

Working Instructions

- mechanical -



Xperia™ Z5 Compact
E5803, E5823

CONTENTS

1	Exterior Views.....	5
1.1	E5803, E5823	5
2	Tools	6
3	Disassembly.....	8
3.1	SIM Tray	8
3.2	Panel Back.....	9
3.3	Label Tray	10
3.4	Ant Main Flex Gina	10
3.5	Cover Rear Sub Assy.....	10
3.6	Speaker holder assy	12
3.7	Main Camera.....	13
3.8	Chat Camera.....	14
3.9	Carrier Holder Key	14
3.10	Front Assy	14
3.11	Battery.....	17
3.12	FPC Assembly JK	18
3.13	FPC Assembly Flash.....	19
3.14	FPC Assembly Bottom & Main PBA.....	19
4	Replacement	21
4.1	SIM Tray	21
4.2	Panel Back.....	21
4.3	Ant Main Flex Gina	21
4.4	Cover Rear Sub Assy.....	21
4.5	Speaker holder assy	22
4.6	Main Camera.....	22
4.7	Carrier Holder Key	22
4.8	Sheet ZIF Connector	22
4.9	Foil Adhesive Double Side Battery	23
4.10	Sheet Insulative DTV Tuner	23
4.11	FPC Assembly Flash.....	23
4.12	Adhesive Double Side FP Sensor	24
4.13	Adhesive Double Side Ring FP Sensor	25
4.14	Battery.....	26
4.15	Cap SIM/SD.....	27
4.16	Carrier Holder Chat Camera	29
4.17	Carrier Holder Strap Black.....	30
4.18	Cushion 0.0 mmSpeaker Bottom	32
4.19	Cushion ACO Spacer JK FPC	33

SONY

Working Instruction Repair Instruction Mechanical/E58/

4.20 Chat Camera	34
4.21 Fingerprint sensor assy.....	35
4.22 Foil Adhesive Double Side 0.0 mmFlash FP	39
4.23 Foil Adhesive Double Side ZIF Connector	40
4.24 Foil Adhesive Key FPC	41
4.25 Foil Adhesive Proximity Sensor.....	42
4.26 Foil Adhesive RF Conductive Key FPC Bottom	43
4.27 Foil Adhesive RF Conductive Key FPC Top.....	44
4.28 Foil Adhesive Vib	45
4.29 Foil Adhesive WR Panel Back.....	46
4.30 FPC Assembly Bottom.....	48
4.31 FPC Assembly JK	49
4.32 FPC Assembly Key	50
4.33 FPC Assembly NFC antenna & Carrier Holder NFC Antenna.....	56
4.34 FPC Assembly USB & Carrier Holder Guide USB Black	59
4.35 Front Assy	61
4.36 Holder Vibrator	62
4.37 Key Camera	63
4.38 Key Volume	65
4.39 Liquid indicator	67
4.40 Loudspeaker + Ear Speaker 16.0 Rectangular & Foil WR Speaker.....	68
4.41 Mic Sub Assy.....	70
4.42 Ring FP Sensor	72
4.43 Sheet ANT Spacer JK FPC.....	73
4.44 Sheet Insulative NFC.....	74
4.45 Sheet Main PBA Bottom	75
4.46 Sheet SIM.....	76
4.47 Sheet WR Mic	77
4.48 Sheet WR Test.....	79
4.49 Tray Label	80
4.50 WR Key Camera Sub Assy	81
4.51 WR Key Volume Sub Assy.....	82
4.52 Label 0.0 mm x 0.0 mm	83
4.53 Board Swap – Replacement	85
4.54 Board Swap – Change Label	85
4.55 Board Swap – Customize of Software	85
5 Reassembly.....	86
5.1 Main PBA Assy & FPC Assembly Bottom	86
5.2 FPC Assembly Flash.....	87
5.3 FPC Assembly JK	88

State: Released Rev 2

© Sony Mobile Communications AB – Company Internal

3(105)

SONY

Working Instruction Repair Instruction Mechanical/E58/

5.4	Front Assy	90
5.5	Carrier Holder Key	95
5.6	Battery.....	95
5.7	Chat Camera.....	97
5.8	Main Camera.....	97
5.9	Speaker holder Assy.....	98
5.10	Cover Rear Sub Assy.....	98
5.11	Ant Main Flex Gina.....	101
5.12	Label Tray	101
5.13	Panel Back.....	103
5.14	SIM Tray	104
6	Revision History	105

***For general information about mechanical repair related issues, refer to
1220-1333: Generic Repair Manual - mechanical***

1 Exterior Views

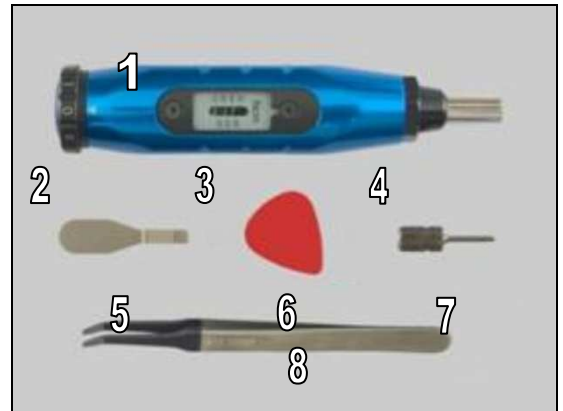
1.1 E5803, E5823



2 Tools

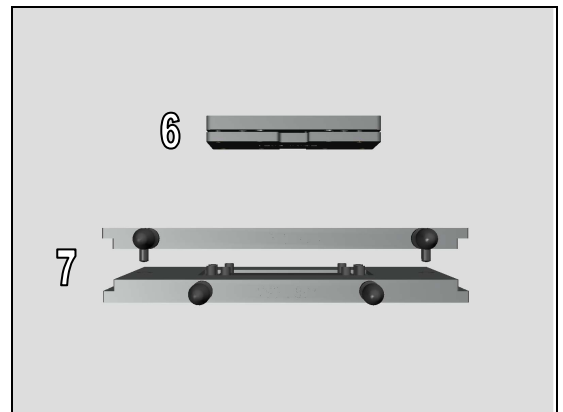
SPECIAL TOOLS

1. Torque Screwdriver
2. Flex Film Assembly Tool
3. Bits JCIS No.0
4. Front Opening Tool
5. Guitar Pick

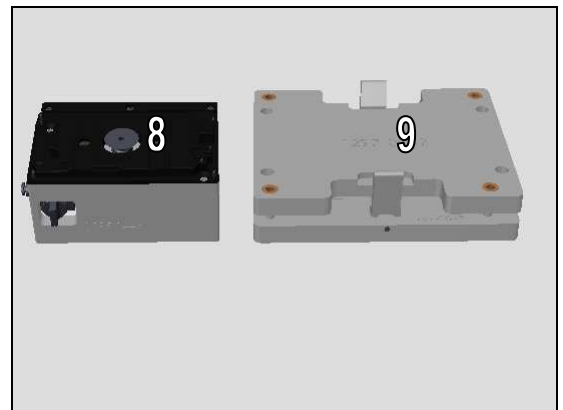


For part no's on the tools above, refer to the 'Tools Catalogue/Matrix'!

6. Back Panel Adhesive Alignment Fixture
7. Back Panel Press Top /Bottom Inlay



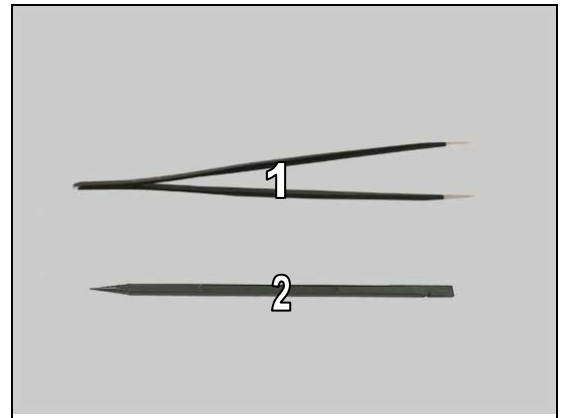
8. PBA Assembly Fixture
9. Battery Press Fixture



Tools

STANDARD TOOLS

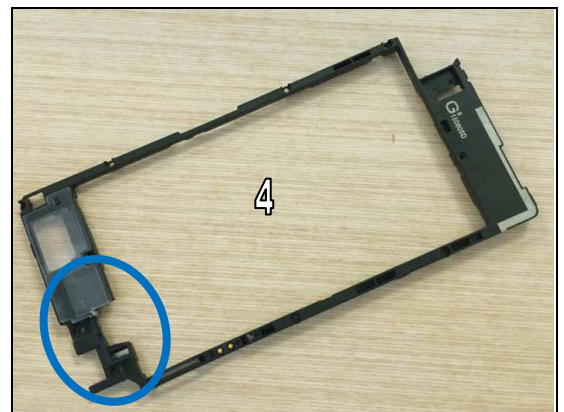
1. Tweezers
2. Nylon Pointer



3. Suction cup



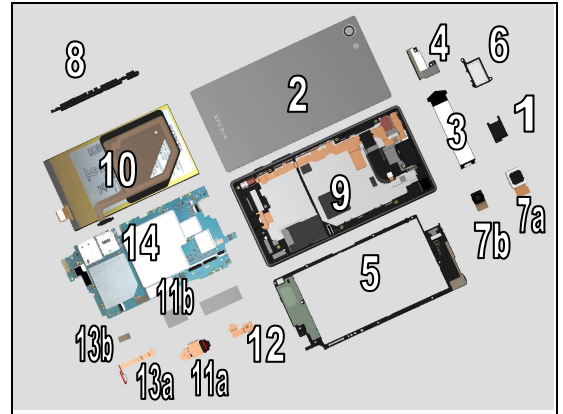
4. Cover Rear Sub Assy Tool
(Make it yourself by cutting with a knife on the Battery Connector area as shown)



3 Disassembly

The disassembly is done in the following order:

1. SIM Tray
2. Panel Back
3. Label Tray
4. Ant Main Flex Gina
5. Cover Rear Sub Assy
6. Speaker holder assy
7. Main Camera (a) & Chat Camera (b)
8. Carrier Holder Key
9. Front Assy
10. Battery Assy
11. FPC Assembly JK (a) & Sheet Insulative DTV Tuner (b)
12. FPC Assembly Flash
13. FPC Assembly Bottom (a) & Sheet Insulative NFC (b)
14. Main PBA Assy

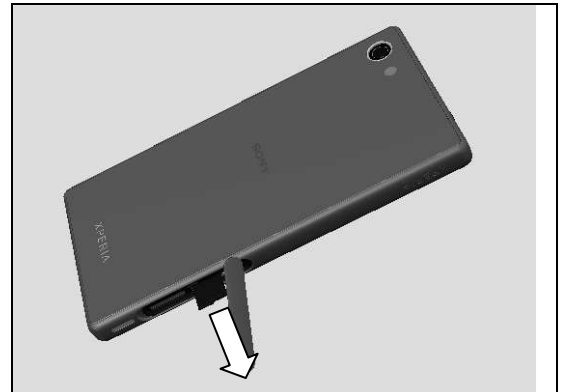


3.1 SIM Tray

Open the Cap SIM/SD.



Remove the SIM Tray with fingers.



Close the Cap SIM/SD as sequence below:

1. Center
2. Bottom side
3. Top Side



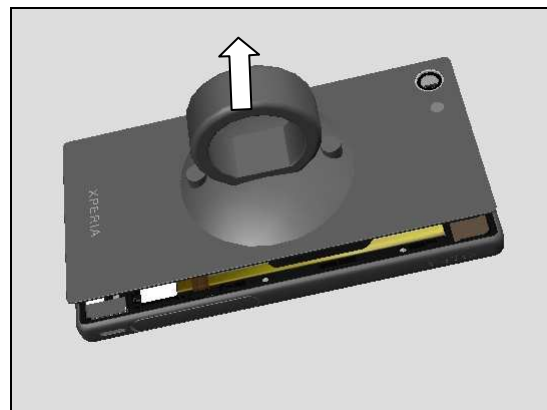
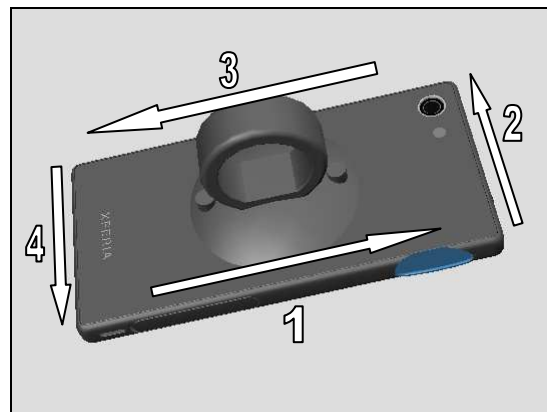
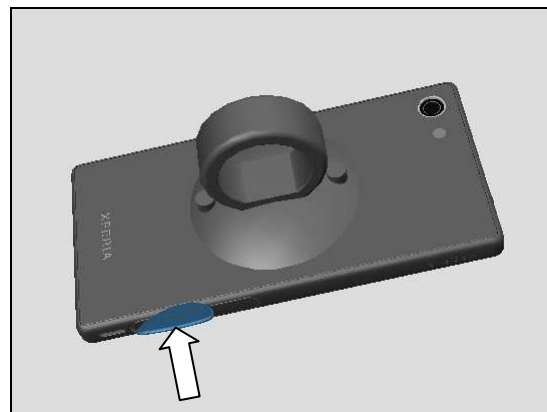
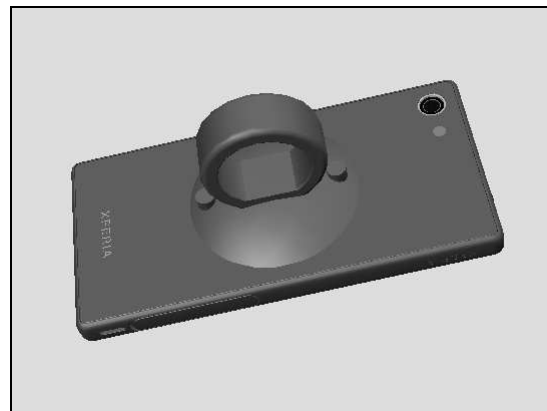
3.2 Panel Back

Use Suction Cup to get space for inserting the Guitar Pick.

Insert the Guitar Pick as shown position.

Gently slide along to as sequence shown in the picture to release all sides of the Panel Back.

Remove the Panel Back by using the Suction cup.



3.3 Label Tray

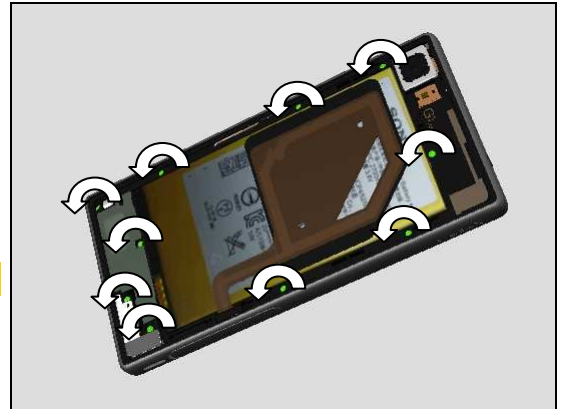
Remove the Label Tray gently with fingers.



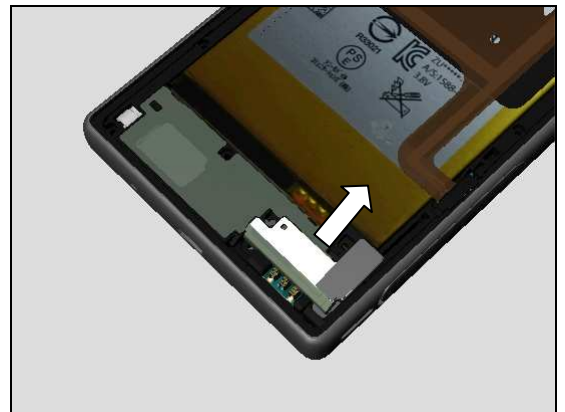
3.4 Ant Main Flex Gina

Remove ten Screws by using a screwdriver with Bits (JCIS No 0).

Scrap! Do not reuse!



Remove the Ant Main Flex Gina gently with fingers.



3.5 Cover Rear Sub Assy

There are two hooks securing the NFC connector.



Disassembly

Insert the head of plastic tweezers as shown position.



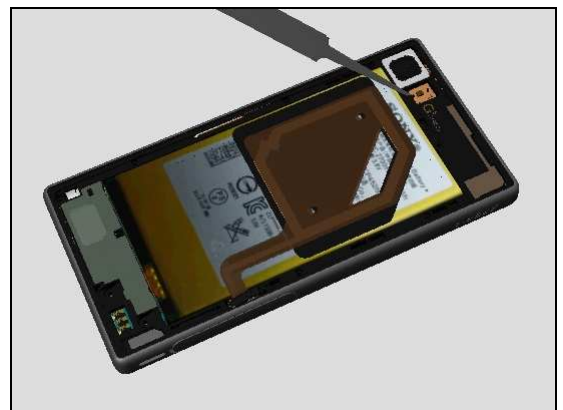
Push as shown direction to release the hook on this side.



Pull the other side of the connector to release it from the Cover Rear Sub Assy.



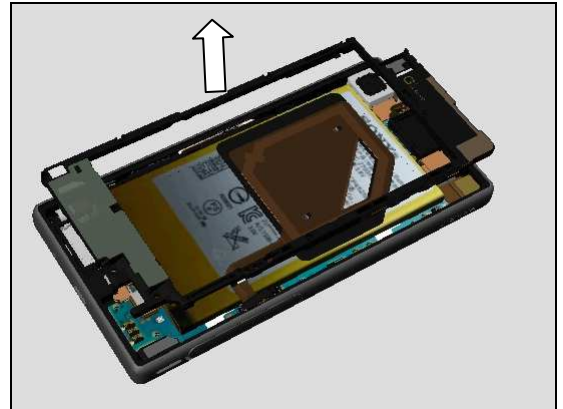
Insert the plastic tweezers as shown position.



Detach to release the Flash FPC from the adhesive on the back side.



Remove the Cover Rear Sub Assy gently from the top side.

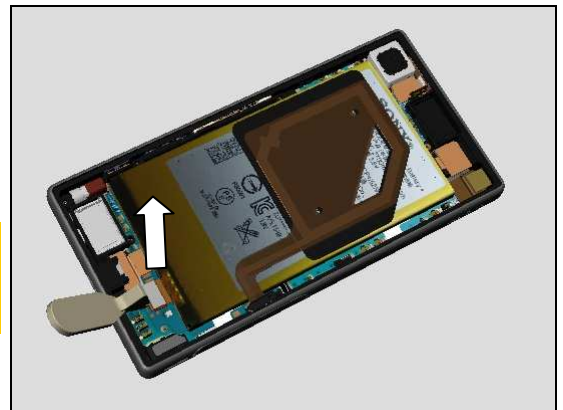


3.6 Speaker holder assy

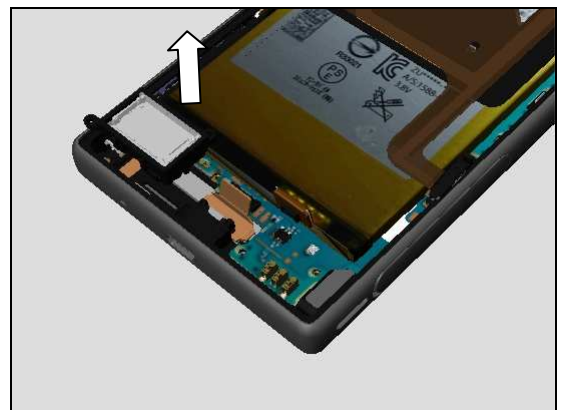
Disconnect the BtB connectors by using the Front Opening Tool as shown sequence.

Be careful with small components around the BtB connectors!

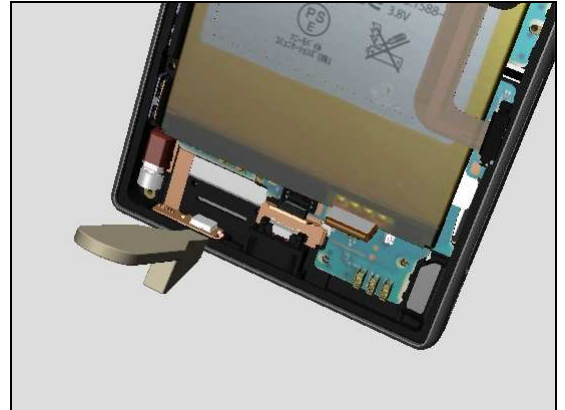
Do not touch the Battery!



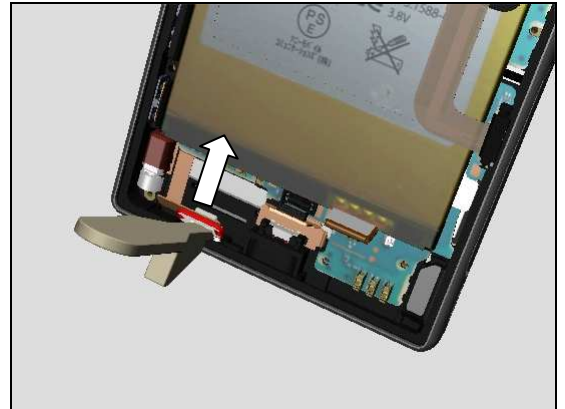
Remove the Speaker holder assy from its cavity with fingers.



Insert the Front Opening Tool into the 1st Mic cavity.



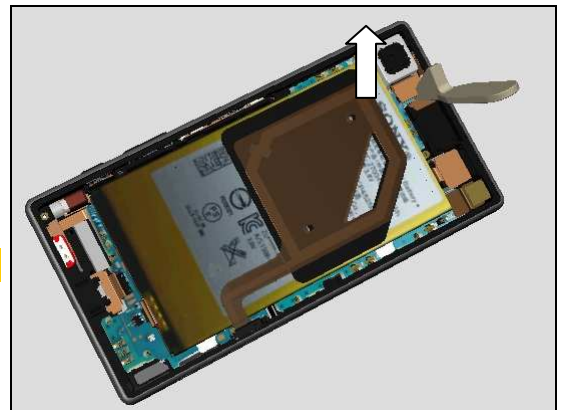
Push to release the 1st Mic from its cavity gently.



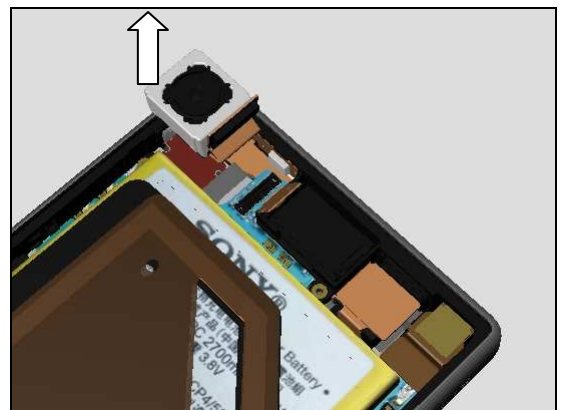
3.7 Main Camera

Disconnect the connector of the Main Camera.

Do not damage components on the Main PBA!



Remove the Main Camera with fingers gently.

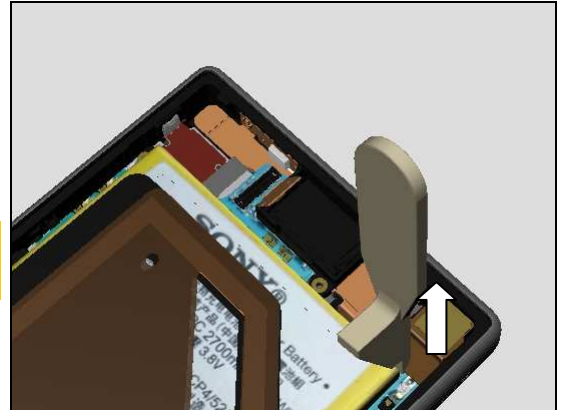


3.8 Chat Camera

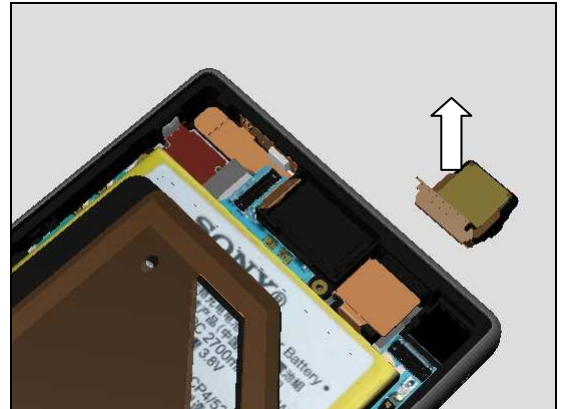
Disconnect the connector of the Chat Camera.

Do not damage components on the Main PBA!

Do not touch the Battery!

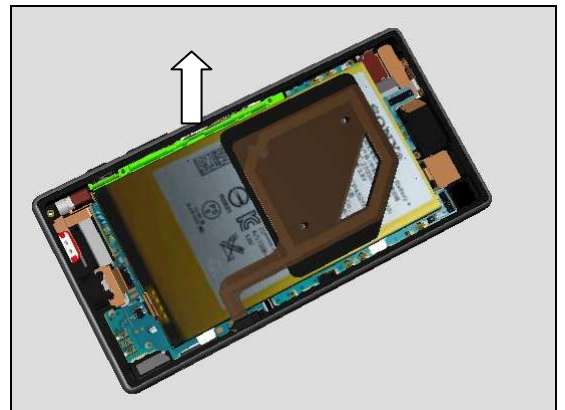


Remove the Chat Camera with fingers gently.



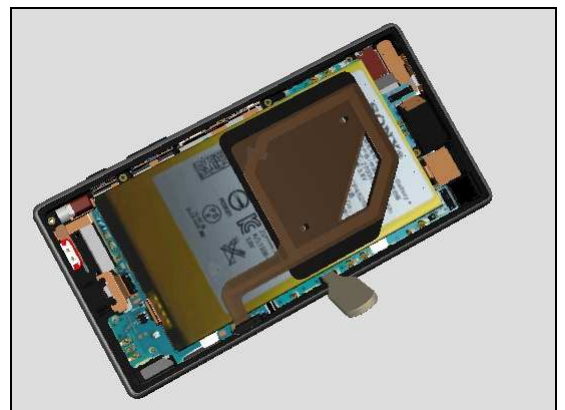
3.9 Carrier Holder Key

Release to remove the Carrier Holder Key from the cavity as shown.



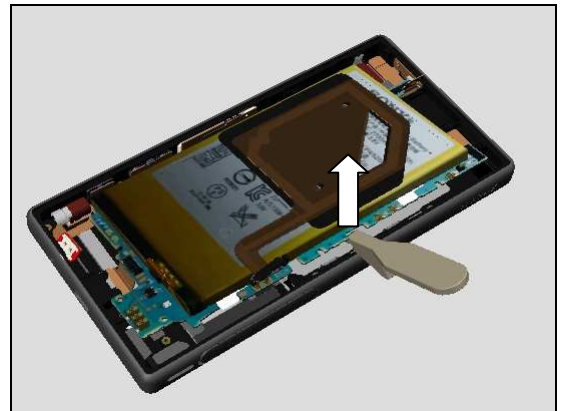
3.10 Front Assy

Insert the Front Opening Tool as shown position.



Disassembly

Pull upwards to release the snap hooks securing the right side of Main PBA



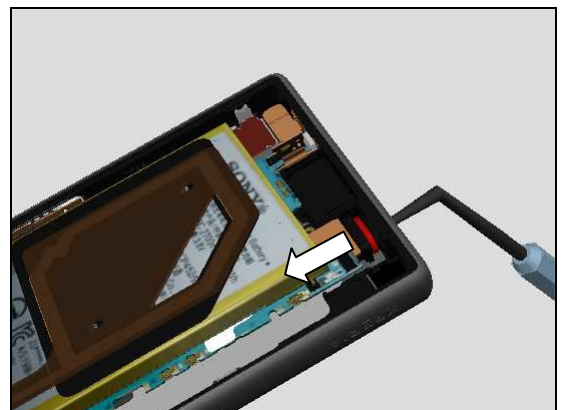
Hold the Main PBA Assy at approximate 15°



Insert the Nylon Pointer into the Audio Jack hole as shown.

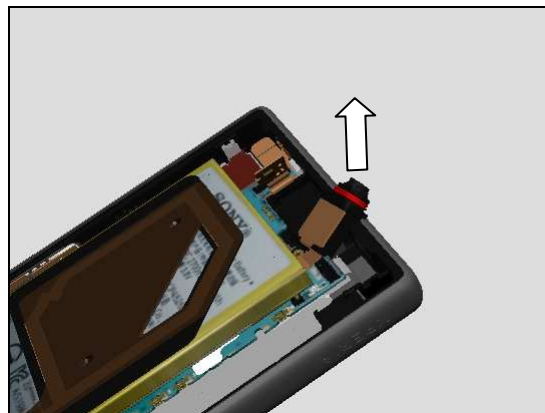


Push to release the Audio Jack head from the hole.

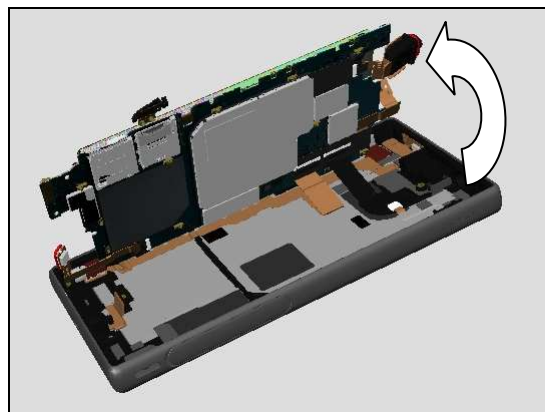


Disassembly

Release the Audio Jack from the Audio Jack hole of the Front Assy.

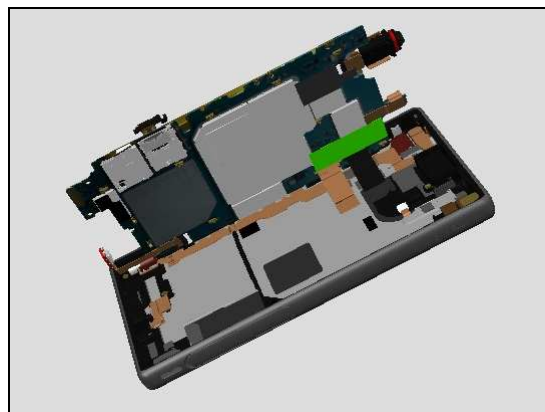


Rotate the Mai PBA Assy as shown direction to approximate 75°.

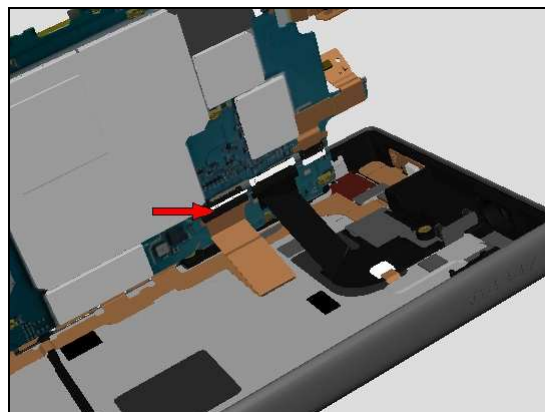


Detach to remove Sheet ZIF Connector.

Scrap! Do not reuse!

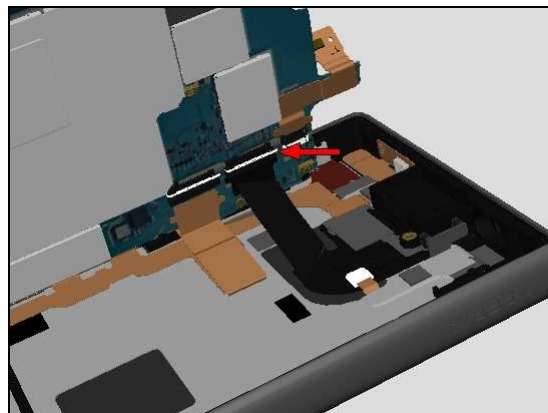


Unlock and disconnect the ZIF connector of FPC Assembly Key.

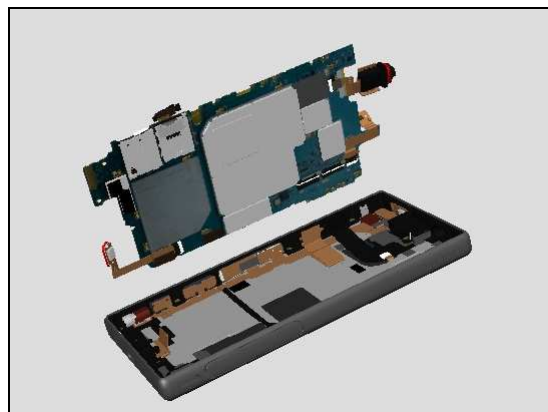


Disassembly

Do the same for ZIF connector of Display.



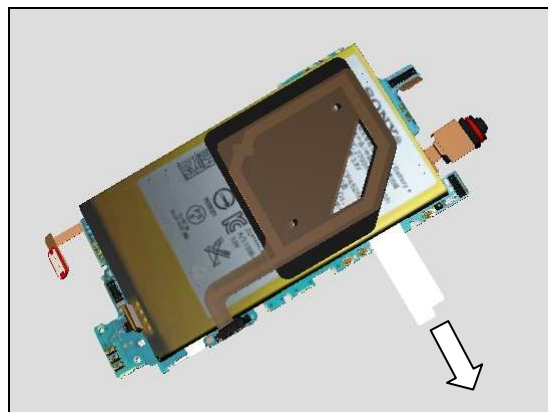
Remove the Front Assy.



3.11 Battery

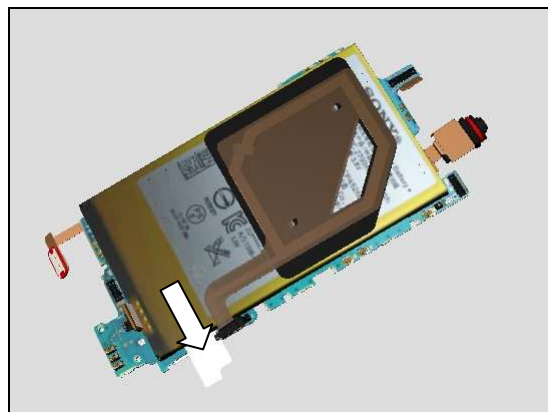
Capture the Foil Adhesive Double Side Battery and pull out the tab horizontally until you removed it completely.

Scrap! Do not reuse!



Do the same of the other Foil Adhesive Double Side Battery.

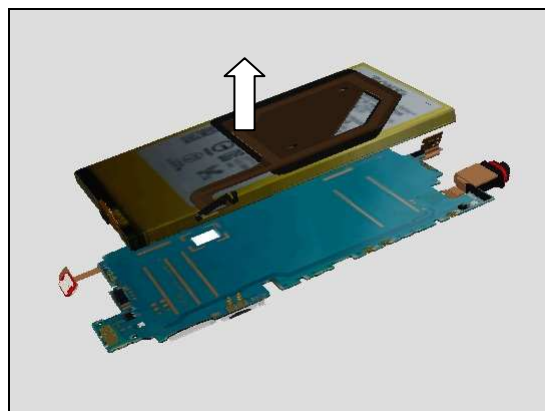
Scrap! Do not reuse!



Disassembly

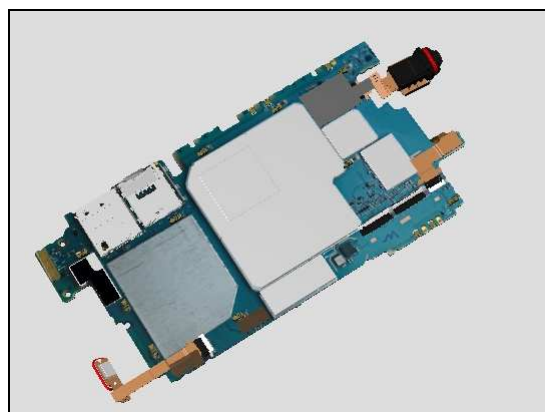
Remove the Battery gently.

Scrap! Battery cannot be reused!



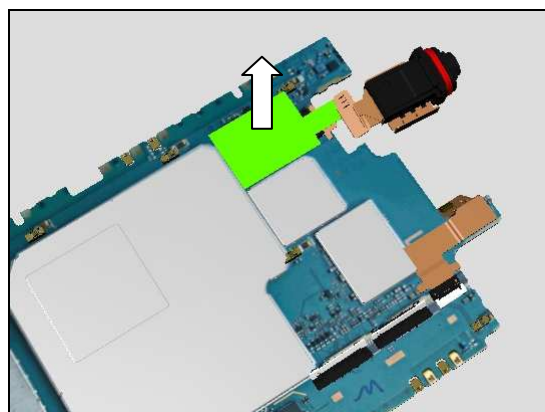
3.12 FPC Assembly JK

Turn the Main PBA Assy over.

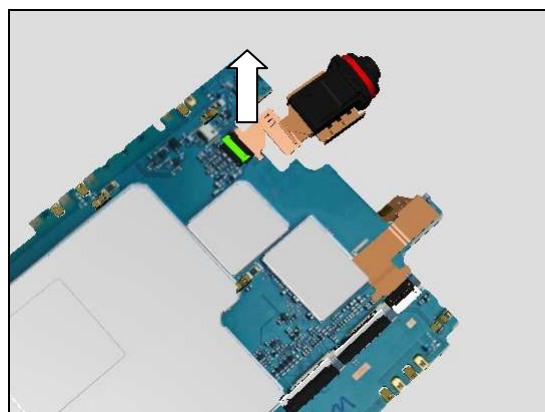


Detach to remove the Sheet Insulative DTV Tuner.

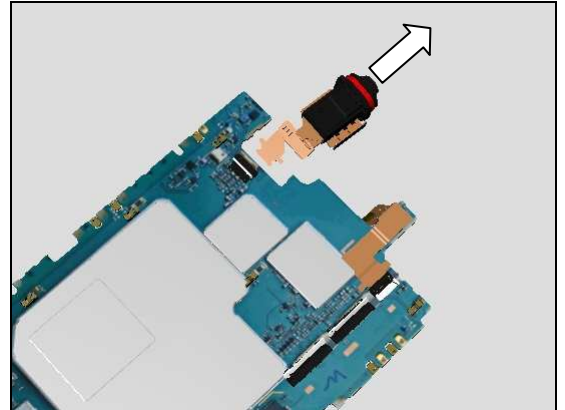
Scrap! Do not reuse!



Unlock and disconnect the ZIF connector of FPC Assembly JK.

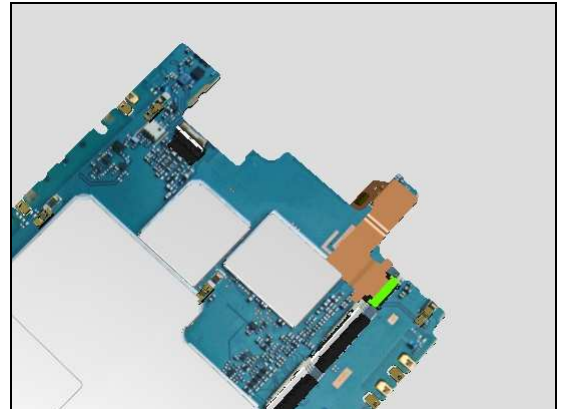


Remove the FPC Assembly JK.

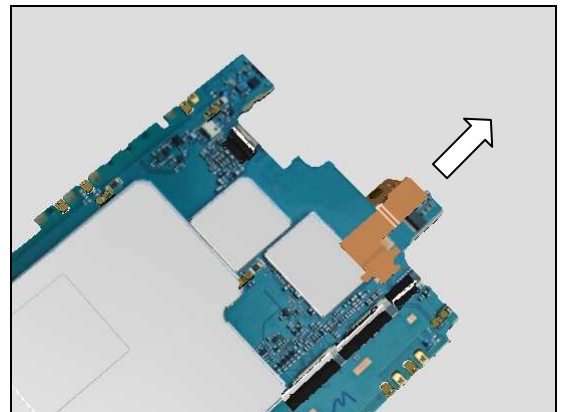


3.13 FPC Assembly Flash

Unlock and disconnect the ZIF connector of FPC Assembly Flash



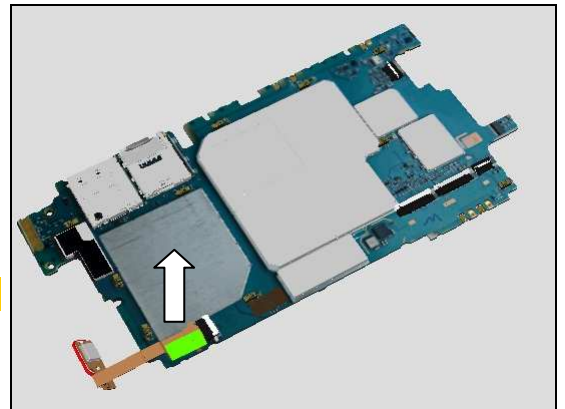
Remove the FPC Assembly Flash.



3.14 FPC Assembly Bottom & Main PBA

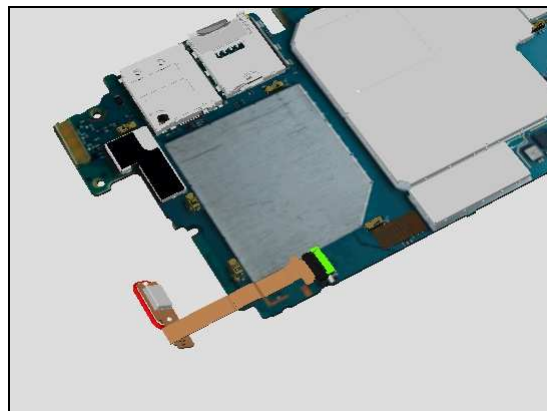
Detach to remove the Sheet Insulative NFC.

Scrap! Do not reuse!

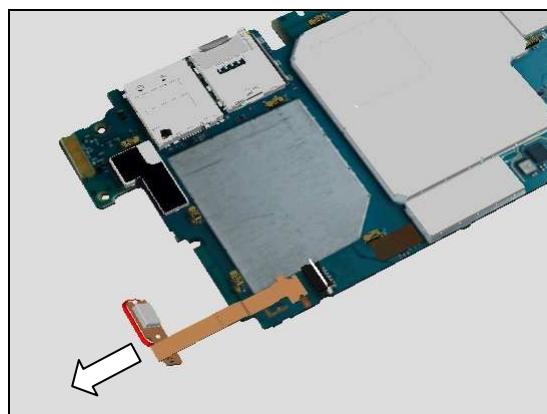


Disassembly

Unlock and disconnect the ZIF connector of FPC Assembly Bottom



Remove the FPC Assembly Bottom.



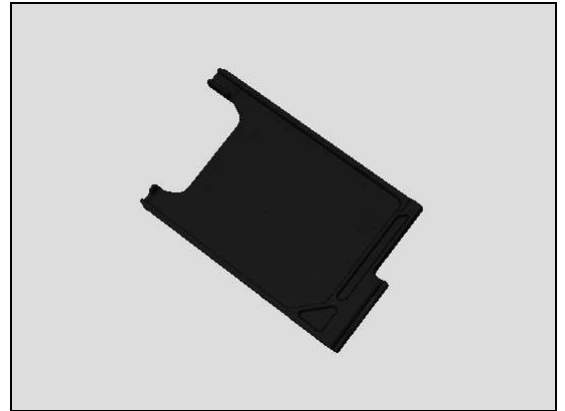
4 Replacement

4.1 SIM Tray

Follow the 3.1 Disassembly instructions!

Prepare the new SIM Tray.

Follow the 5.14 Reassembly instructions!



4.2 Panel Back

Follow the 3.1 – 3.2 Disassembly instructions!

Prepare the new Panel Back.

Follow the 5.13 – 5.14 Reassembly instructions!



4.3 Ant Main Flex Gina

Follow the 3.1 – 3.4 Disassembly instructions!

Prepare the new Ant Main Flex Gina.

Follow the 5.11 – 5.14 Reassembly instructions!

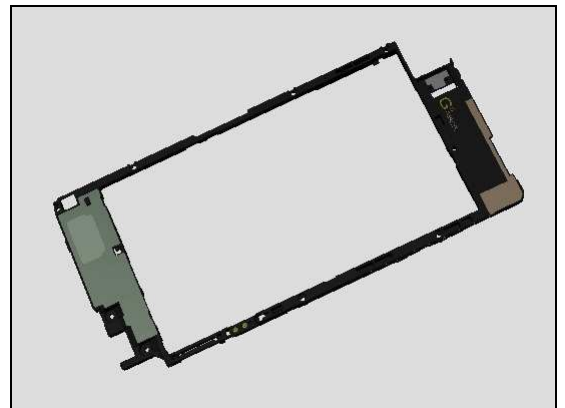


4.4 Cover Rear Sub Assy

Follow the 3.1 – 3.5 Disassembly instructions!

Prepare the new Cover Rear Sub Assy.

Follow the 5.10 – 5.14 Reassembly instructions!



4.5 Speaker holder assy

Follow the 3.1 – 3.6 Disassembly instructions!

Prepare the new Speaker holder assy.

Follow the 5.9 – 5.14 Reassembly instructions!

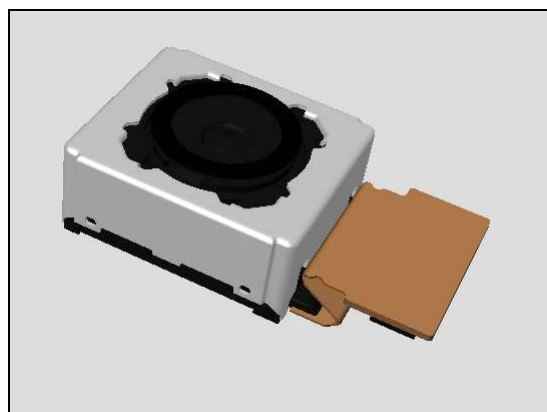


4.6 Main Camera

Follow the 3.1 – 3.7 Disassembly instructions!

Prepare the new Part #7.

Follow the 5.8 – 5.14 Reassembly instructions!

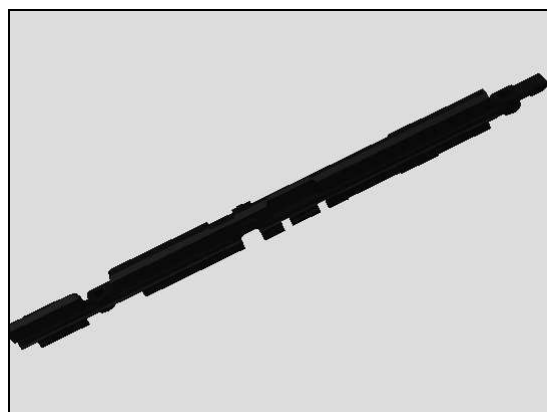


4.7 Carrier Holder Key

Follow the 3.1 – 3.5, 3.9 Disassembly instructions!

Prepare the new Carrier Holder Key.

Follow the 5.5, 5.10 – 5.14 Reassembly instructions!

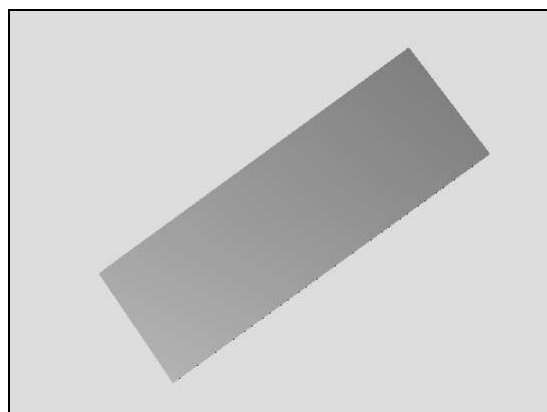


4.8 Sheet ZIF Connector

Follow the 3.1 – 3.9 Disassembly instructions!

Prepare the new Sheet ZIF Connector.

Follow the 5.4 – 5.14 Reassembly instructions!

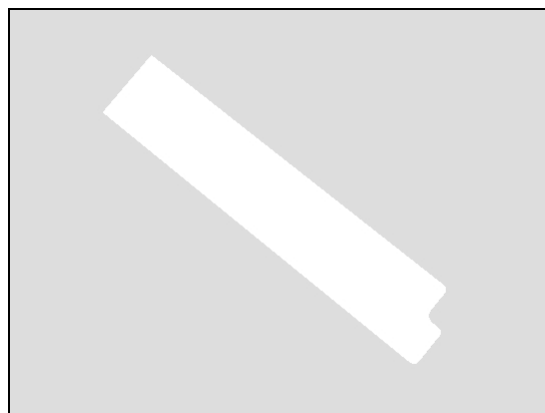


4.9 Foil Adhesive Double Side Battery

Follow the 3.1 – 3.11 Disassembly instructions!

Prepare the new Foil Adhesive Double Side Battery.

Follow the 5.4 – 5.14Y Reassembly instructions!

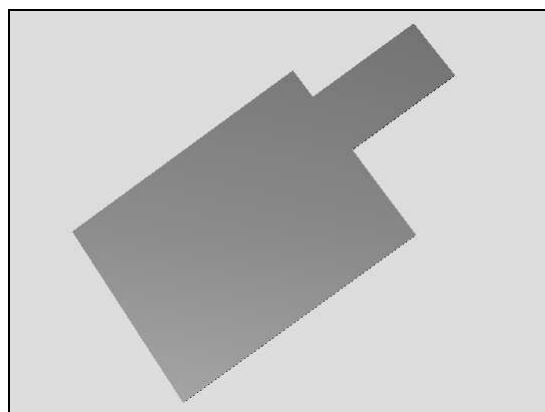


4.10 Sheet Insulative DTV Tuner

Follow the 3.1 – 3.12 Disassembly instructions!

Prepare the new Sheet Insulative DTV Tuner.

Follow the 5.3 – 5.14 Reassembly instructions!

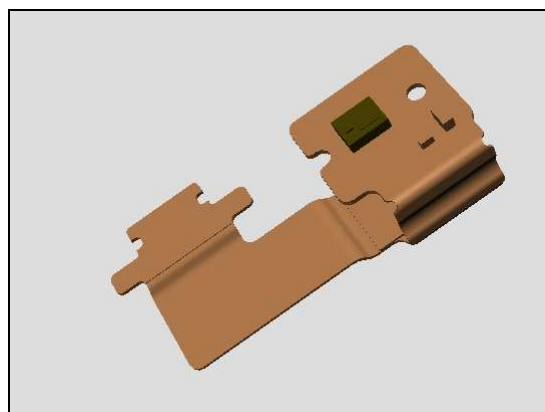


4.11 FPC Assembly Flash

Follow the 3.1 – 3.13 Disassembly instructions!

Prepare the new FPC Assembly Flash.

Follow the 5.2 – 5.14 Reassembly instructions!



Replacement

4.12 Adhesive Double Side FP Sensor

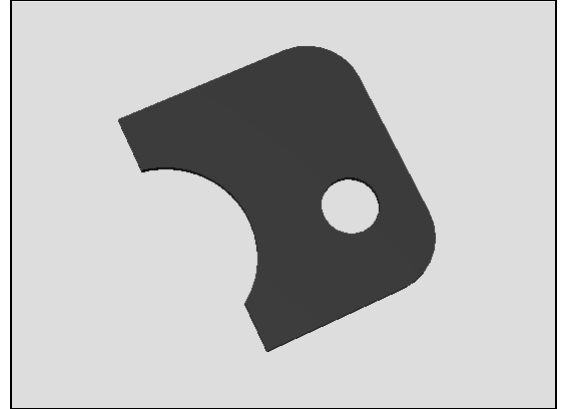
Follow the 3.1 – 3.10 Disassembly instructions!

Follow the 4.21 Removal instructions!

Prepare the new Adhesive Double Side FP Sensor.

Follow the 4.21 Installation instructions!

Follow the 5.4 – 5.14 Reassembly instructions!



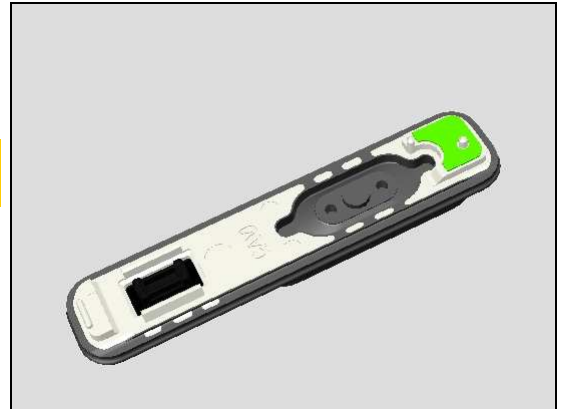
REMOVAL

Detach to remove it from the Fingerprint sensor assy.

Make sure all remaining adhesive residue have been removed!

INSTALLATION

Attach a new Adhesive Double Side FP Sensor using guiding poles of the Fingerprint sensor assy and press along to make it securely attached.



Replacement

4.13 Adhesive Double Side Ring FP Sensor

Follow the 3.1 – 3.10 Disassembly instructions!

Follow the 4.21 Removal instructions!

Prepare the new Adhesive Double Side Ring FP Sensor.

Follow the 4.21 Installation instructions!

Follow the 5.4 – 5.14 Reassembly instructions!

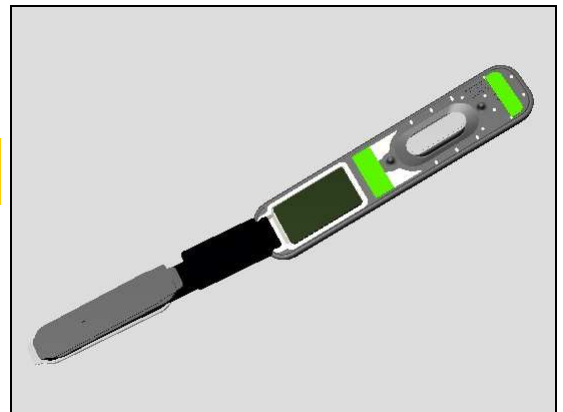
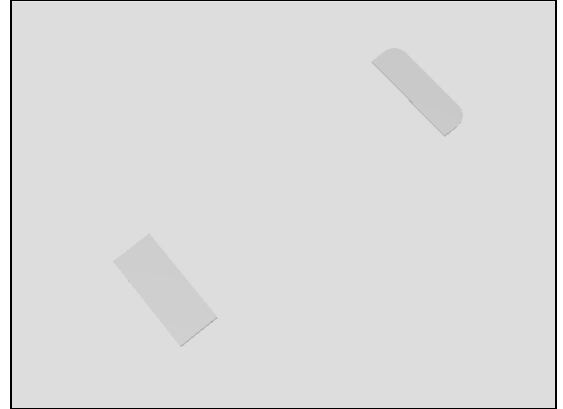
REMOVAL

Detach to remove each piece from the Fingerprint sensor Assy.

Make sure all remaining adhesive residue have been removed!

INSTALLATION

Attach a new Adhesive Double Side Ring FP Sensor using two guiding poles of the Fingerprint sensor Assy and press along to make it securely attached.



Replacement

4.14 Battery

Follow the 3.1 – 3.11 Disassembly instructions!

Follow the 4.33 Removal instructions!

Prepare the new Battery.

Follow the 4.33 Installation instructions!

Follow the 5.4 – 5.14 Reassembly instructions!



Replacement

4.15 Cap SIM/SD

Prepare the new Cap SIM/SD.

REMOVAL

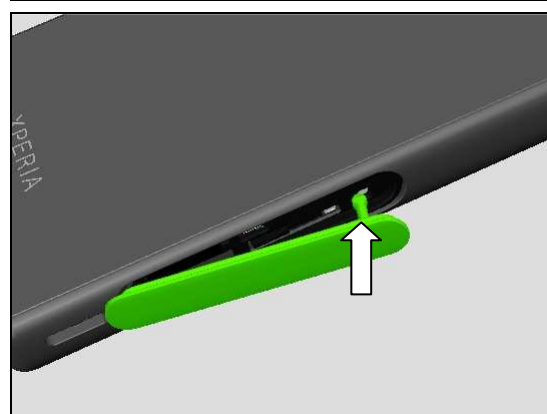
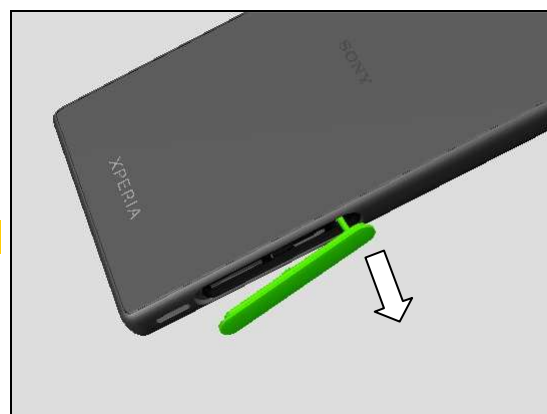
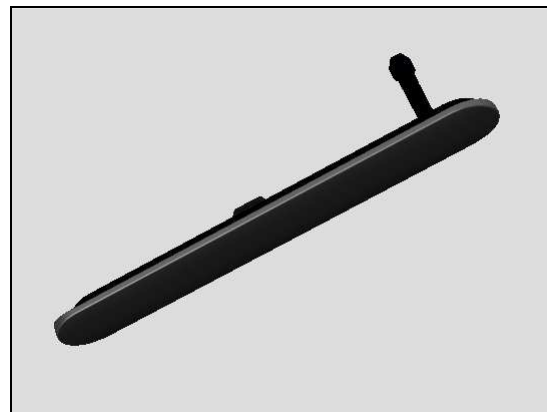
Open the Cap SIM/SD.

Pull out the Cap SIM/SD as shown in picture.

Check if the head is fully pulled out!

INSTALLATION

Insert the new Cap SIM/SD into its hole as shown angle in picture.



Replacement: Cap SIM/SD

Close the Cap SIM/SD as sequence below:

1. Center
2. Bottom side
3. Top Side!



Replacement

4.16 Carrier Holder Chat Camera

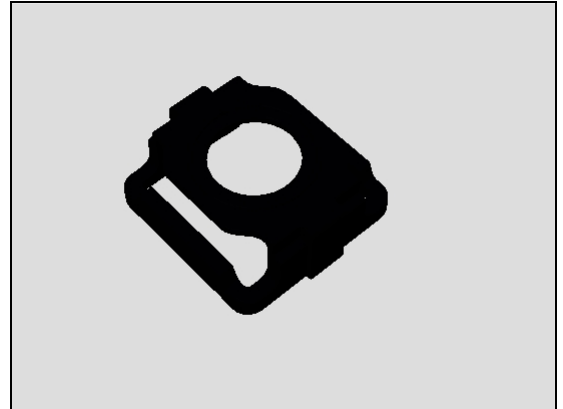
Follow the 3.1 – 3.5, 3.8 Disassembly instructions!
Prepare the new Carrier Holder Chat Camera.
Follow the 5.7, 5.10 – 5.14 Reassembly instructions!

REMOVAL

Remove it gently from Chat Camera.

INSTALLATION

Place a new Carrier Holder Chat Camera to snap the Chat Camera as shown.



Replacement

4.17 Carrier Holder Strap Black

Follow the 3.1 – 3.10 Disassembly instructions!

Follow the 4.48 Removal instructions!

Prepare the new Carrier Holder Strap Black.

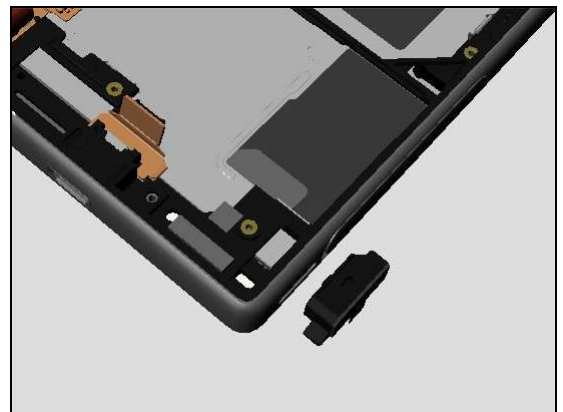
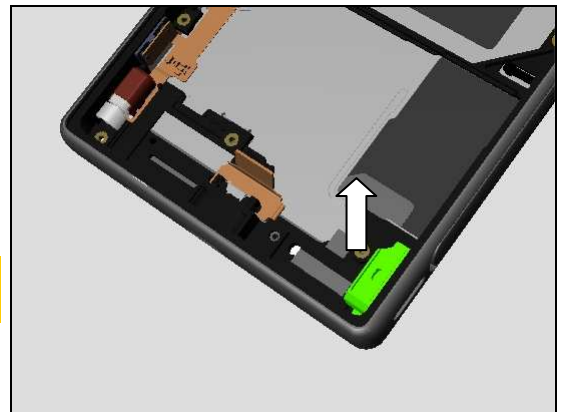
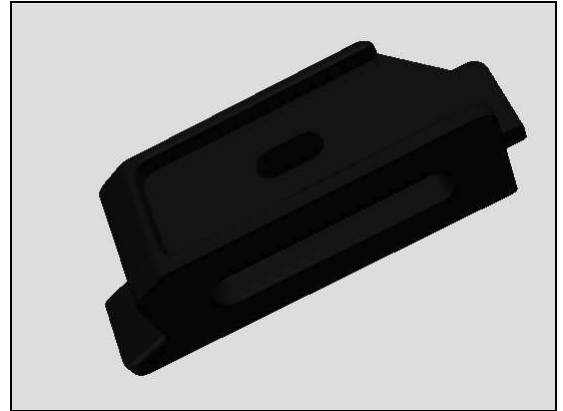
Follow the 4.48 Installation instructions!

Follow the 5.4 – 5.14 Reassembly instructions!

REMOVAL

Insert the Front Opening tool and pull to release the Carrier Holder Strap Black from Front Assy.

Make sure no adhesive residue remains on the Front Assy side before assembly!



INSTALLATION

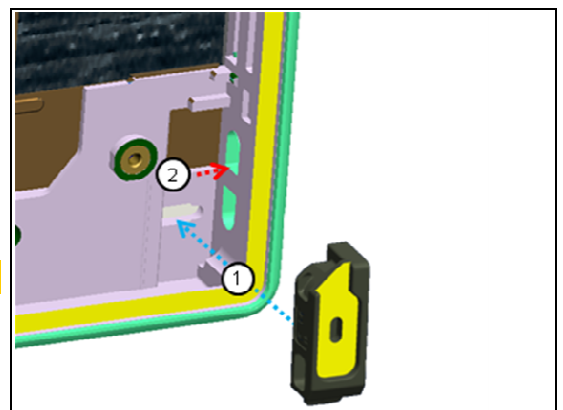
Prepare a new Carrier Holder Strap Black in place with correct direction.

Insert the Carrier Holder Strap Black into the cavity following sequence :

1. Insert the Carrier Holder Strap Black into the cavity with an angle.

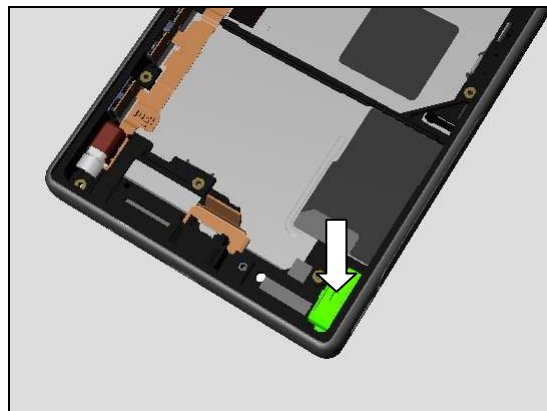
Make sure Carrier Holder Strap Black fit well!

2. Press as ② shown direction.



Replacement: Carrier Holder Strap Black

Press again with flat tip of Nylon pointer for 5 seconds at approximate $50 \pm 5\text{N}$.



Replacement

4.18 Cushion 0.0 mmSpeaker Bottom

Follow the 3.1 – 3.5 Disassembly instructions!

Prepare the new Cushion 0.0 mmSpeaker Bottom.

Follow the 5.10 – 5.4 Reassembly instructions!

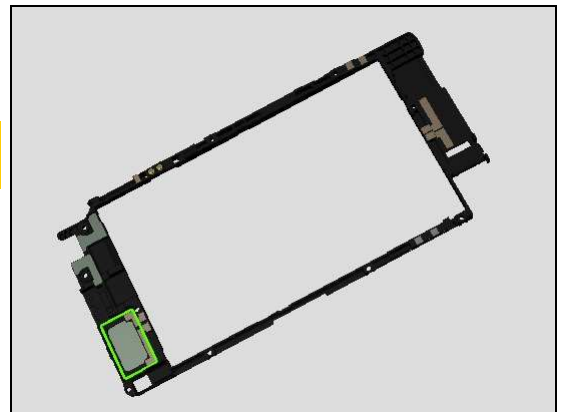
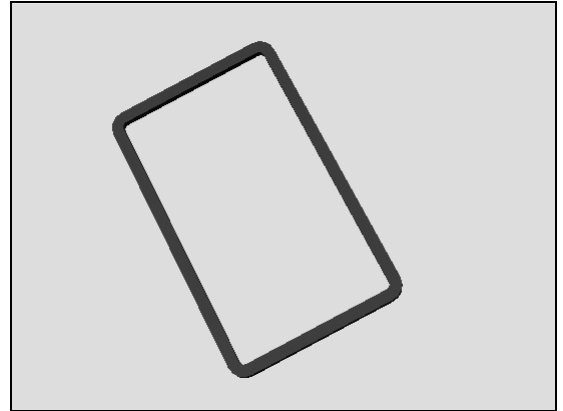
REMOVAL

Detach to remove it from the Cover Rear Sub Assy.

Make sure all remaining adhesive residue have been removed from Cover Rear Sub Assy!

INSTALLATION

Attach a new Cushion 0.0 mmSpeaker Bottom into the Speaker cavity and press along to make it securely attached.



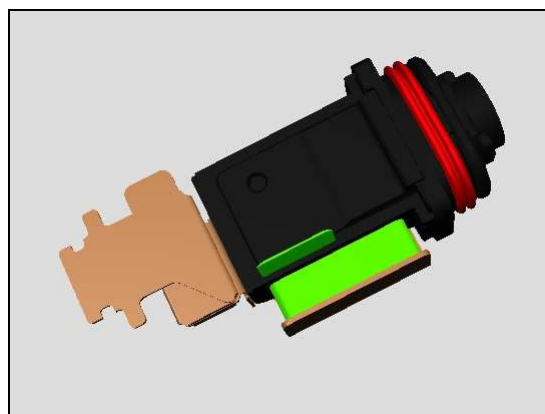
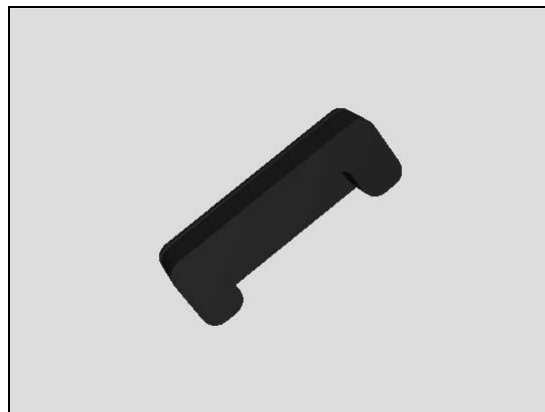
Replacement

4.19 Cushion ACO Spacer JK FPC

Follow the 3.1 – 3.12 Disassembly instructions!
Prepare the new Cushion ACO Spacer JK FPC.
Follow the 5.3 – 5.14 Reassembly instructions!

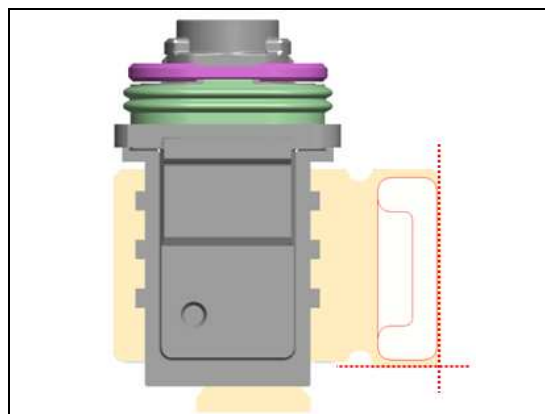
REMOVAL

Detach it gently from the FPC Assembly JK.

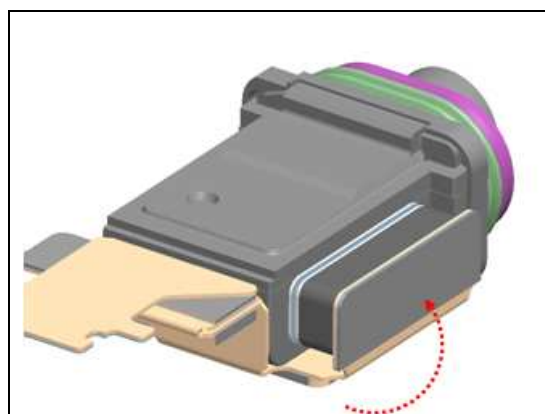


INSTALLATION

Attach a new Cushion ACO Spacer JK FPC as guiding line shown in the picture.



Band and attach the Cushion ACO Spacer JK FPC on the side wall of FPC Assembly JK.



Replacement

4.20 Chat Camera

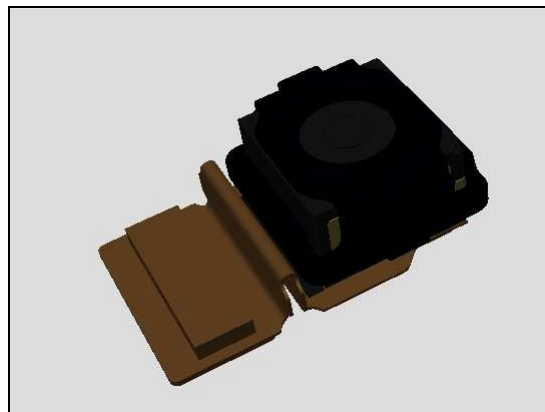
Follow the 3.1 – 3.5, 3.8 Disassembly instructions!

Follow the 4.16 Removal instructions!

Prepare the new Chat Camera.

Follow the 4.16 Installation instructions!

Follow the 5.7, 5.10 – 5.4 Reassembly instructions!



Replacement

4.21 Fingerprint sensor assy

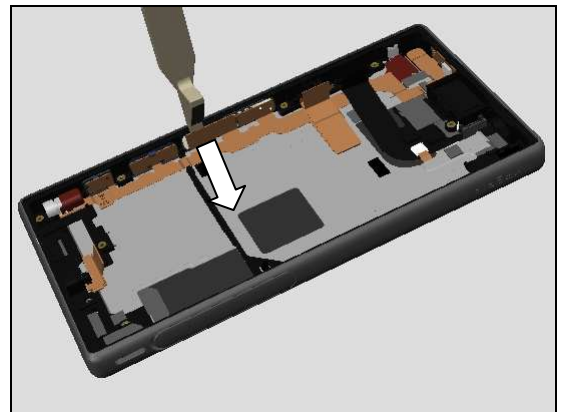
Follow the 3.1 – 3.10 Disassembly instructions!

Prepare the new Fingerprint sensor assy.

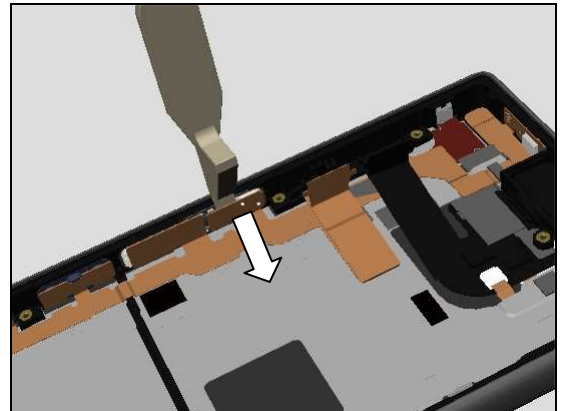
Follow the 5.4 – 5.14 Reassembly instructions!

REMOVAL

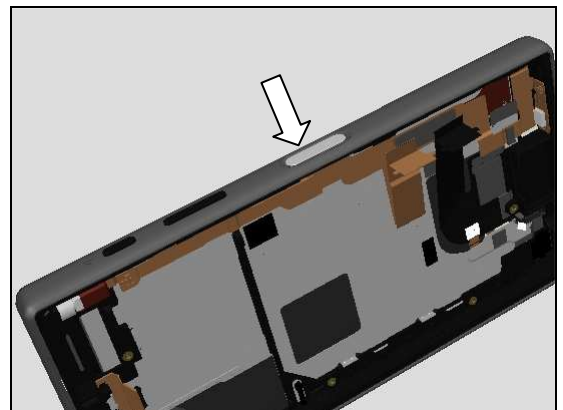
Disconnect the BtB connector using a Front Opening Tool.



Detach to separate the Fingerprint sensor assy from FPC Assembly Key.

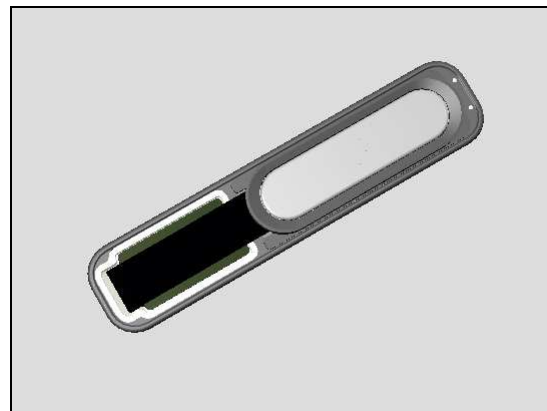


Push from outside to remove the Fingerprint sensor assy off the Front Assy.

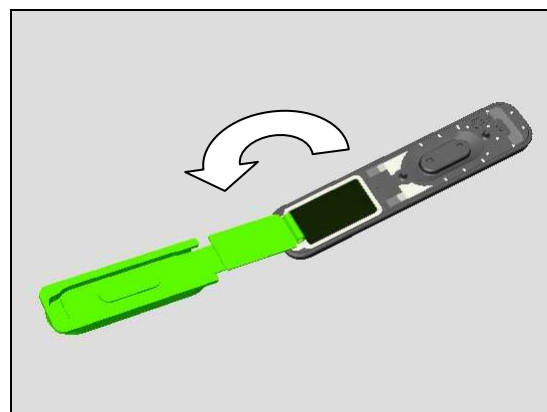


Replacement: Fingerprint sensor assy

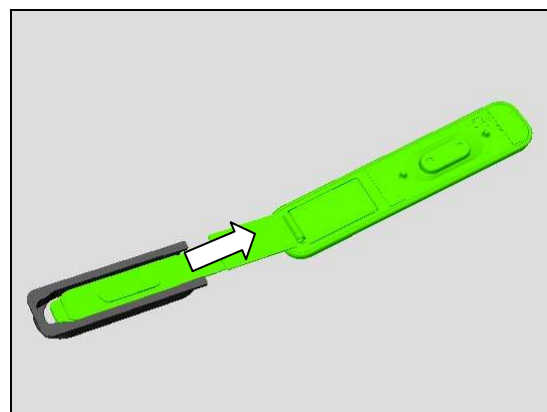
Slide along both sides of the Fingerprint sensor assy.



Rotate the FPC approximate 180° as picture shown.

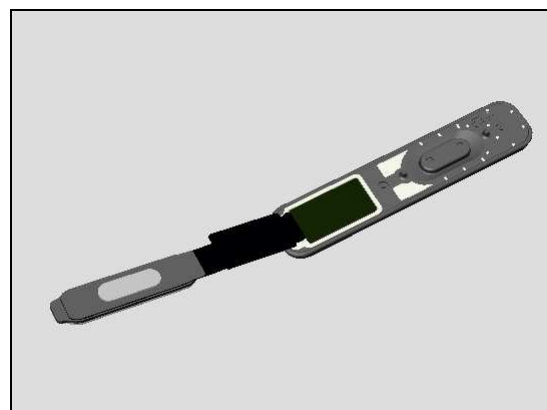


Draw the FPC to unhook it from Ring FP Sensor.



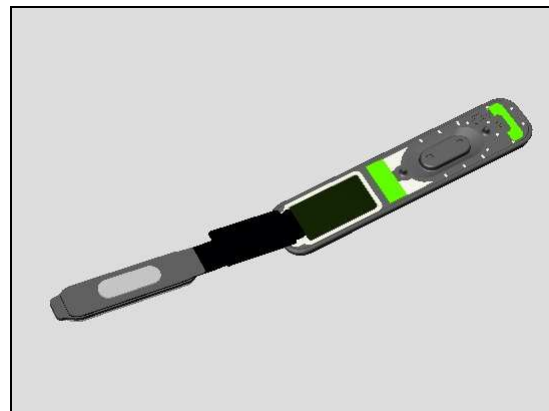
INSTALLATION

Prepare a new Fingerprint sensor assy in place



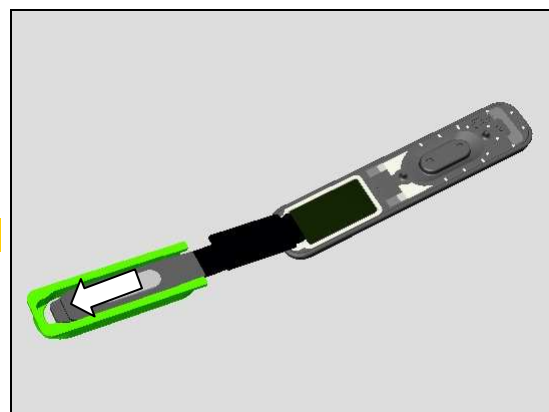
Replacement: Fingerprint sensor assy

Attach a new Adhesive Double Side Ring FP Sensor using two guiding poles of the Fingerprint sensor assy and press along to make it securely attached.

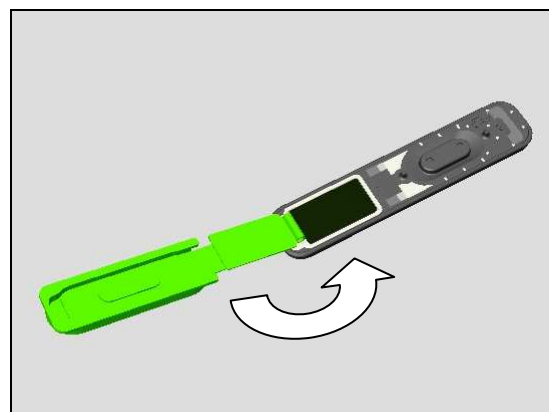


Insert the Key part into the cavity of the Ring FP Sensor.

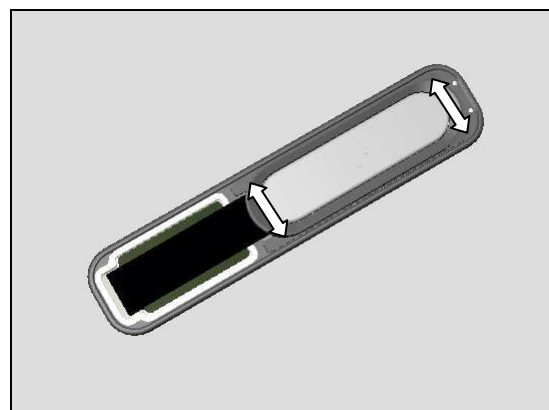
Note the direction of Ring FP Sensor!



Rotate the FPC 180° as picture shown.

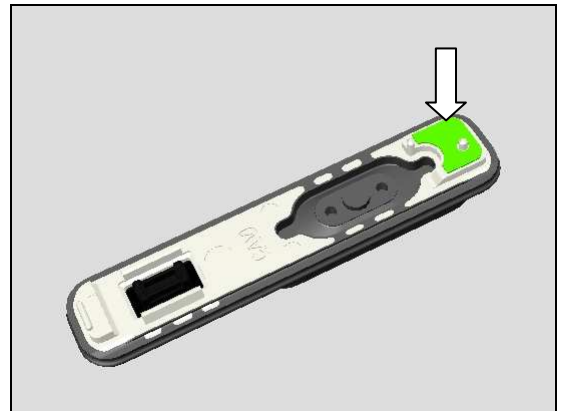


Press long to make sure the Ring FP Sensor's attachment.

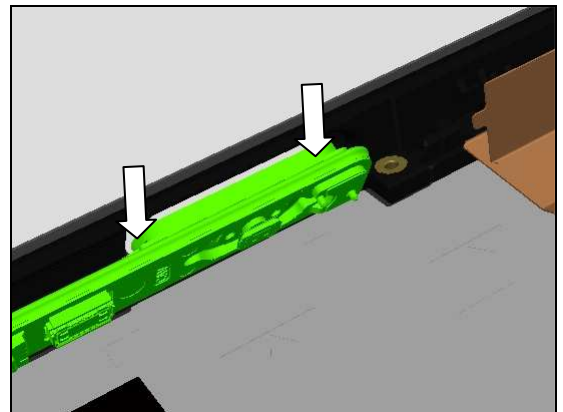


Replacement: Fingerprint sensor assy

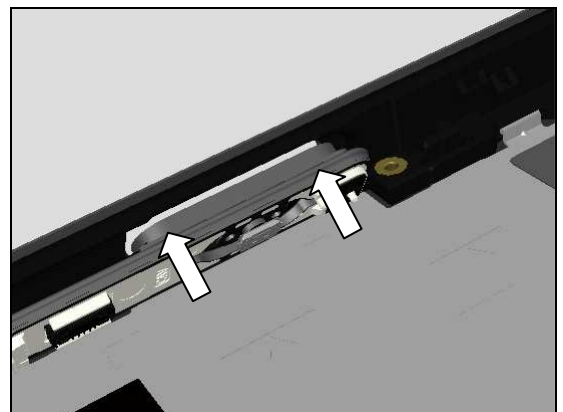
Attach a new Adhesive Double Side FP Sensor using guiding poles of the Fingerprint sensor assy and press along to make it securely attached.



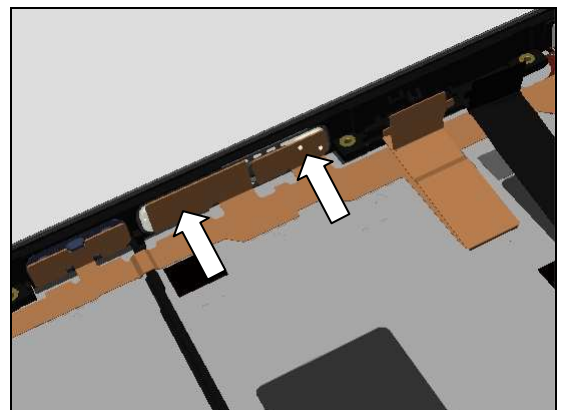
Insert the bottom side of Fingerprint sensor assy into the related cavity of the Front Assy.



Press the upper part into the cavity until the rubber ring is fully inserted!



1. Press to snap the BtB connector.
2. Press to attach the side key FPC using the two guiding poles shown in the picture.



Replacement

4.22 Foil Adhesive Double Side 0.0 mmFlash FP

Follow the 3.1 – 3.5 Disassembly instructions!

Prepare the new Foil Adhesive Double Side 0.0 mmFlash FP.

Follow the 5.9 – 5.14 Reassembly instructions!

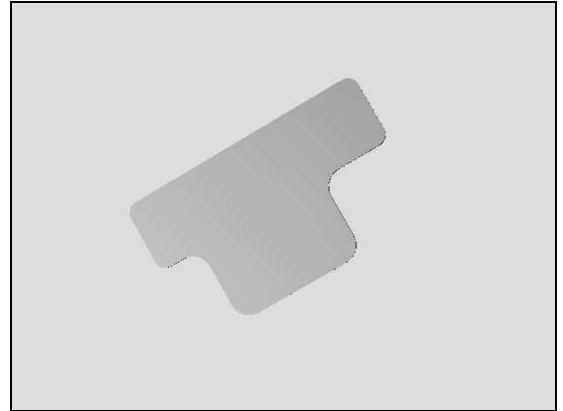
REMOVAL

Detach to remove it from the Cover Rear Sub Assy.

Make sure all remaining adhesive residue have been removed from Cover Rear Sub Assy!

INSTALLATION

Attach a new Foil Adhesive Double Side 0.0 mmFlash FP using the guiding pole of the Cover Rear Sub Assy and press along to make it securely attached.



Replacement

4.23 Foil Adhesive Double Side ZIF Connector

Follow the 3.1 – 3.14 Disassembly instructions!

Prepare the new Foil Adhesive Double Side ZIF Connector.

Follow the 5.1 – 5.14 Reassembly instructions!

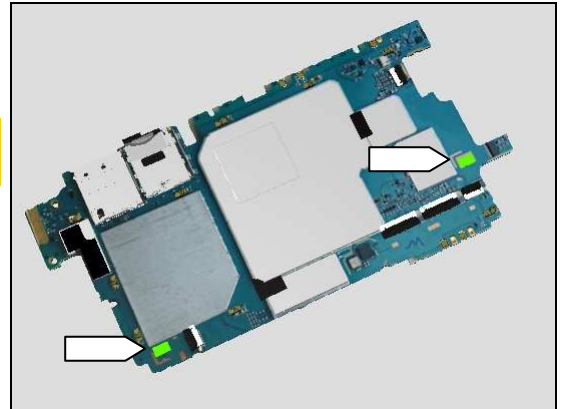
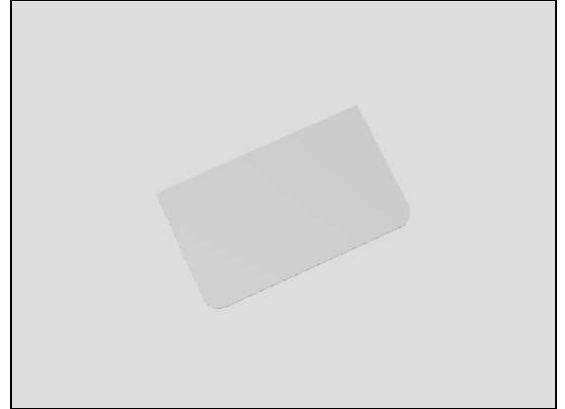
REMOVAL

Detach to remove them both from the Main PBA.

Make sure all remaining adhesive residue have been removed from Main PBA!

INSTALLATION

Attach two new Foil Adhesive Double Side ZIF Connectors using the guiding marks of the Main PBA and press along to make it securely attached.



Replacement

4.24 Foil Adhesive Key FPC

Follow the 3.1 – 3.10 Disassembly instructions!

Prepare the new Foil Adhesive Key FPC.

Follow the 5.4 – 5.14 Reassembly instructions!

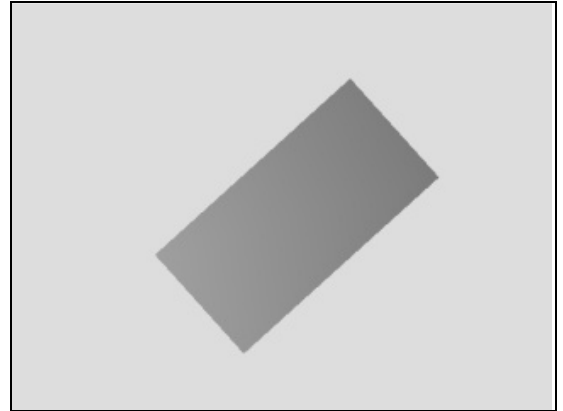
REMOVAL

Detach to remove it from the Front Assy.

Make sure all remaining adhesive residue have been removed from Front Assy!

INSTALLATION

Attach a new Foil Adhesive Key FPC using the guiding frame of the Front Assy and press along to make it securely attached.



Replacement

4.25 Foil Adhesive Proximity Sensor

Follow the 3.1 – 3.10 Disassembly instructions!

Follow the 4.32 Removal instructions!

Prepare the new Foil Adhesive Proximity Sensor.

Follow the 4.32 Installation instructions!

Follow the 5.4 – 5.14 Reassembly instructions!

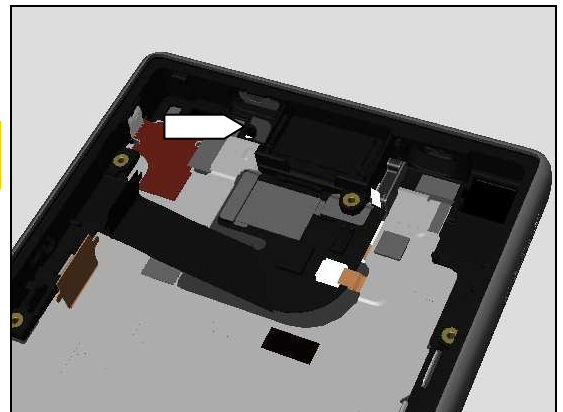
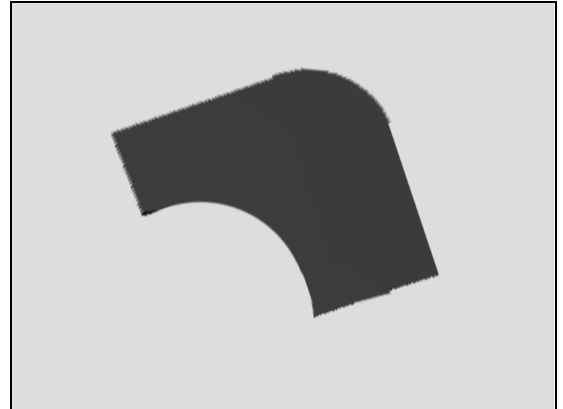
REMOVAL

Detach to remove it from the Cover Rear Sub Assy.

Make sure all remaining adhesive residue have been removed from Front Assy!

INSTALLATION

Attach a new Foil Adhesive Proximity Sensor into the cavity of the Cover Rear Sub Assy and press along to make it securely attached.



Replacement

4.26 Foil Adhesive RF Conductive Key FPC Bottom

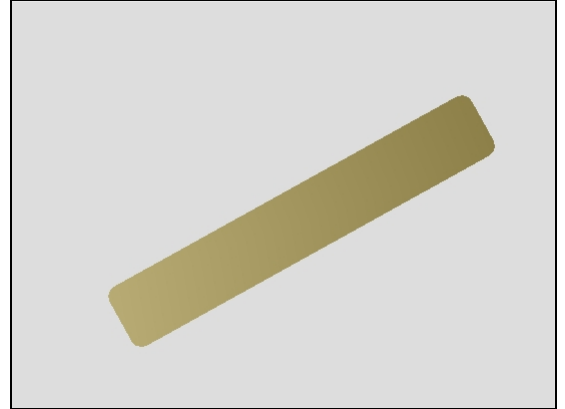
Follow the 3.1 – 3.10 Disassembly instructions!

Follow the 4.32 Removal instructions!

Prepare the new Foil Adhesive RF Conductive Key FPC Bottom.

Follow the 4.32 Installation instructions!

Follow the 5.4 – 5.14 Reassembly instructions!



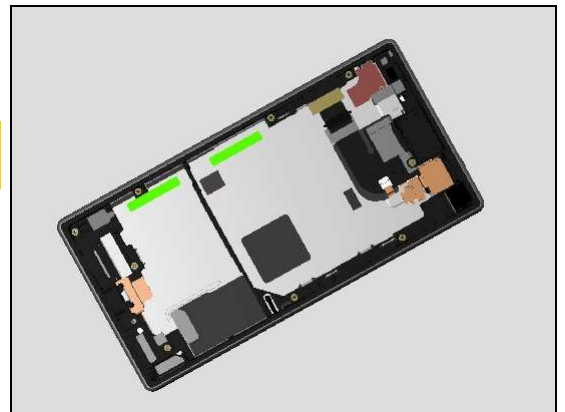
REMOVAL

Detach to remove them both from the Front Assy.

Make sure all remaining adhesive residue have been removed from Front Assy!

INSTALLATION

Attach two new Foil Adhesive RF Conductive Key FPC Bottoms using the guiding frame of the Front Assy and press along to make it securely attached.



Replacement

4.27 Foil Adhesive RF Conductive Key FPC Top

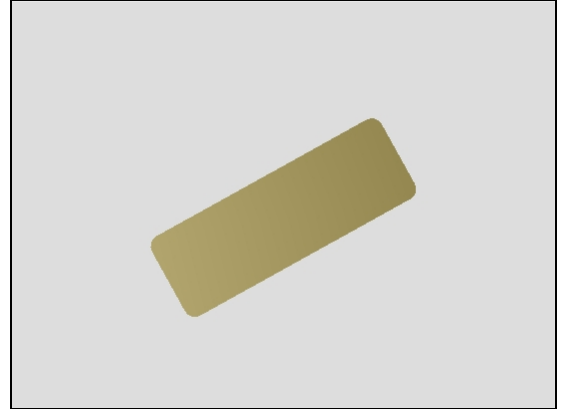
Follow the 3.1 – 3.10 Disassembly instructions!

Follow the 4.32 Removal instructions!

Prepare the new Foil Adhesive RF Conductive Key FPC Top.

Follow the 4.32 Installation instructions!

Follow the 5.4 – 5.14 Reassembly instructions!



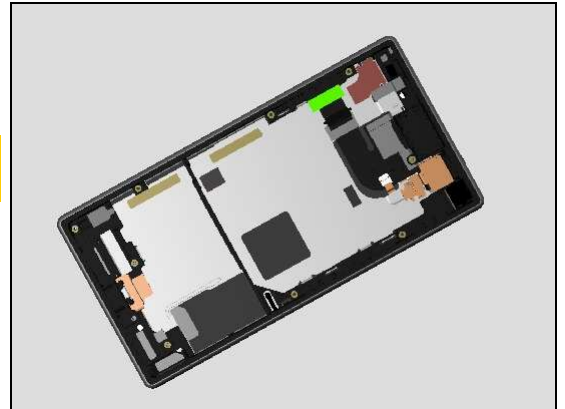
REMOVAL

Detach to remove the Foil Adhesive RF Conductive Key FPC Top from the Front Assy.

Make sure all remaining adhesive residue have been removed from Front Assy!

INSTALLATION

Attach the new Foil Adhesive RF Conductive Key FPC Top using the guiding frame of the Front Assy and press along to make it securely attached.



Replacement

4.28 Foil Adhesive Vib

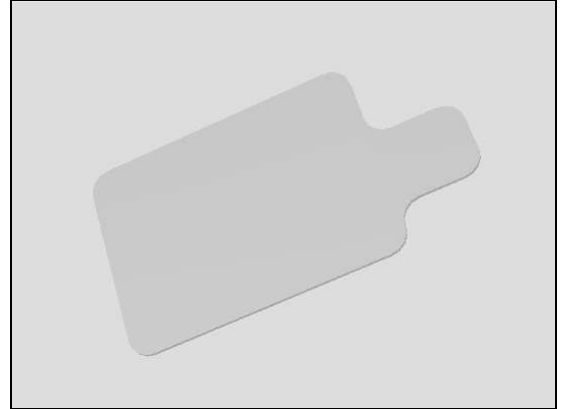
Follow the 3.1 – 3.10 Disassembly instructions!

Follow the 4.32 Removal instructions!

Prepare the new Foil Adhesive Vib.

Follow the 4.32 Installation instructions!

Follow the 5.X – 5.Y Reassembly instructions!



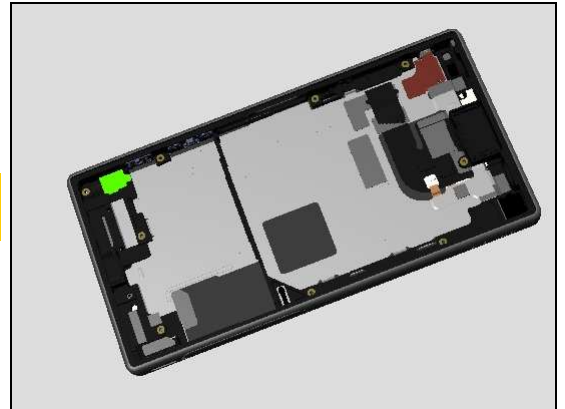
REMOVAL

Detach to remove the Foil Adhesive Vib. from the Front Assy.

Make sure all remaining adhesive residue have been removed from Front Assy!

INSTALLATION

Attach a new Foil Adhesive Vib. using the guiding frame of the Front Assy and press along to make it securely attached.



Replacement

4.29 Foil Adhesive WR Panel Back

Follow the 3.1 – 3.2 Disassembly instructions!
Prepare the new Foil Adhesive WR Panel Back.
Follow the 5.13 – 5.14 Reassembly instructions!

REMOVAL

Detach the Foil Adhesive WR Panel Back and remove it with a pair of Plastic Tweezers.

Clean the edges of the Panel Back carefully with alcohol before the new Foil Adhesive WR Panel Back is mounted. This action is done to secure the water resistant of the unit.

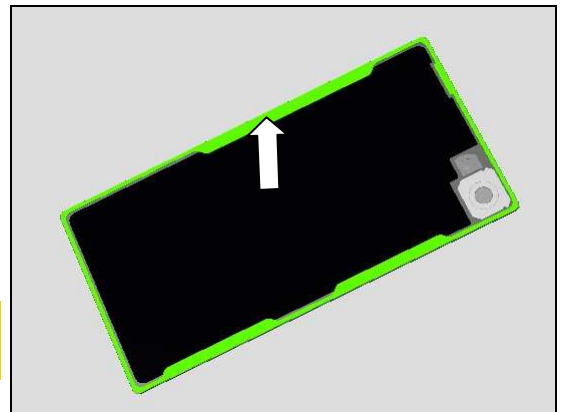
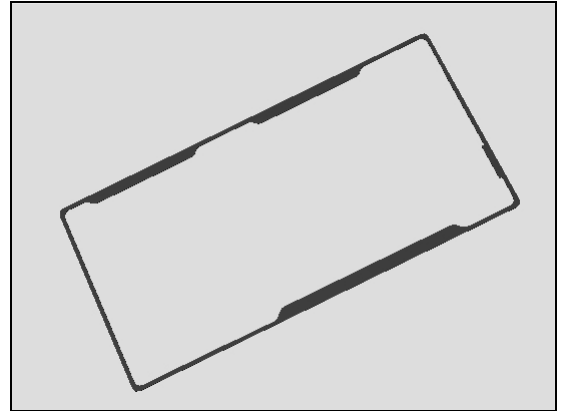
Scrap! Not to be reused!

Do not damage or scratch the Panel Back!

Do the same of the other side.

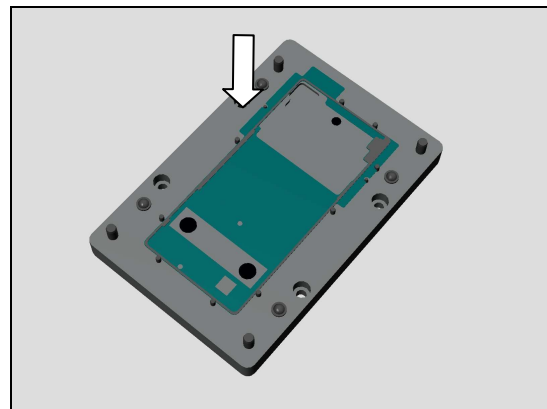
INSTALLATION

Prepare the Rear Panel Adhesive Alignment Fixture.

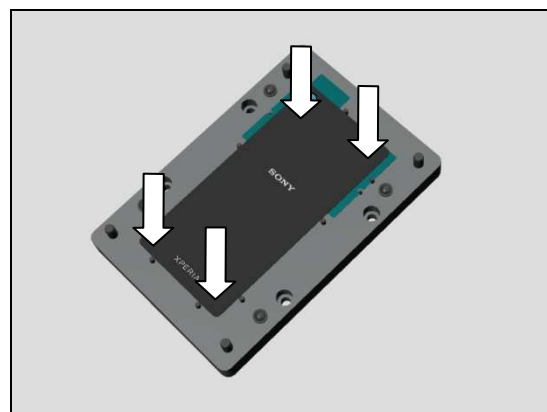


Replacement: Foil Adhesive WR Panel Back

Place a new Foil Adhesive WR Panel Back with protection film onto the Rear Panel Adhesive alignment fixture.



Place the old Panel Back above the Foil Adhesive WR Panel Back with correct position and press to secure the attachment.



Replacement

4.30 FPC Assembly Bottom

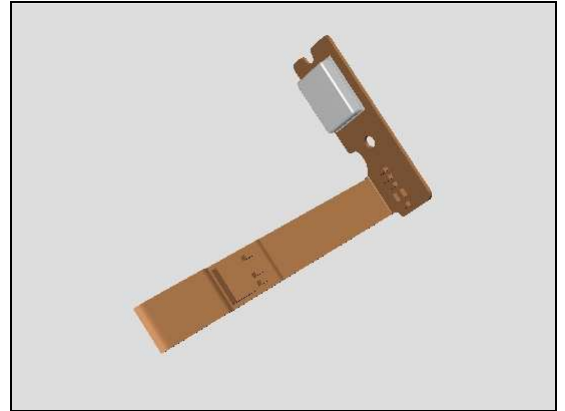
Follow the 3.1 – 3.10, 3.14 Disassembly instructions!

Follow the 4.41 Removal instructions!

Prepare the new FPC Assembly Bottom.

Follow the 4.41 Installation instructions!

Follow the 5.1, 5.4 – 5.14 Reassembly instructions!



Replacement

4.31 FPC Assembly JK

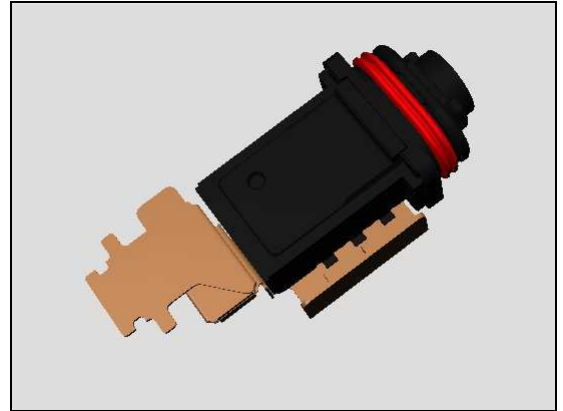
Follow the 3.1 – 3.10, 3.12 Disassembly instructions!

Follow the 4.19 Removal instructions!

Prepare the new FPC Assembly JK.

Follow the 4.19 Installation instructions!

Follow the 5.3 – 5.14 Reassembly instructions!



Replacement

4.32 FPC Assembly Key

Follow the 3.1 – 3.10 Disassembly instructions!

Follow the 4.36 Removal instructions!

Prepare the new FPC Assembly Key.

Follow the 4.36 Installation instructions!

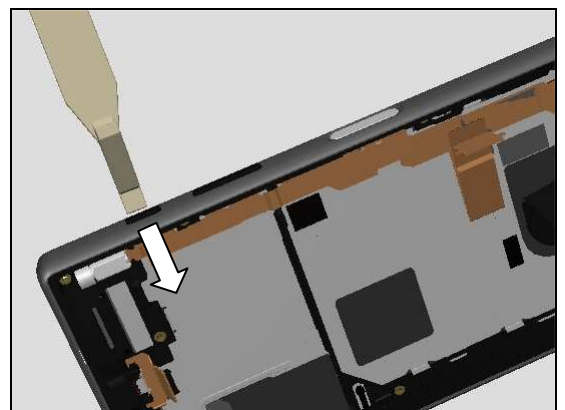
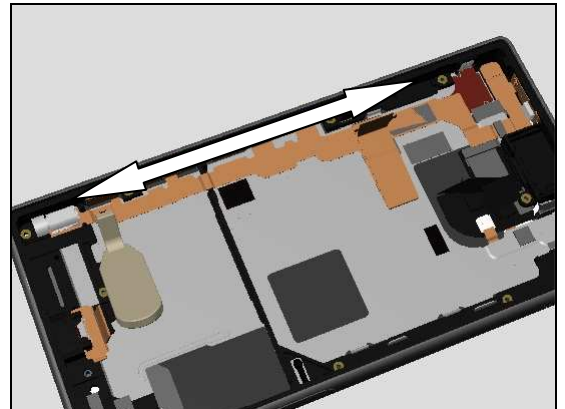
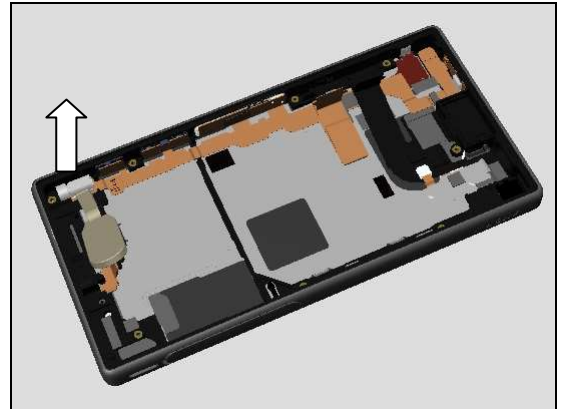
Follow the 5.4 – 5.14 Reassembly instructions!

REMOVAL

Insert the Front Opening Tool underneath the Vibrator FPC of the FPC Assembly Key.

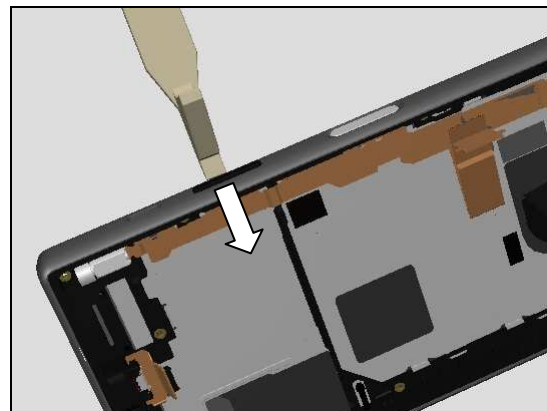
Slide as shown direction to detach it from the Front Assy.

Push from outside to release the Key Camera and WR Key Camera Sub Assy gently.

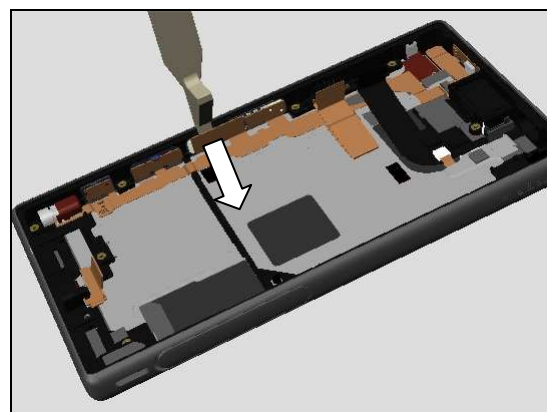


Replacement: FPC Assembly Key

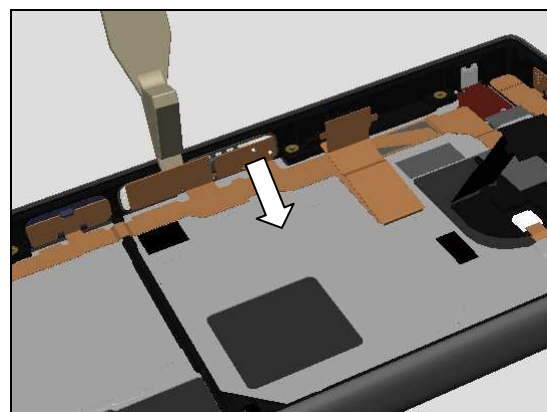
Push from outside to release the Key Volume and WR Key Volume Sub Assy gently.



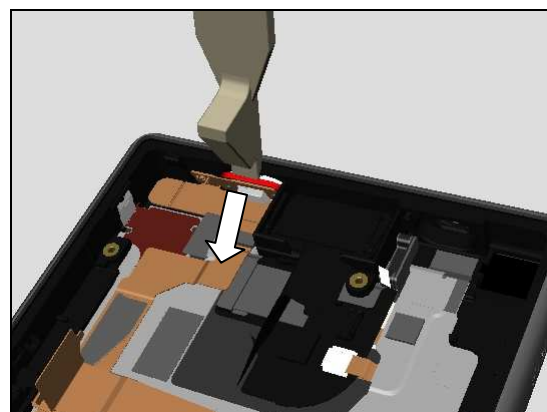
Disconnect the BtB connector of the Fingerprint sensor assy.



Detach to separate the Fingerprint sensor assy from FPC Assembly Key.

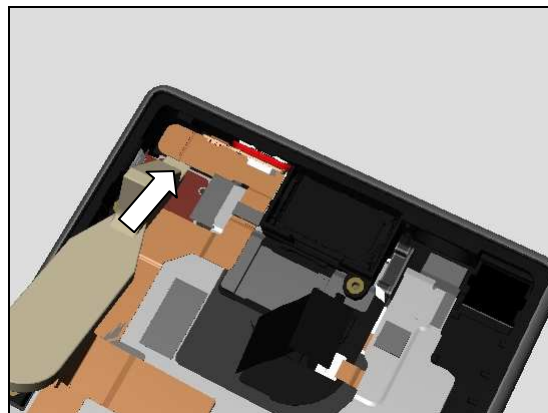


Insert the Front Opening Tool into the 2nd Mic cavity and Push to release it from its cavity gently.

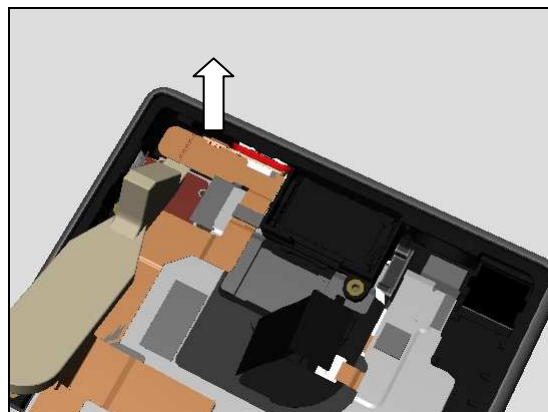


Replacement: FPC Assembly Key

Insert the Front Opening Tool underneath the FPC as shown.

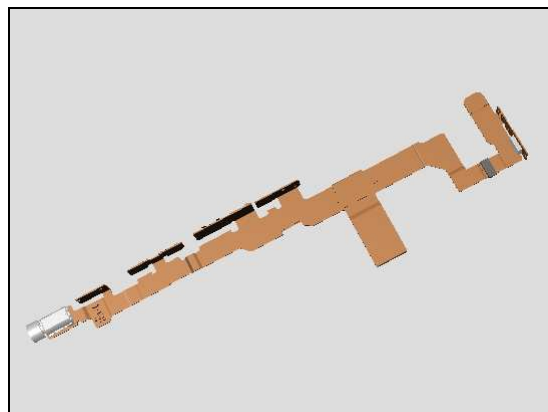


Pull upwards to release it from the cavity.



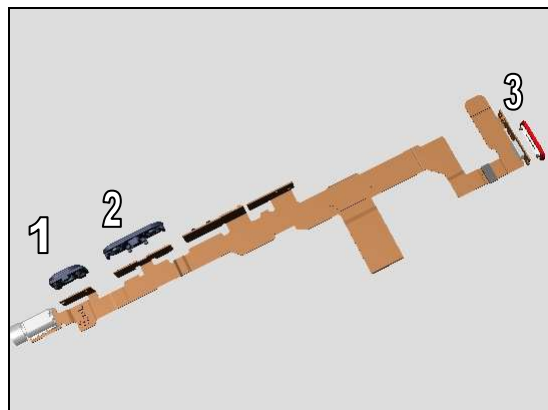
INSTALLATION

Prepare a new FPC Assembly Key in place.



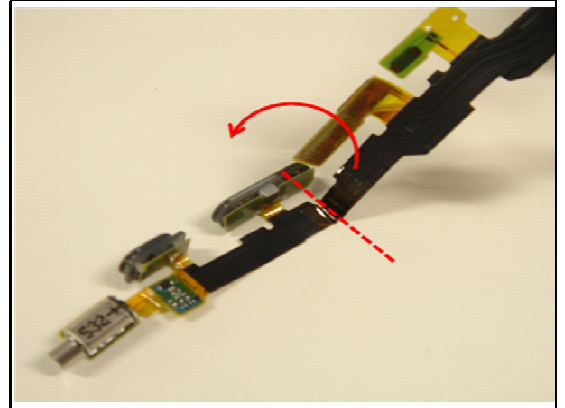
Follow 4.XX Installation instruction to pre-assemble below part on FPC Assembly Key before assembly.

1. A new WR Key Camera Sub Assy;
2. A new WR Key Volume Sub Assy;
3. A new Mic Sub Assy



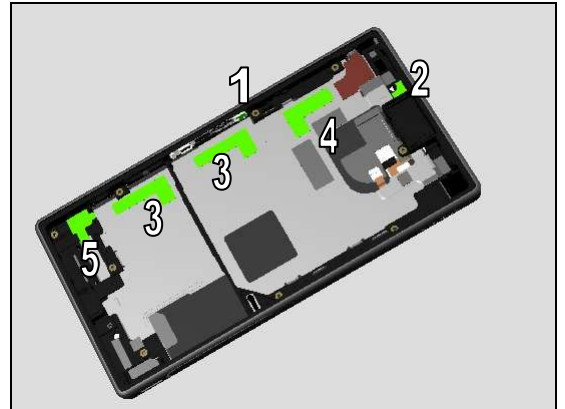
Replacement: FPC Assembly Key

Pre-bend the FPC Assembly Key as shown position.

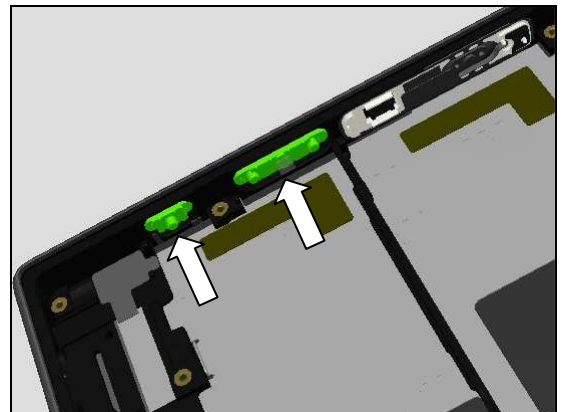


Follow 4.12, 4.25 - 4.28, Removal and Installation instruction to below part on Front Assy before FPC Assembly Key assembly!

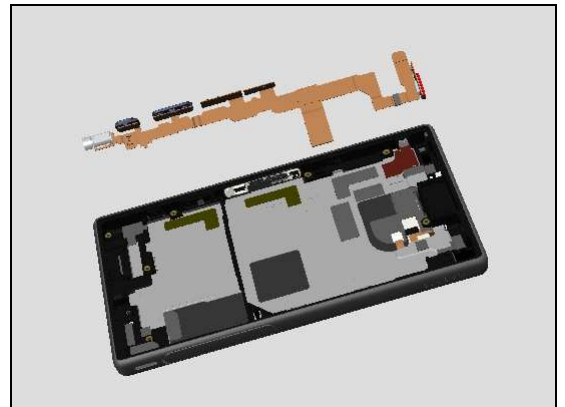
1. A new Adhesive Double Side FP Sensor
2. A new Foil Adhesive Proximity Sensor
3. Two new Foil Adhesive RF Conductive Key FPC Bottom
4. A new Foil Adhesive RF Conductive Key FPC Top
5. A new Foil Adhesive Vib



Follow 4.37 - 4.38 Installation instruction to assemble Key Camera and Key Volume.

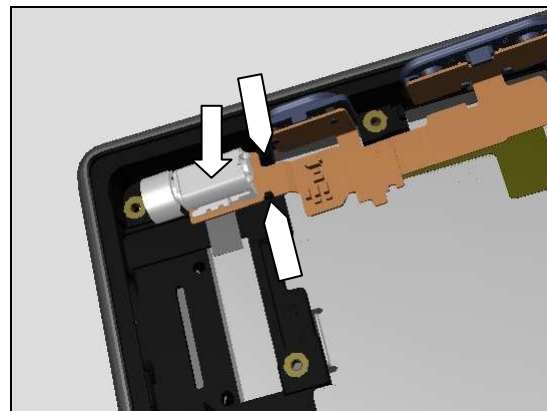


Prepare the pre-assembled FPC Assembly Key in place.

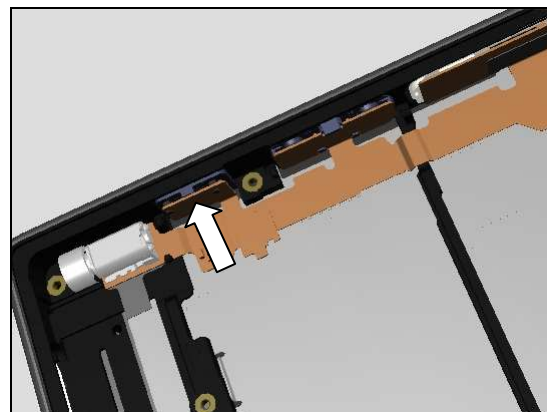


Replacement: FPC Assembly Key

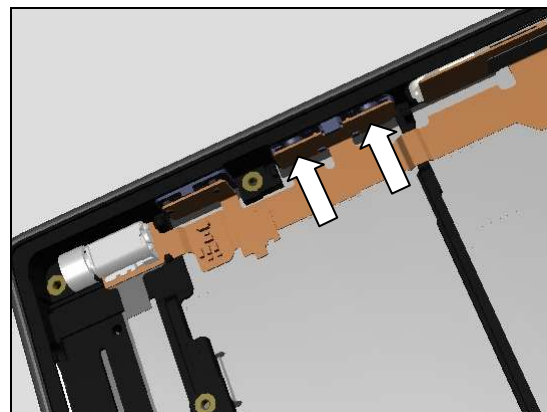
Attach the Vibrate FPC using guiding poles as picture shown.



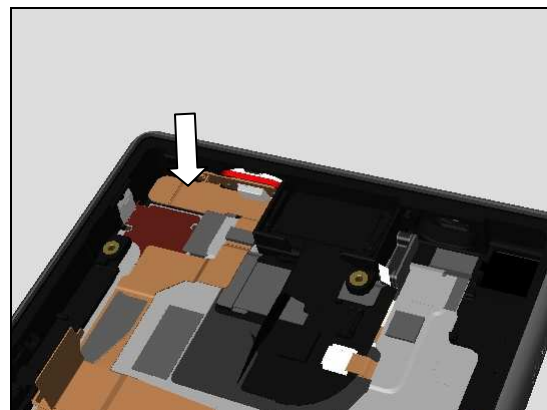
Insert the Camera Key FPC into the hole and press with Nylon pointer until the rubber is fully snapped.



Insert the Volume Key FPC into the hole and press with Nylon pointer until the rubber is fully snapped.

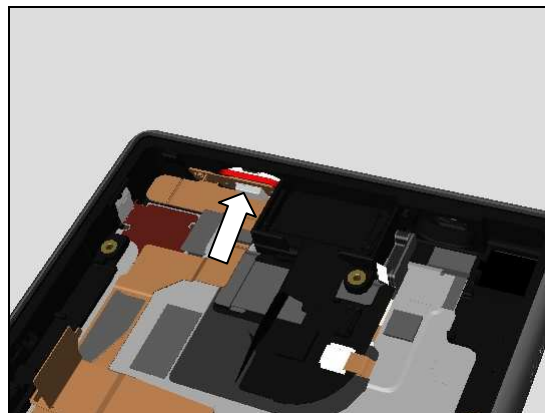


Press the Proximity Sensor part of FPC into the cavity.



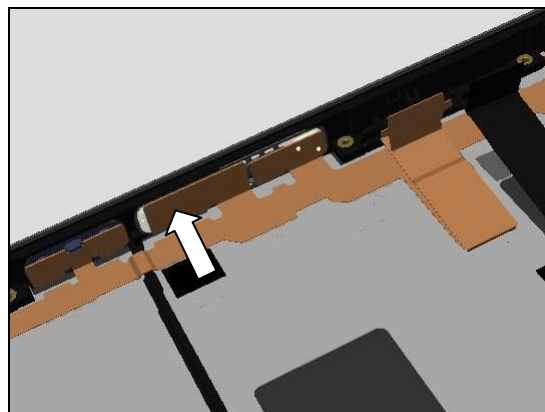
Replacement: FPC Assembly Key

Press the 2nd Mic of FPC into the cavity until the red ring is fully inserted.

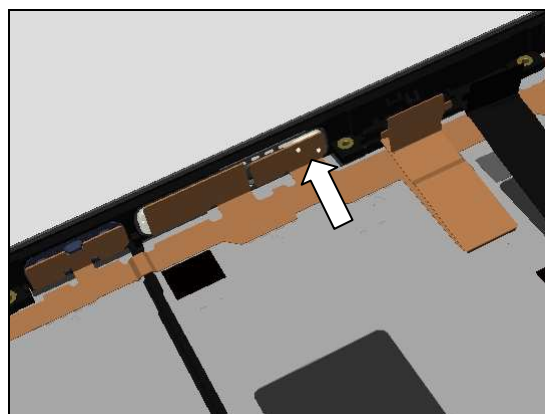


Press to snap the BtB connector to Fingerprint sensor Assy.

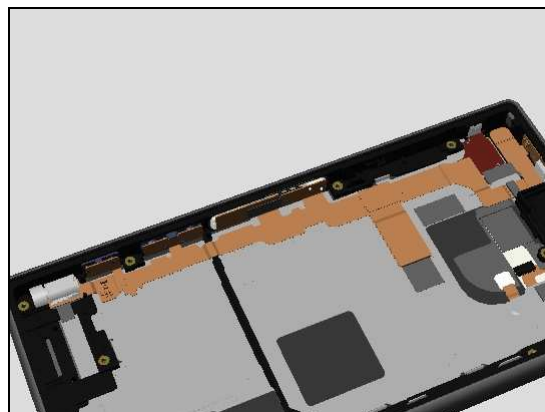
Inspect the the BtB connector after assembly!



Attach the on/off key FPC to Adhesive Double Side FP Sensor.



Press long the FPC to make it securely attached.



Replacement

4.33 FPC Assembly NFC antenna & Carrier Holder NFC Antenna

Follow the 3.1 – 3.5 Disassembly instructions!

Prepare the new FPC Assembly NFC antenna & Carrier
Holder NFC Antenna.

Follow the 5.10 – 5.14 Reassembly instructions!

REMOVAL

Insert the Guitar Pick from corner.

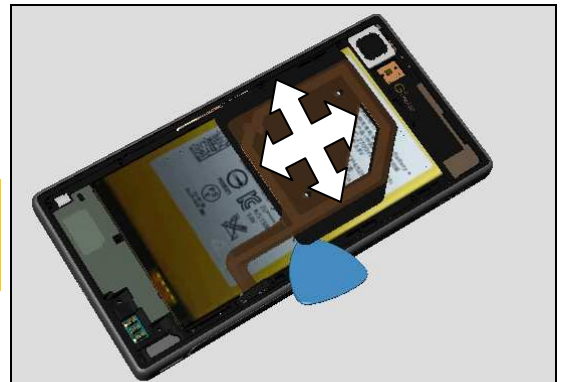
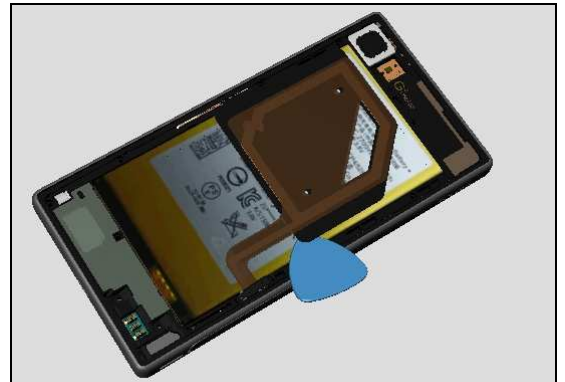
Slide gently to detach the FPC Assembly NFC antenna from
the Battery.

Do not damage the Battery!

***Scrap the FPC Assembly NFC antenna and Carrier
Holder NFC Antenna!***

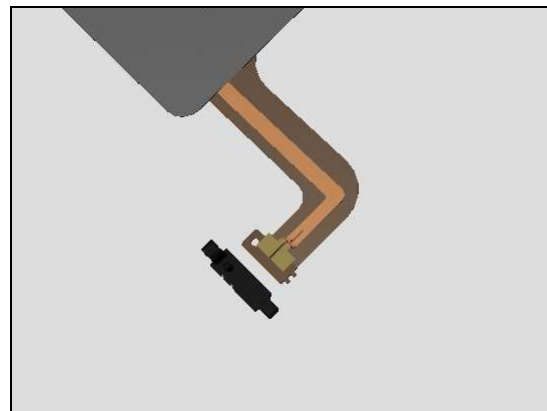
INSTALLATION

Prepare a new FPC Assembly NFC antenna and a new
Carrier Holder NFC Antenna in place

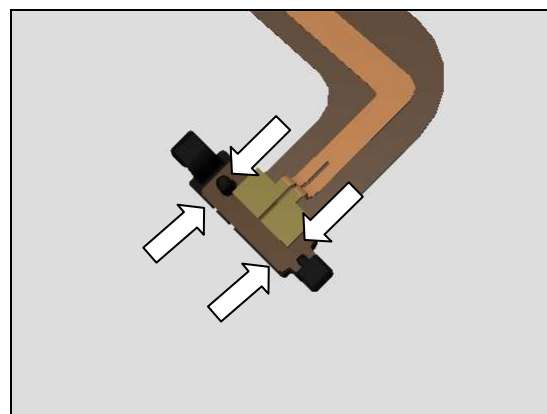


Replacement: FPC Assembly NFC antenna

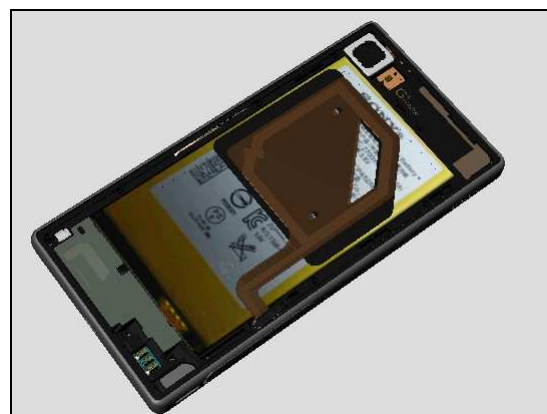
attach the Carrier Holder NFC Antenna with alignment of guiding pole on the FPC Assembly NFC antenna



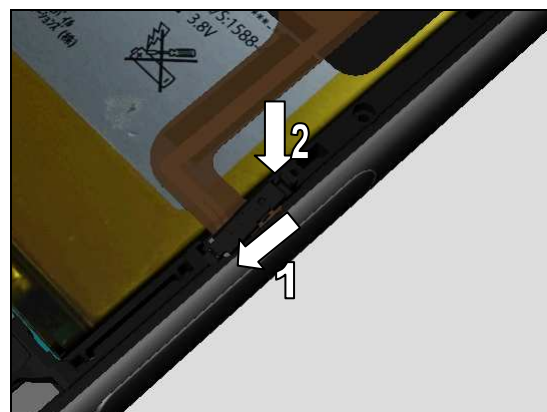
Press to make it securely attached.



Put the FPC Assembly NFC antenna on the Battery.

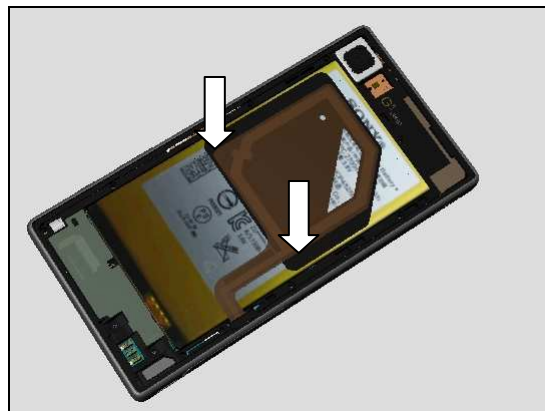


Connect the connector of FPC Assembly NFC antenna as shown sequence shown in the picture.

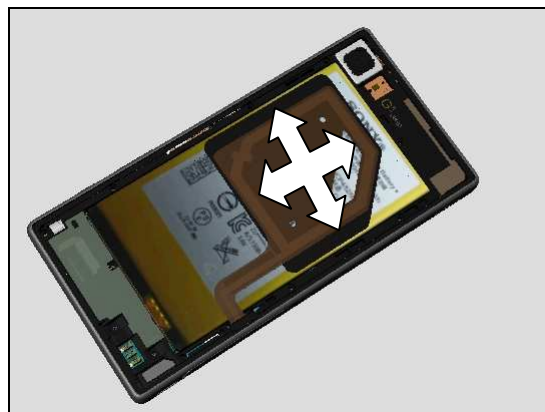


Replacement: FPC Assembly NFC antenna

Lay flat the FPC Assembly NFC antenna with alignment of Battery edge.



Press long gently on the FPC Assembly NFC antenna to make it securely attached.



Replacement

4.34 FPC Assembly USB & Carrier Holder Guide USB Black

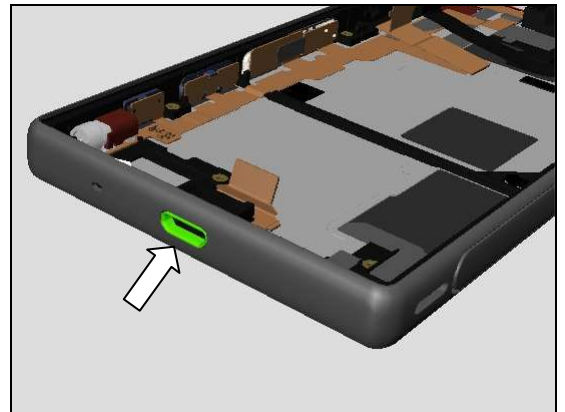
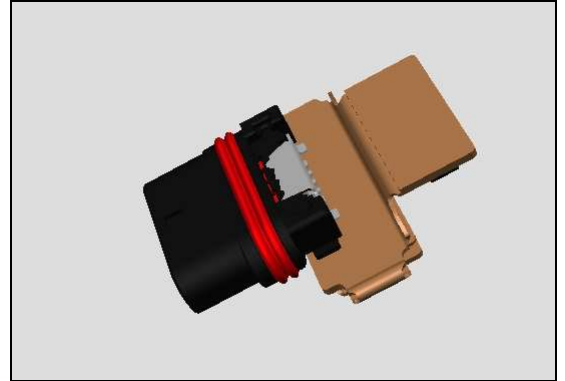
Follow the 3.1 – 3.10 Disassembly instructions!

Prepare the new FPC Assembly USB & Carrier Holder Guide USB Black.

Follow the 5.4 – 5.14 Reassembly instructions!

REMOVAL

Push from outside to release the FPC Assembly USB & Carrier Holder Guide USB Black.

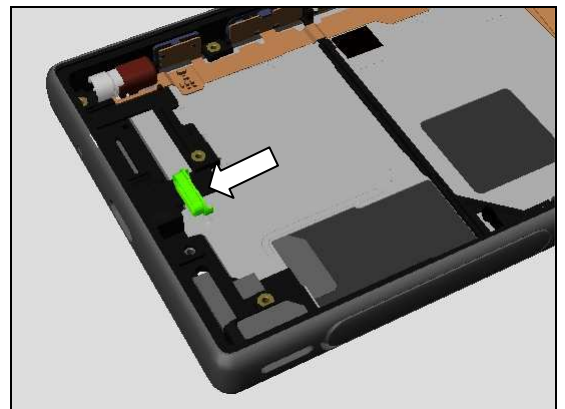


INSTALLATION

Prepare a new Carrier Holder Guide USB Black in place with correct direction.

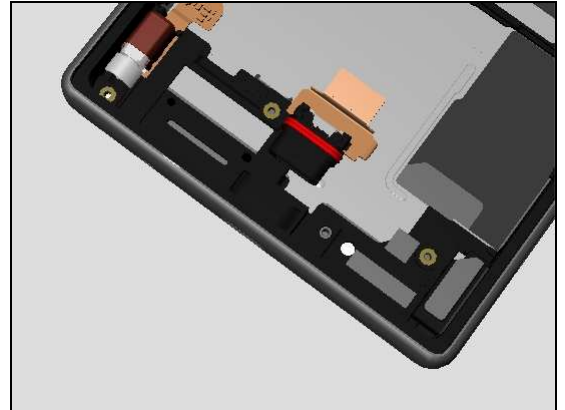


Insert the Carrier Holder Guide USB Black from the USB hole.

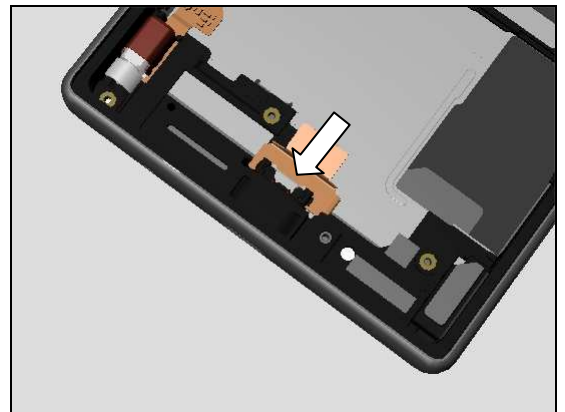


Replacement: FPC Assembly USB

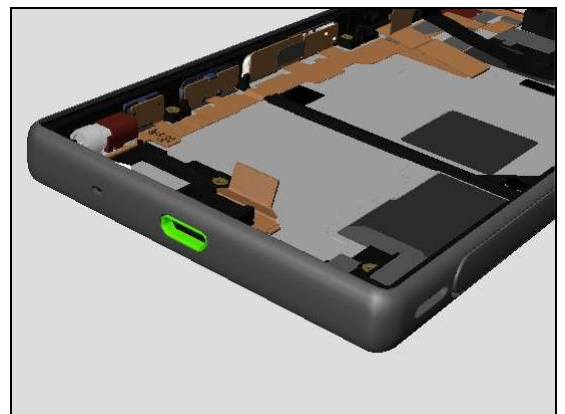
Prepare a new FPC Assembly USB in place.



Insert a new FPC Assembly USB into the USB hole with Nylon Pointer until the red ring is fully inserted.



Inspect the Carrier Holder Guide USB Black position.



Replacement

4.35 Front Assy

Follow the 3.1 – 3.10 Disassembly instructions!

*Follow the 4.21, 4.24-4.28, 4.32, 4.34 - 4.38, 4.40 – 4.41
Removal instructions!*

Prepare the new Front Assy.

*Follow the 4.21, 4.24-4.28, 4.32, 4.34 - 4.38, 4.40 – 4.41
Installation instructions!*

Follow the 5.4 – 5.14 Reassembly instructions!



Replacement

4.36 Holder Vibrator

Follow the 3.1 – 3.5 Disassembly instructions!

Prepare the new Holder Vibrator.

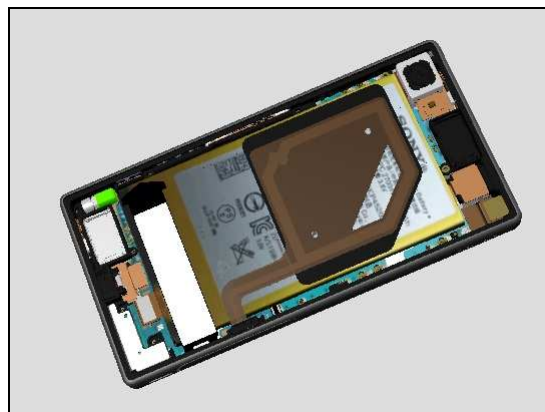
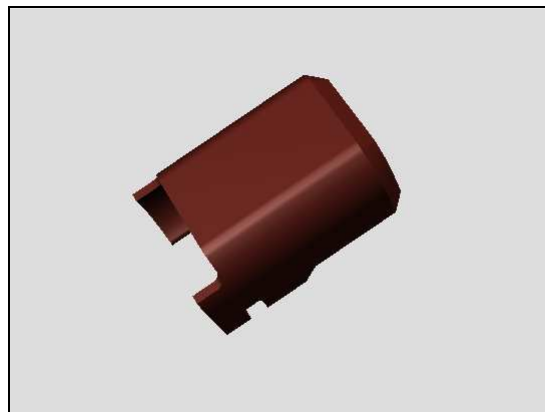
Follow the 5.10 – 5.14 Reassembly instructions!

REMOVAL

Remove it gently from Vibrator.

INSTALLATION

Place a new Holder Vibrator to snap the Vibrator as shown.



Replacement

4.37 Key Camera

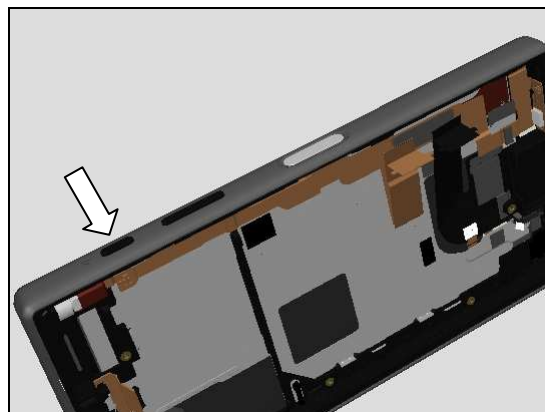
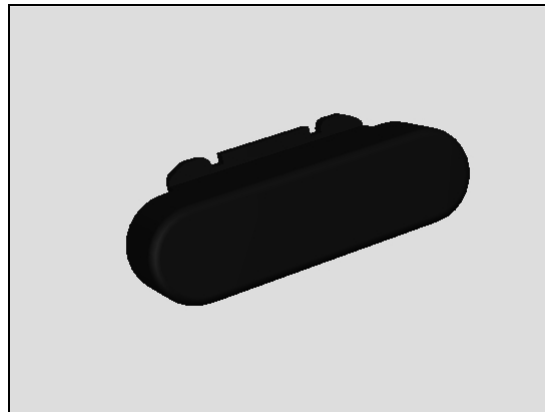
Follow the 3.1 – 3.10 Disassembly instructions!

Prepare the new Key Camera.

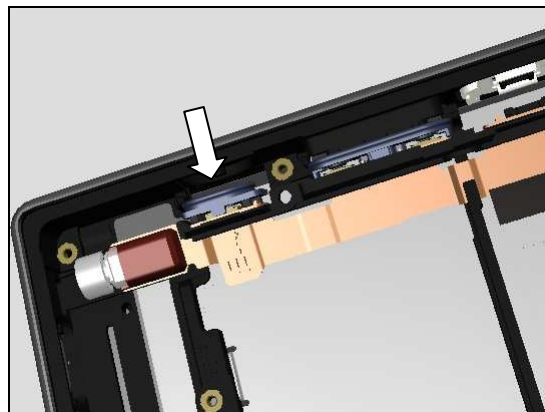
Follow the 5.4 – 5.14 Reassembly instructions!

REMOVAL

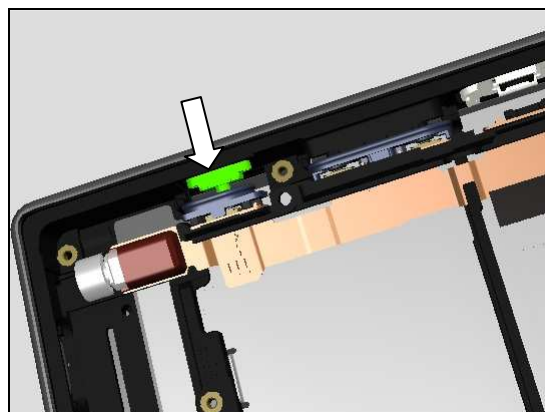
Push from outside to release the Key Camera.



Bend the FPC Camera Key to get access of Key Camera.



Remove the Key Camera from the cavity.



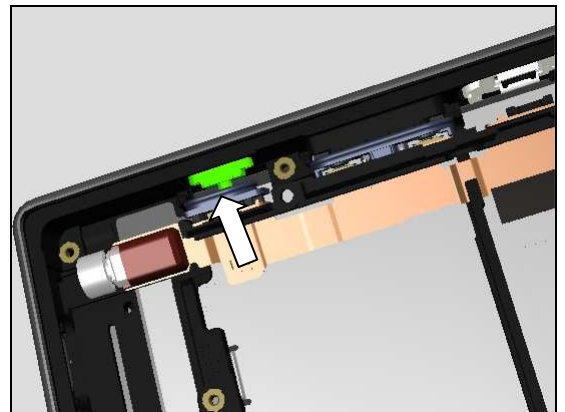
Replacement: Key Camera

INSTALLATION

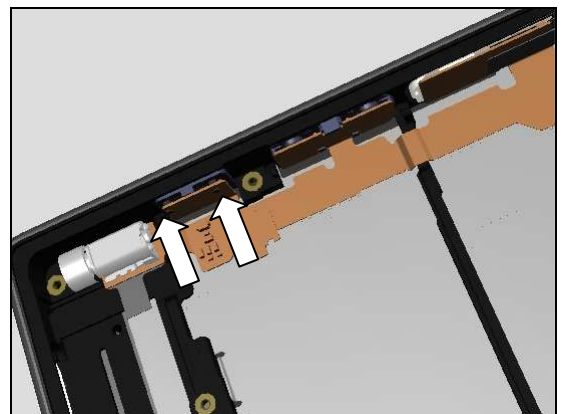
Prepare a new Key Camera in place with right direction.



Insert the Key Camera into the cavity.



Insert the Camera Key FPC into the hole and press with Nylon pointer until the rubber is fully snapped.



Replacement

4.38 Key Volume

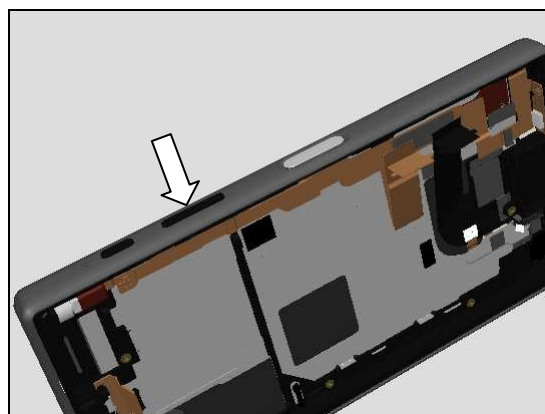
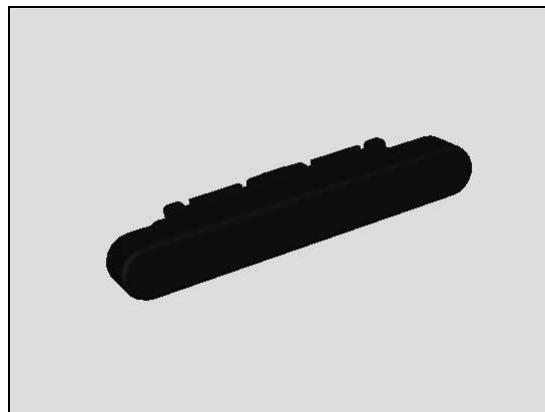
Follow the 3.X – 3.Y Disassembly instructions!

Prepare the new Key Volume.

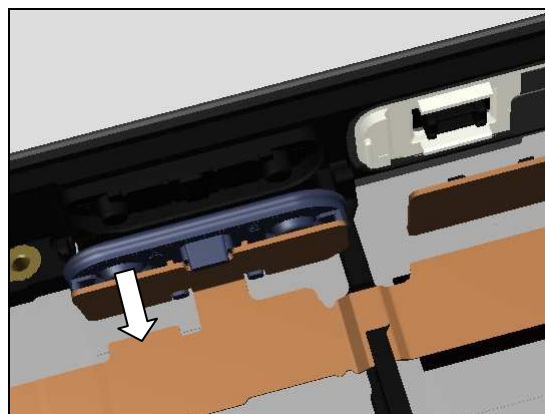
Follow the 5.X – 5.Y Reassembly instructions!

REMOVAL

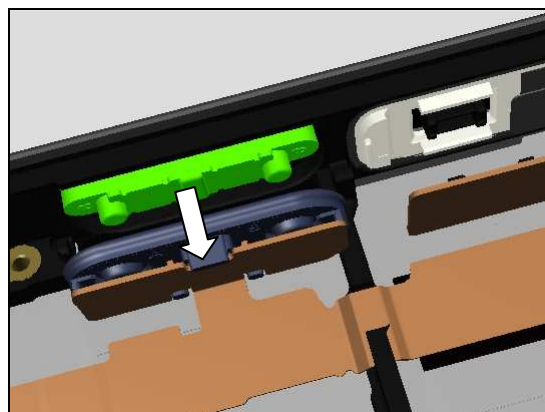
Push from outside to release the Key Volume.



Bend the FPC Volume Key to get access of Key Volume.



Remove the Key Volume from the cavity.



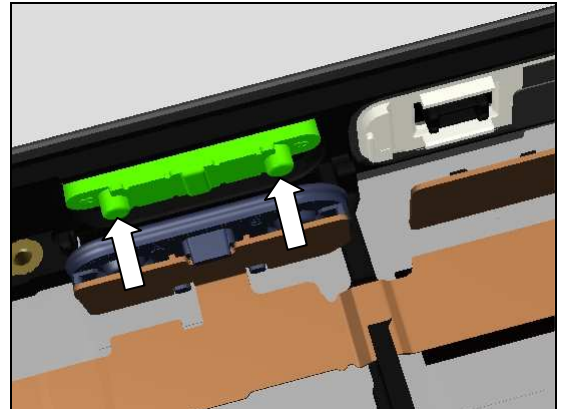
Replacement: Key Volume

INSTALLATION

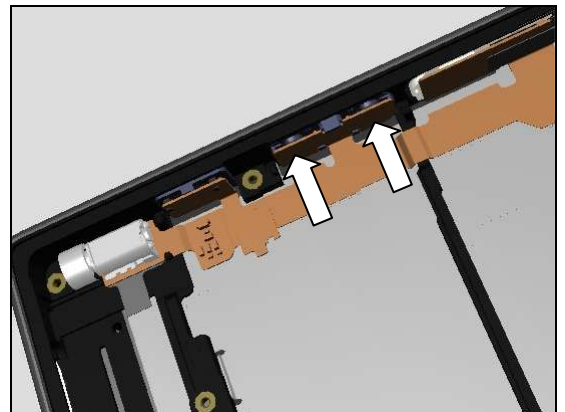
Prepare a new Key Volume in place with right direction.



Insert the Key Volume into the cavity.



Insert the Volume Key FPC into the hole and press with Nylon pointer until the rubber is fully snapped.



Replacement

4.39 Liquid indicator

Prepare the new Liquid indicator.

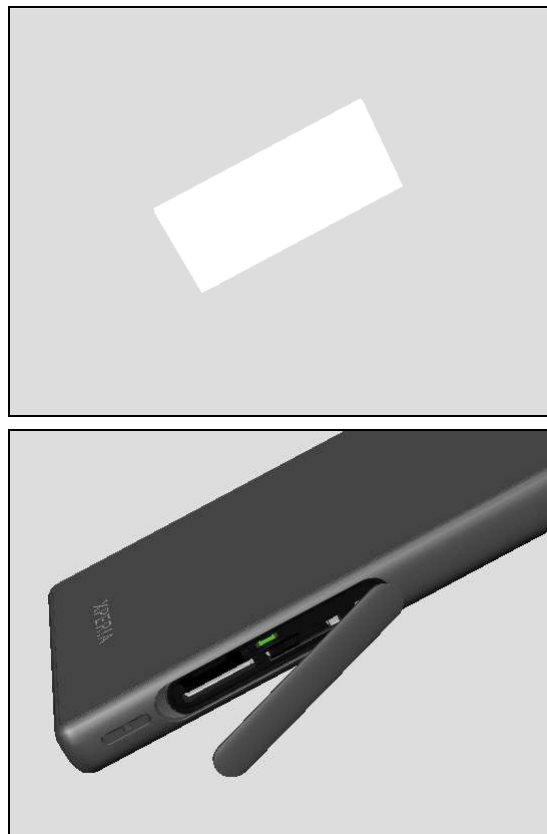
REMOVAL

Detach to remove it from the Cover Rear Sub Assy.

Make sure all remaining adhesive residue have been removed from Cover Rear Sub Assy!

INSTALLATION

Attach a new Liquid indicator into the cavity and press along to make it securely attached.



Replacement

4.40 Loudspeaker + Ear Speaker 16.0 Rectangular & Foil WR Speaker

Follow the 3.1 – 3.10 Disassembly instructions!

Prepare the new Loudspeaker + Ear Speaker 16.0 Rectangular & Foil WR Speaker.

Follow the 5.4 – 5.14 Reassembly instructions!

REMOVAL

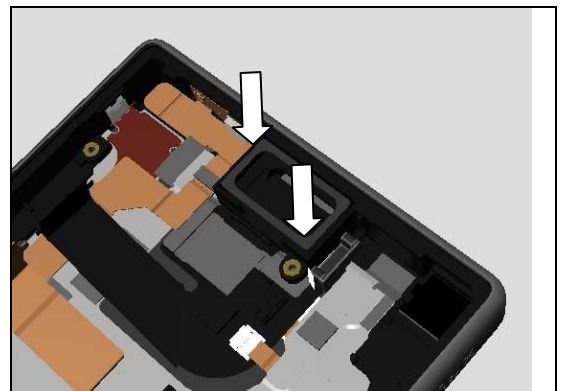
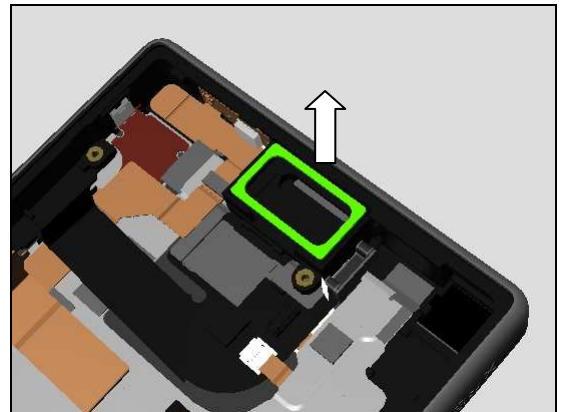
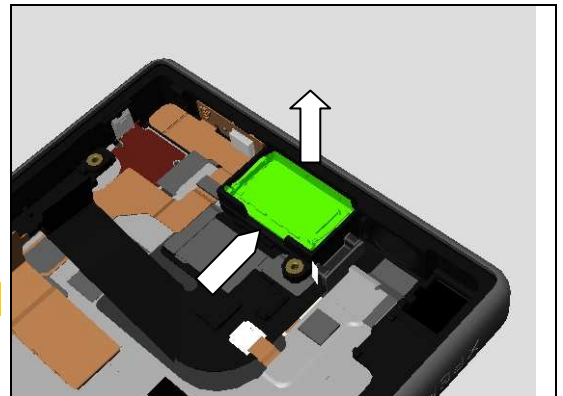
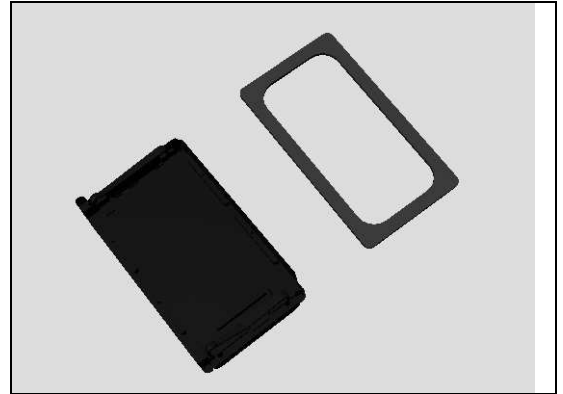
Insert the Front Opening Tool into the Ear speaker cavity and pull to release the Loudspeaker + Ear Speaker 16.0 Rectangular.

Scrap! Do not reuse!

Detach to remove the Foil WR Speaker.

INSTALLATION

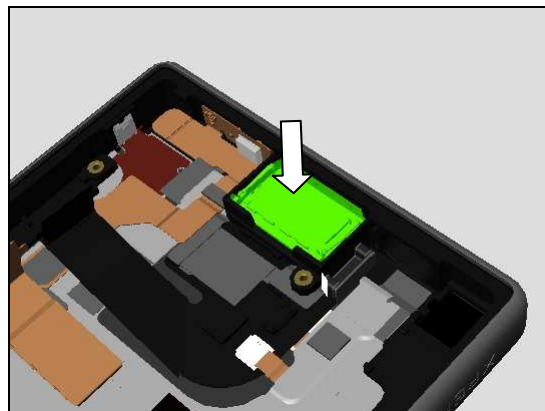
Attach a new Foil WR Speaker into the cavity as shown in picture.



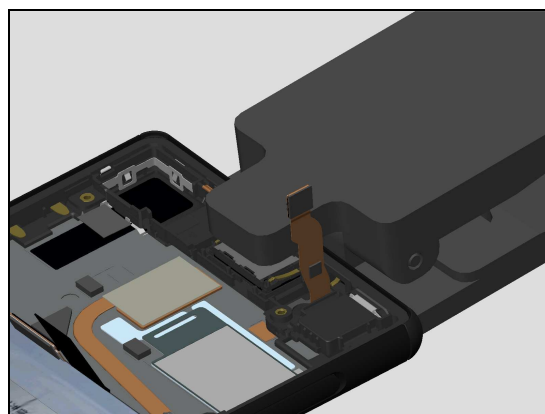
Replacement: Loudspeaker + Ear Speaker 16.0 Rectangular

Place a new Loudspeaker + Ear Speaker 16.0 Rectangular in its cavity.

Note the correct orientation of the Top Speaker contact spring to be installed as shown in picture!



Press it by using the Generic Press Clamp for 5 seconds.



Replacement

4.41 Mic Sub Assy

Follow the 3.1 – 3.10, 3.14 Disassembly instructions!

Follow the 4.32 Removal instructions!

Prepare the new Mic Sub Assy.

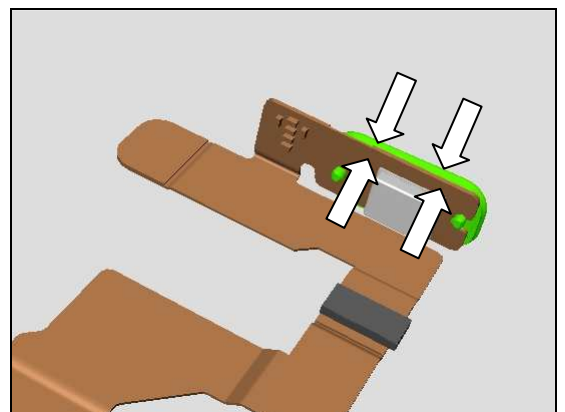
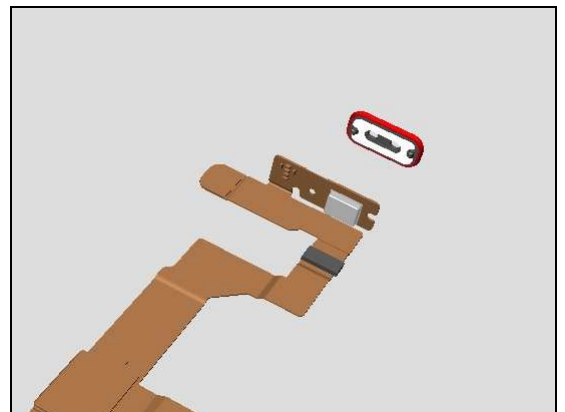
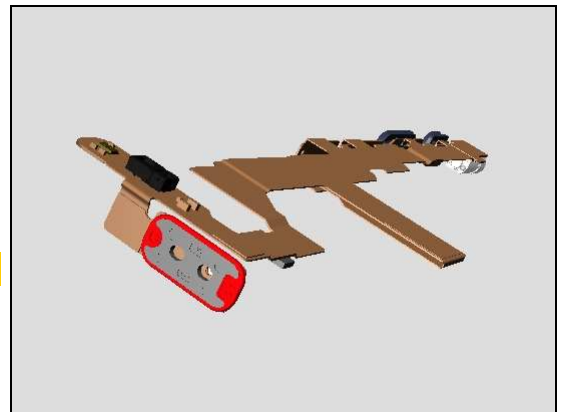
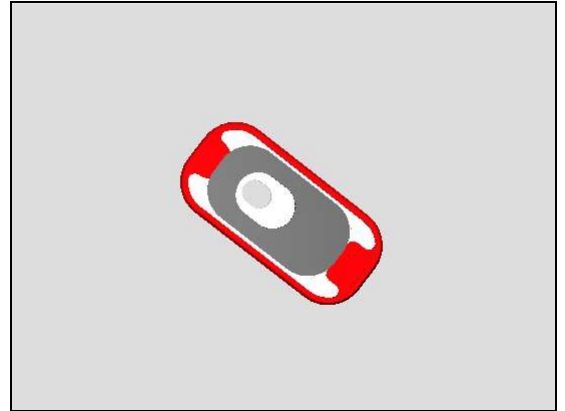
Follow the 4.32 Installation instructions!

Follow the 5.1, 5.4 – 5.14 Reassembly instructions!

REMOVAL

Insert and slide along both side to remove it from the 2nd Mic FPC with the Front Opening Tool.

Scrap! Do not reuse!



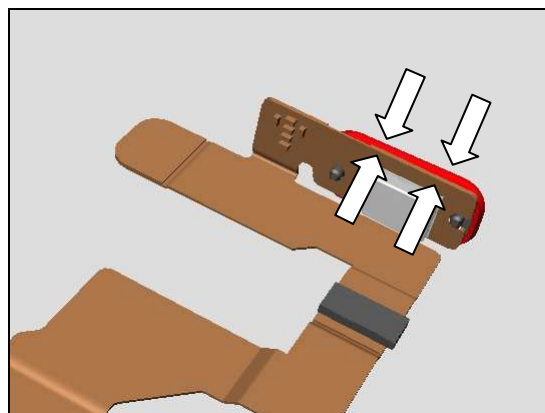
INSTALLATION

Prepare a new Mic Sub Assy in place.

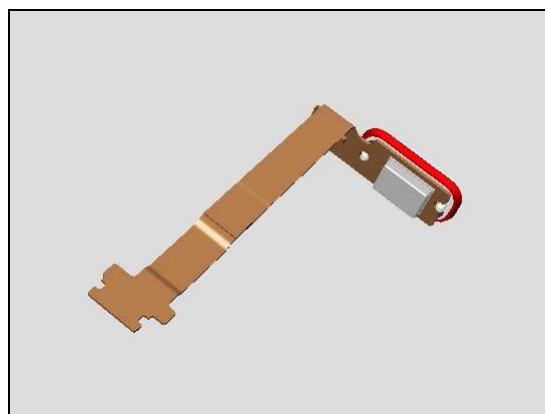
Press to snap and attach the Mic Sub Assy onto the FPC 2nd Mic using two guiding pins.

Replacement: Mic Sub Assy

Press for 5 seconds with finger to secure the attachment.



Do the same for the other Mic Sub Assy on the FPC Assembly Bottom!



Replacement

4.42 Ring FP Sensor

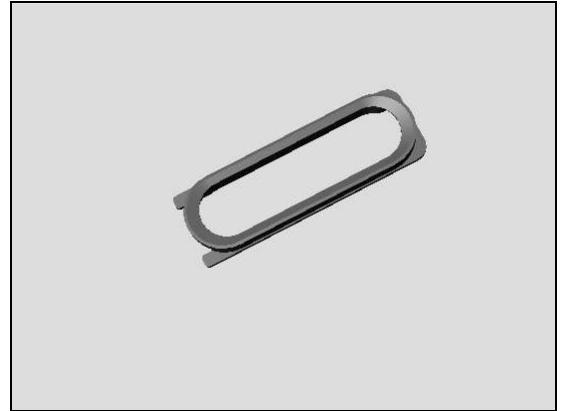
Follow the 3.1 – 3.10 Disassembly instructions!

Follow the 4.21 Removal instructions!

Prepare the new Ring FP Sensor.

Follow the 4.21 Installation instructions!

Follow the 5.4 – 5.14 Reassembly instructions!



Replacement

4.43 Sheet ANT Spacer JK FPC

Follow the 3.1 – 3.10 Disassembly instructions!

Prepare the new Sheet ANT Spacer JK FPC.

Follow the 5.4 – 5.14 Reassembly instructions!

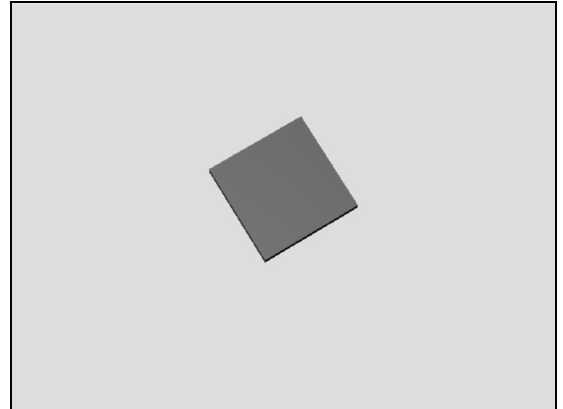
REMOVAL

Detach to remove it from the Front Assy.

Make sure all remaining adhesive residue have been removed!

INSTALLATION

Attach a new Sheet ANT Spacer JK FPC into the cavity and press along to make it securely attached.



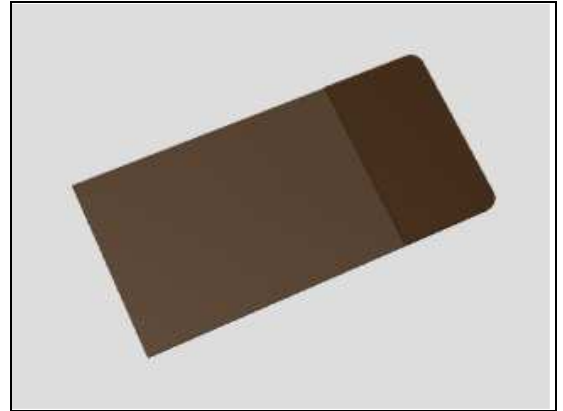
Replacement

4.44 Sheet Insulative NFC

Follow the 3.1 – 3.14 Disassembly instructions!

Prepare the new Sheet Insulative NFC

Follow the 5.1 – 5.14 Reassembly instructions!



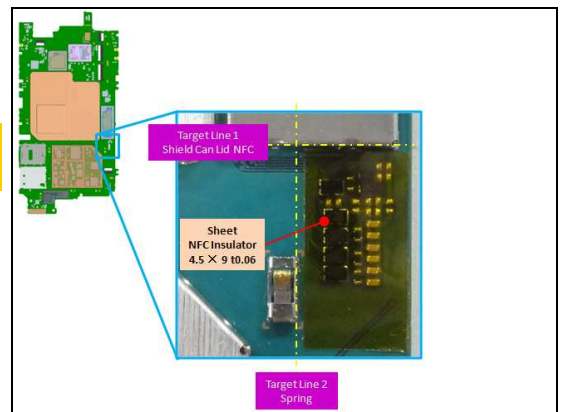
REMOVAL

Detach to remove it from the Main PBA.

Make sure all remaining adhesive residue have been removed!

INSTALLATION

Attach a new Sheet Insulative NFC according to guiding lines and press along gently to make them securely attached.



Replacement

4.45 Sheet Main PBA Bottom

Follow the 3.1 – 3.14 Disassembly instructions!

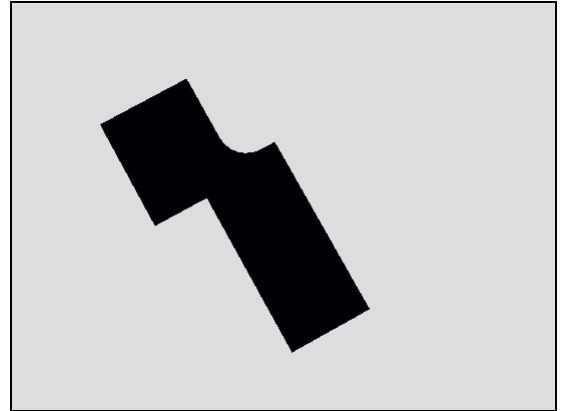
Prepare the new Sheet Main PBA Bottom.

Follow the 5.1 – 5.14 Reassembly instructions!

REMOVAL

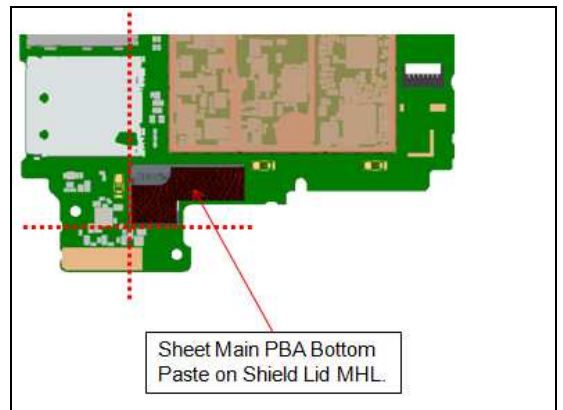
Detach to remove it from the Main PBA.

Make sure all remaining adhesive residue have been removed!



INSTALLATION

Attach a new Sheet Main PBA Bottom as picture shown and press along gently to make them securely attached.



Replacement

4.46 Sheet SIM

Follow the 3.1 – 3.14 Disassembly instructions!

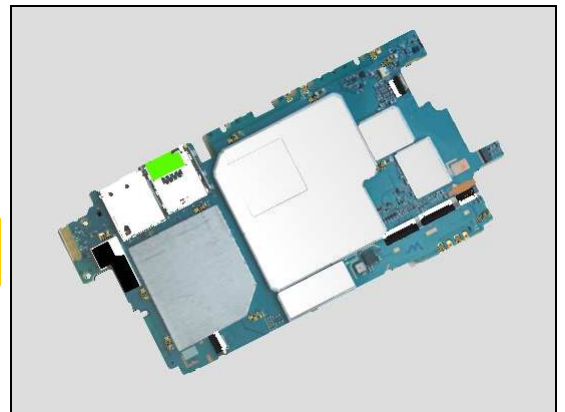
Prepare the new Sheet SIM.

Follow the 5.1 – 5.14 Reassembly instructions!

REMOVAL

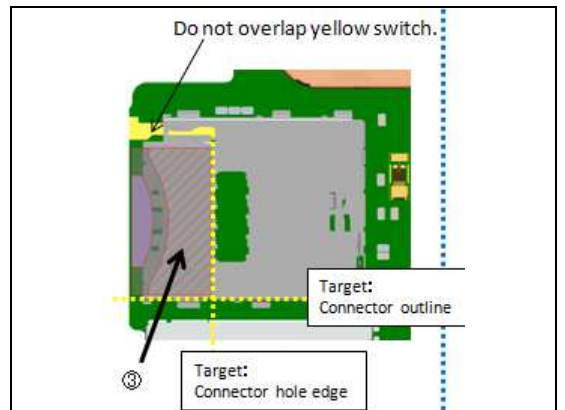
Detach to remove it from the Main PBA.

Make sure all remaining adhesive residue have been removed!



INSTALLATION

Attach a new Sheet SIM as picture shown and press along gently to make them securely attached.



Replacement

4.47 Sheet WR Mic

Follow the 3.1 – 3.10 Disassembly instructions!

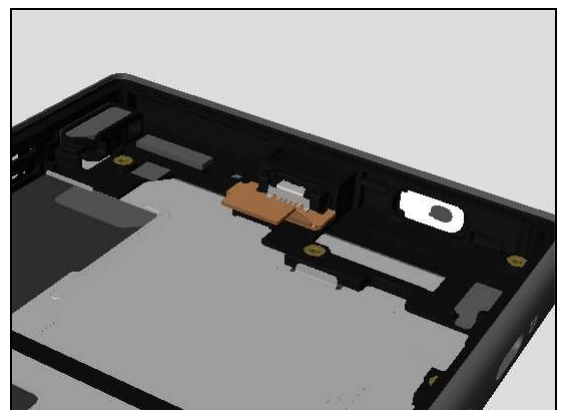
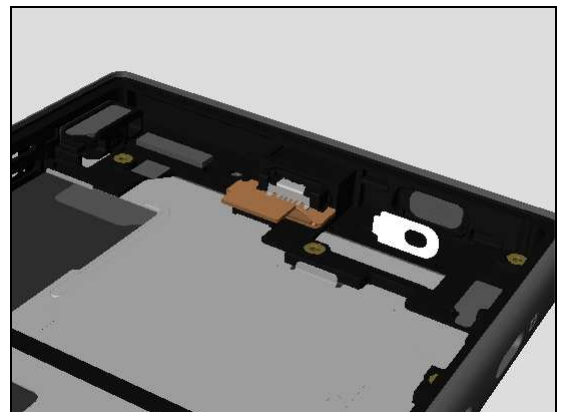
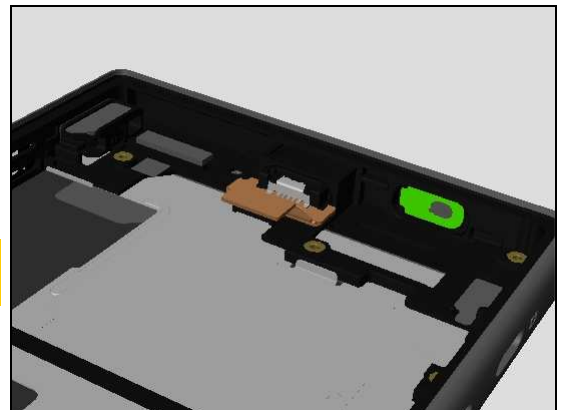
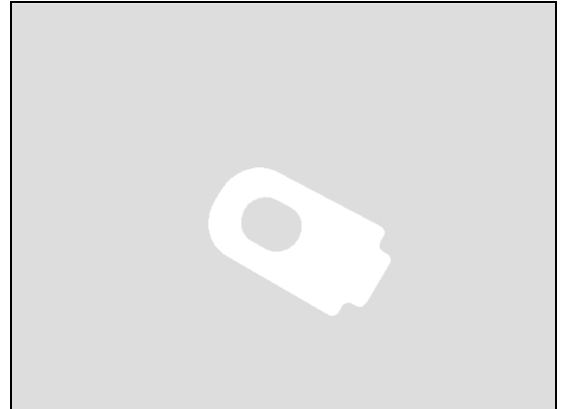
Prepare the new Sheet WR Mic.

Follow the 5.4 – 5.14 Reassembly instructions!

REMOVAL

Detach to remove it from the Front Assy.

Make sure all remaining adhesive residue have been removed!



INSTALLATION

Prepare a new Sheet WR Mic.

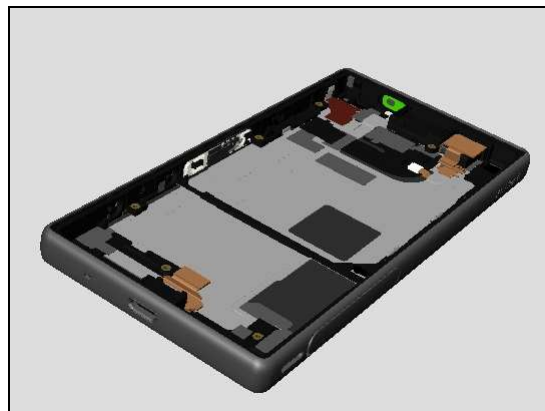
Press along with flat tip of Nylon Pointer at approximate 30N for 5 seconds to make it securely attached.

Replacement: Sheet WR Mic

Follow the 4.21 Removal instructions!

Follow previous steps to replace the other Sheet WR Mic in the 2nd Mic hole.

Follow the 4.21 Installation instructions!



Replacement

4.48 Sheet WR Test

Follow the 3.1 – 3.2 Disassembly instructions!

Prepare the new Sheet WR Test.

Follow the 5.13 – 5.14 Reassembly instructions!

REMOVAL

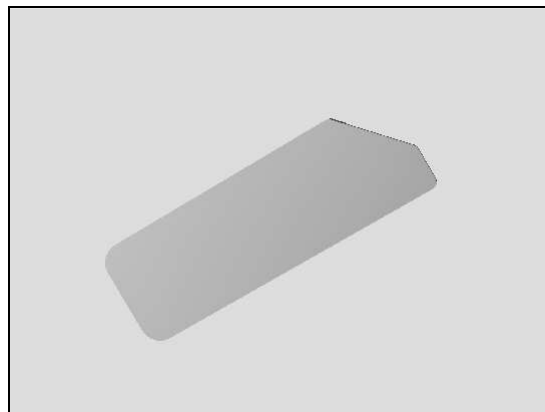
Detach to remove it.

Make sure all remaining adhesive residue have been removed!

INSTALLATION

Attach a new Sheet WR Test as picture shown and

Press along with Thumb at approximate 30N for 5 seconds to make it securely attached.



Replacement

4.49 Tray Label

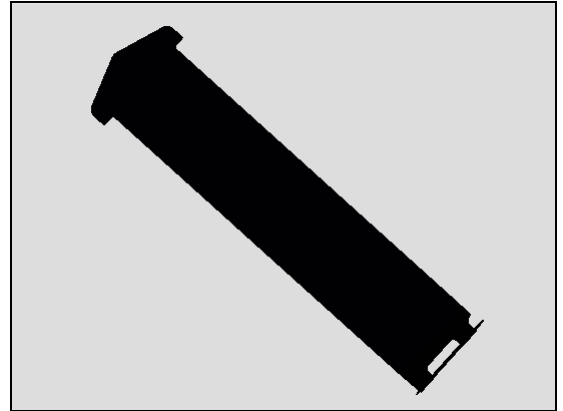
Follow the 3.1 – 3.3 Disassembly instructions!

Follow the 4.52 Removal instructions!

Prepare the new Tray Label.

Follow the 4.52 Installation instructions!

Follow the 5.12 – 5.14 Reassembly instructions!



Replacement

4.50 WR Key Camera Sub Assy

Follow the 3.1 – 3.10 Disassembly instructions!

Follow the 4.21 Removal instructions!

Prepare the new WR Key Camera Sub Assy.

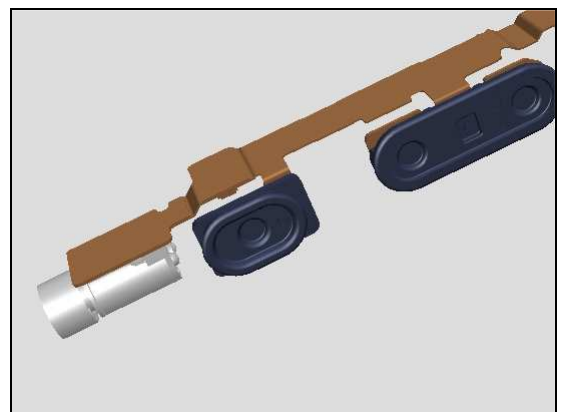
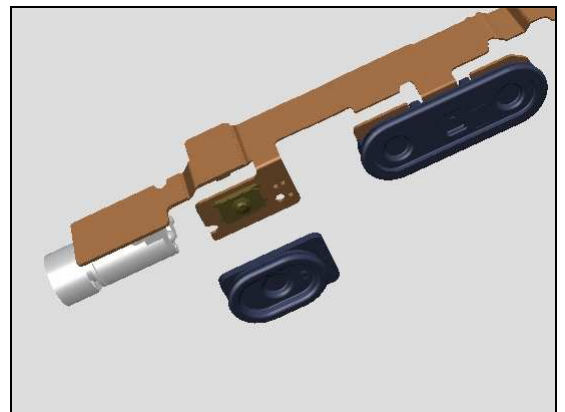
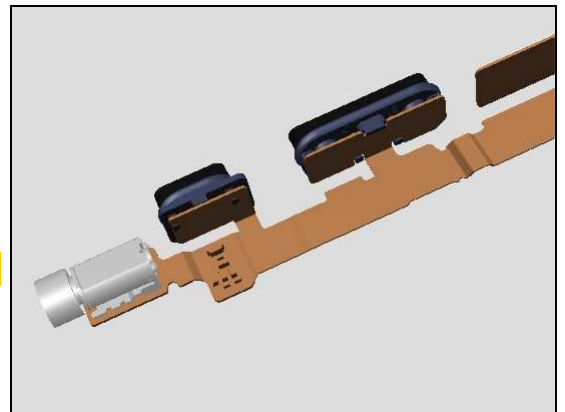
Follow the 4.21 Installation instructions!

Follow the 5.4 – 5.14 Reassembly instructions!

REMOVAL

Insert and slide along both side to remove it from the FPC Camera Key with the Front Opening Tool.

Do not insert too deep!



INSTALLATION

Prepare a new WR Key Camera Sub Assy in place.

Press to snap and attach the WR Key Camera Sub Assy onto the FPC Camera Key.

Replacement

4.51 WR Key Volume Sub Assy

Follow the 3.1 – 3.10 Disassembly instructions!

Follow the 4.21 Removal instructions!

Prepare the new WR Key Volume Sub Assy.

Follow the 4.21 Installation instructions!

Follow the 5.4 – 5.14 Reassembly instructions!

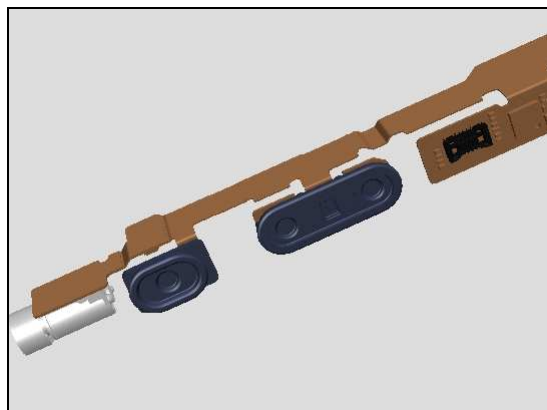
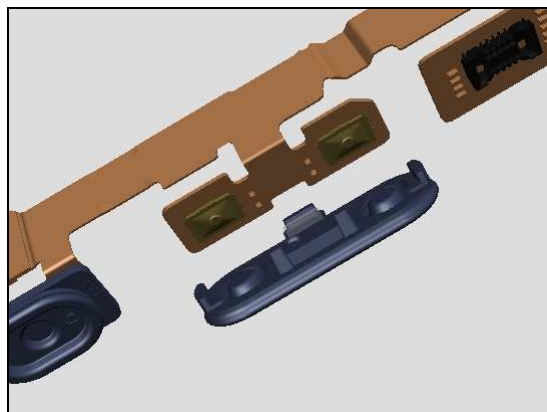
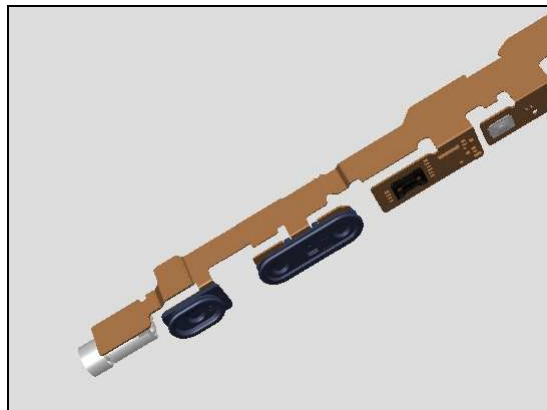
REMOVAL

Insert the Front Opening Tool from the position as shown in the picture to release and remove it from the FPC Volume Key gently.

INSTALLATION

Prepare a new WR Key Camera Sub Assy in place.

Press to snap and attach the WR Key Volume Sub Assy onto the FPC Volume Key.



Replacement

4.52 Label 0.0 mm x 0.0 mm

Prepare a new Label 0.0 mm x 0.0 mm.

REMOVAL

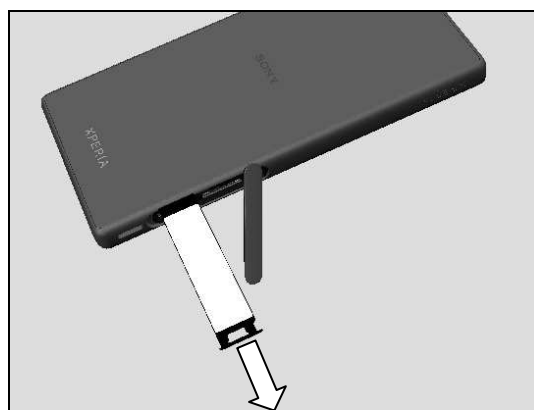
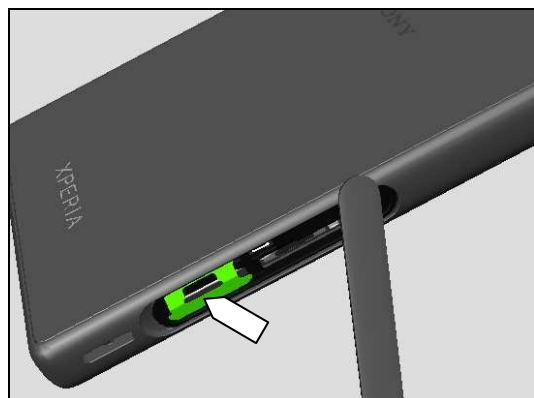
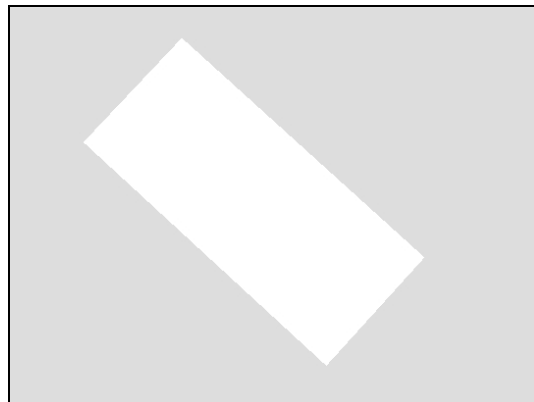
Open the Cap SIM/SD.
Identify the release rib for pulling.

Pull out the Tray Label with fingers.

Read the front side of the old label content and/or write the information into the 'Label Print Solution' program before removal.

Carefully remove the Core Unit Label by using the Flex Film Assembly Tool.

Scrap! Not to be reused!



Replacement:

INSTALLATION

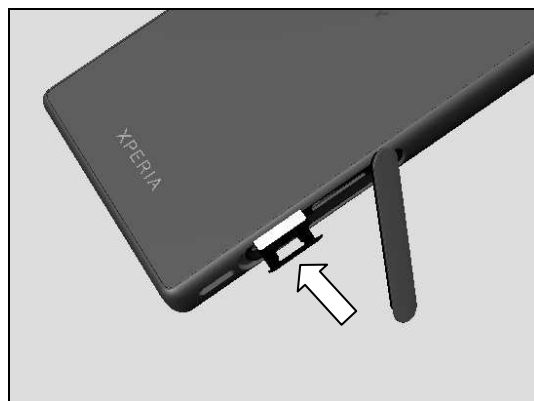
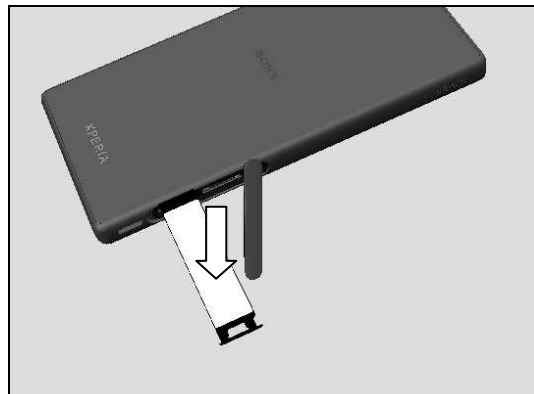
Check that the label format is properly loaded in the Zebra printer and write a new Label using the 'Label Print Solution' software.

Attach a new front side of the Core Unit Label in its proper position as shown in picture.

Push the Core Unit Label back into the slot

Close the Cap SIM/SD as sequence below:

1. Center
2. Bottom side
3. Top Side



Replacement

4.53 Board Swap – Replacement

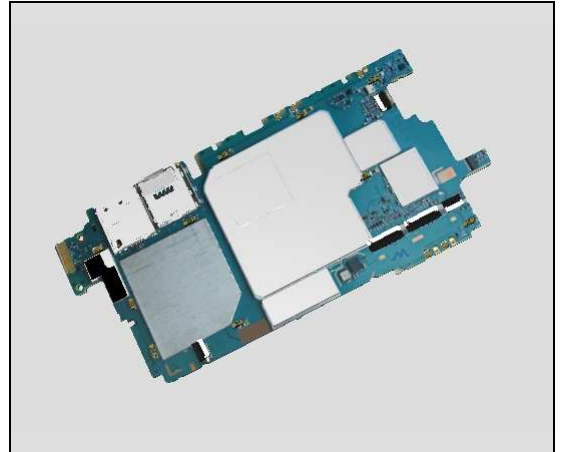
Follow the 3.1 – 3.14 Disassembly instructions!

Replace the Swap Board.

Follow 4.23, 4.43 – 4.46 Installation instruction!

Follow the 5.1 – 5.14 Reassembly instructions!

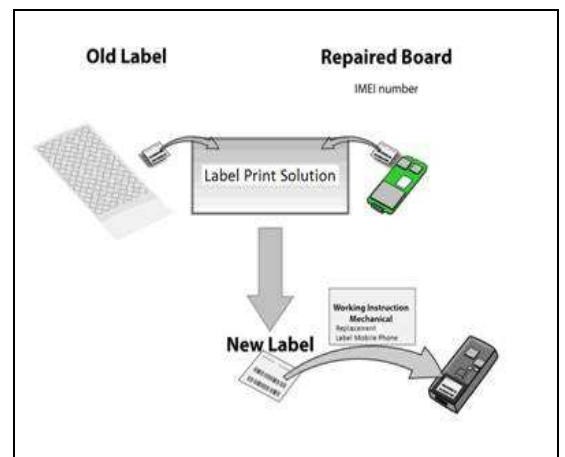
Proximity, Noise Cancelling, Gyroscope and Accelerometer Calibration and Color ID Flashing must be performed for all replaced units; 1289-2983 Trouble Shooting Application – mechanical.



4.54 Board Swap – Change Label

CHANGE LABEL

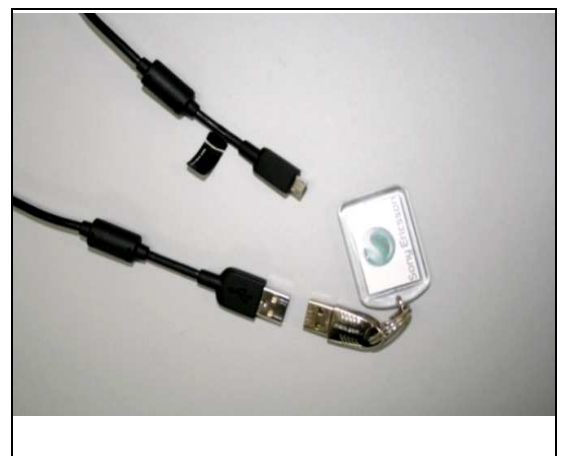
Follow the instructions in the Generic Repair Manual – Build swap for change of label.



4.55 Board Swap – Customize of Software

CUSTOMIZE OF SOFTWARE

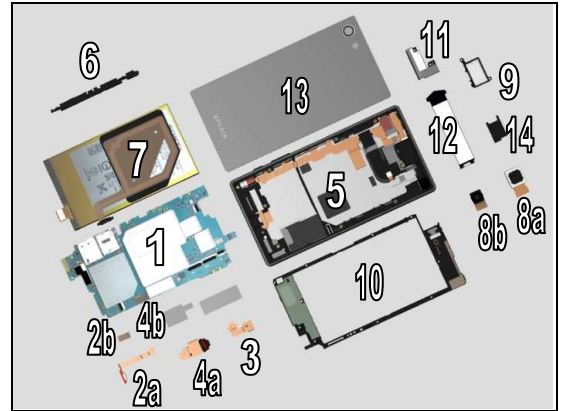
Follow the instructions in the Generic Repair Manual – Build swap for customization of the software.



5 Reassembly

The reassembly is done in the following order:

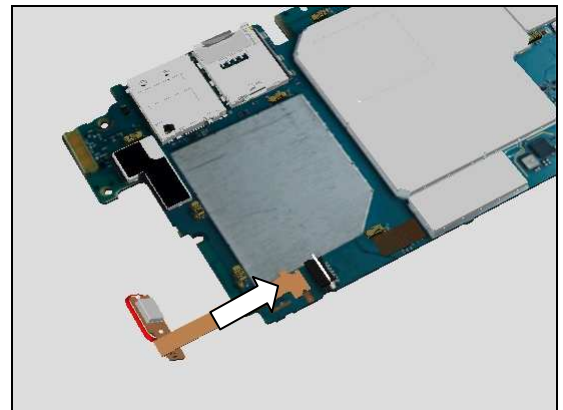
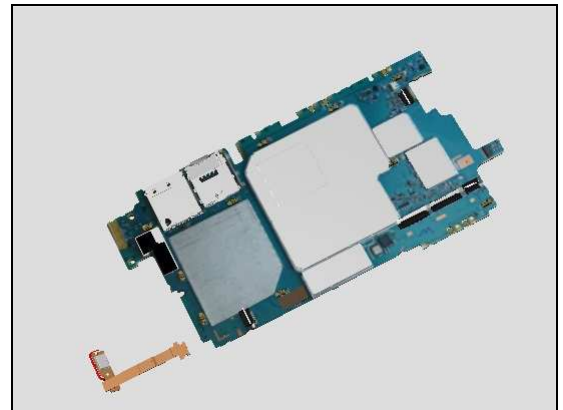
1. Main PBA Assy
2. FPC Assembly Bottom (a) & Sheet Insulative NFC (b)
3. FPC Assembly Flash
4. FPC Assembly JK (a) & Sheet Insulative DTV Tuner (b)
5. Front Assy
6. Carrier Holder Key
7. Battery Assy
8. Main Camera (a) & Chat Camera (b)
9. Speaker holder assy
10. Cover Rear Sub Assy
11. Ant Main Flex Gina
12. Label Tray
13. Panel Back
14. SIM Tray



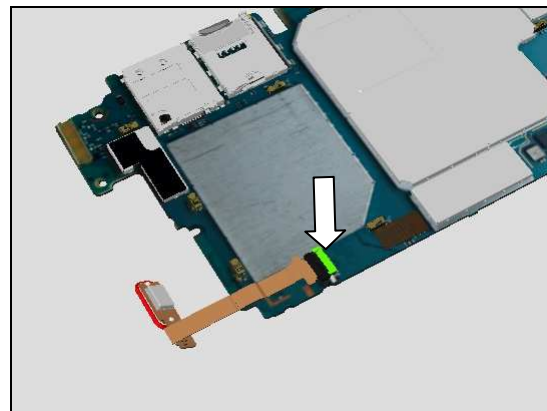
5.1 Main PBA Assy & FPC Assembly Bottom

Prepare the Main PBA Assy and FPC Assembly Bottom in place

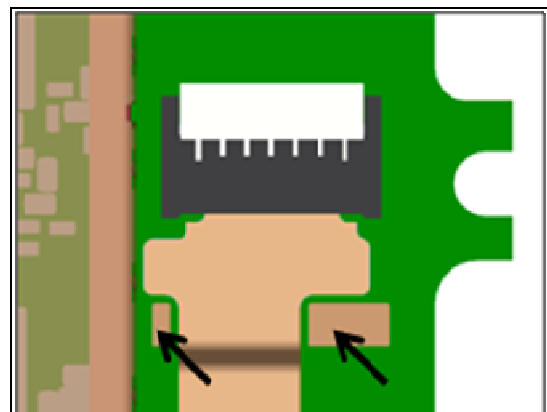
Insert the FPC Assembly Bottom into the ZIF connector.



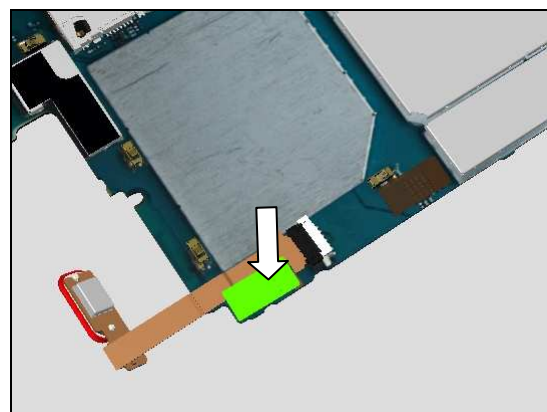
Lock it.



Check the FPC assembled position as picture shown.

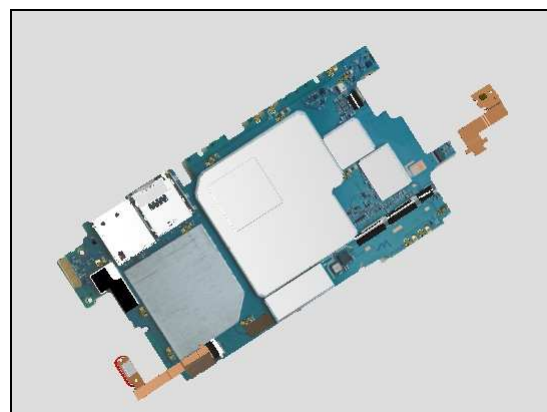


Attach a new Sheet Insulative NFC along the edge of the Main PBA and press along to make it securely attached.

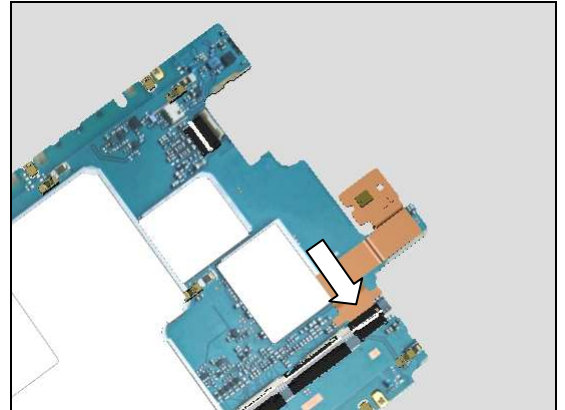


5.2 FPC Assembly Flash

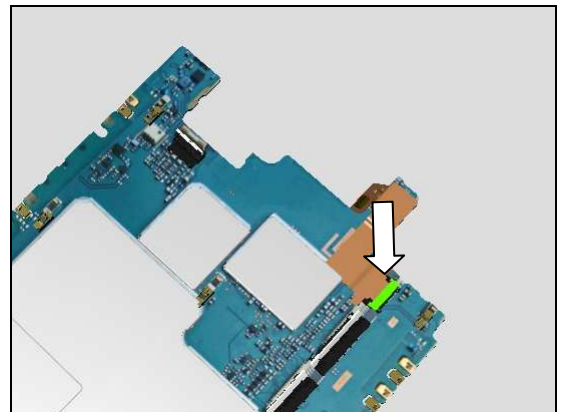
Prepare FPC Assembly Flash in place.



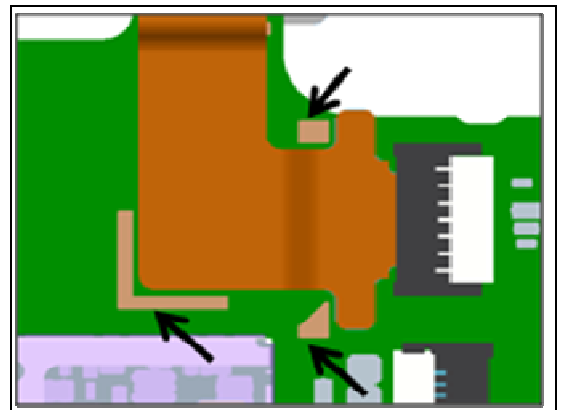
Insert the FPC into the ZIF connector slot.



Lock it.

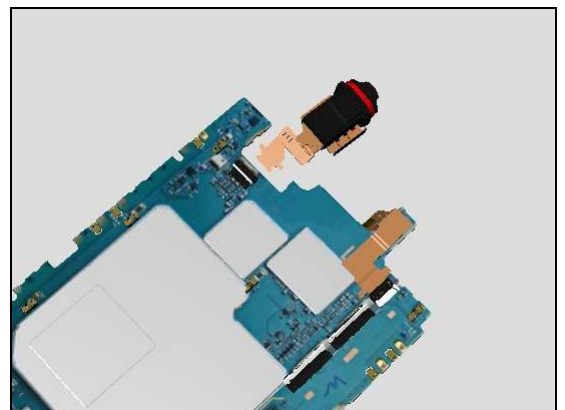


Check the FPC assembled position as picture shown.



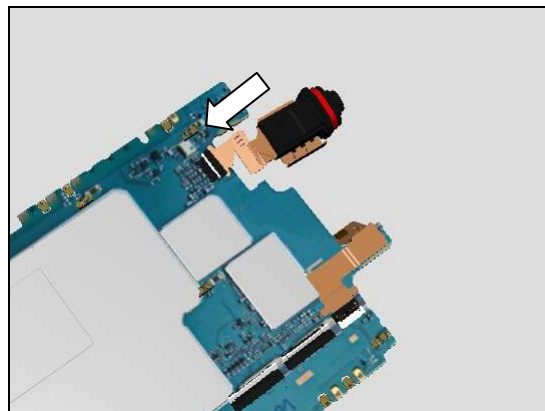
5.3 FPC Assembly JK

Prepare FPC Assembly JK in place.

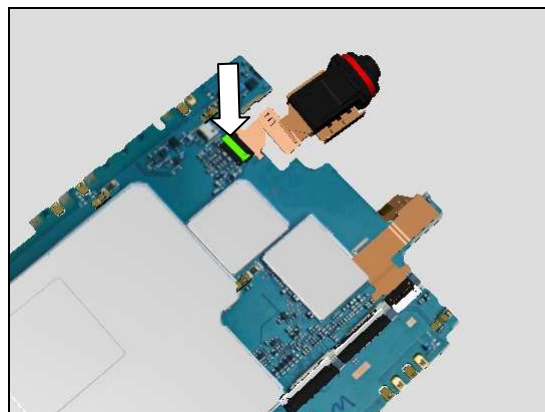


Reassembly

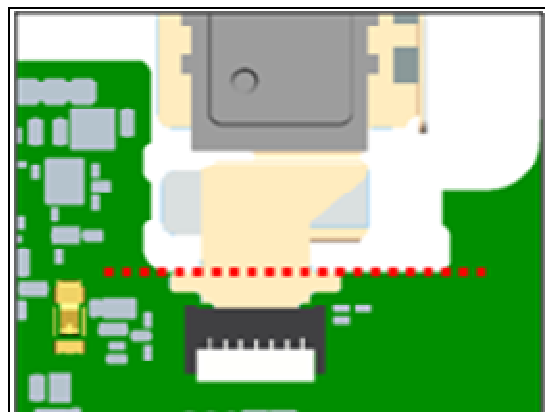
Insert the FPC into the ZIF connector slot.



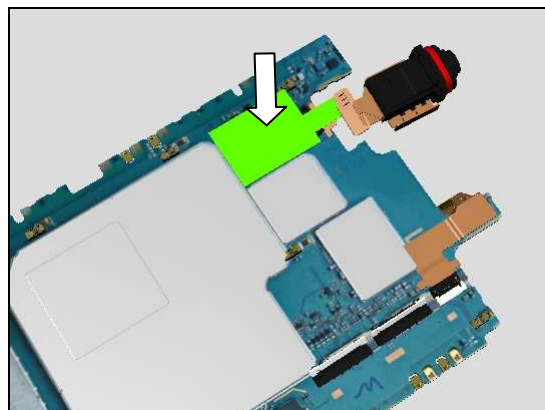
Lock it.



Wings of FPC Assembly JK cannot over the edge of the Main PBA as picture shown.



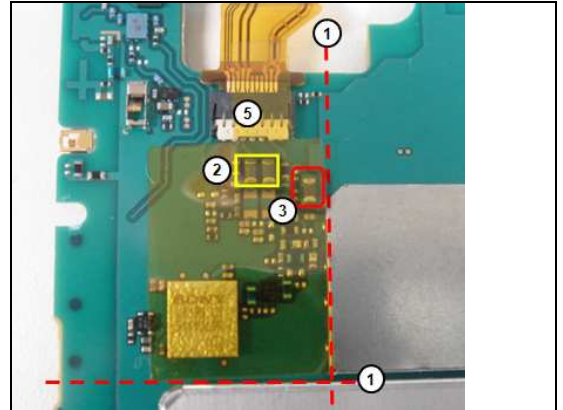
Attach a new Sheet Insulative DTV Tuner on the Main PBA and press along to make it securely attached.



Reassembly

Check the FPC assembled position as instruction below:

- ① Align by Shield Can outline.
- ② Cover Yellow area chips completely.
- ③ Cover Red area chip.
- ④ Do not cover the shield cans.
- ⑤ The sheet should cover the ZIF connector.



5.4 Front Assy

Put the Main PBA Assy on the PBA Assembly Fixture with correct direction.



Open the vacuum to fix the Main PBA if you have (Optional).



Place the Front Assy as shown position on the PBA Assembly Fixture.



Reassembly

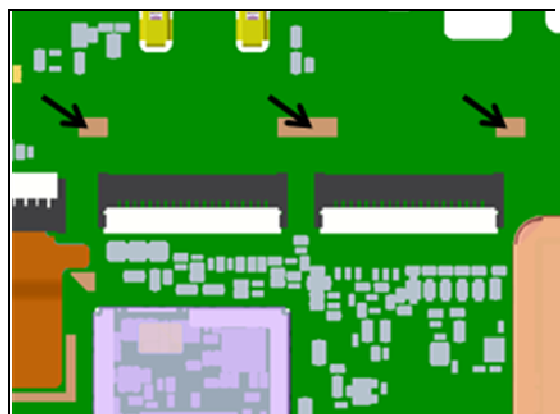
Insert and lock the FPC Assembly Key to the related ZIF connector as shown.



Insert and lock the Display FPC to the related ZIF connector as shown.



Use the marks shown on the picture as guides lines for the FPC wings when inserting the FPC Assembly Key and Display FPC.

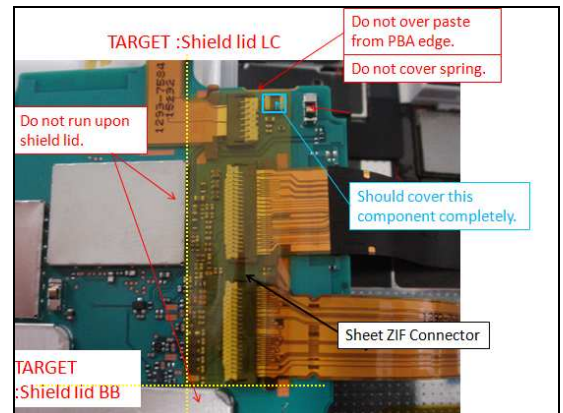


Attach a new Sheet ZIF Connector on the ZIF connectors and press gently to make it securely attached.

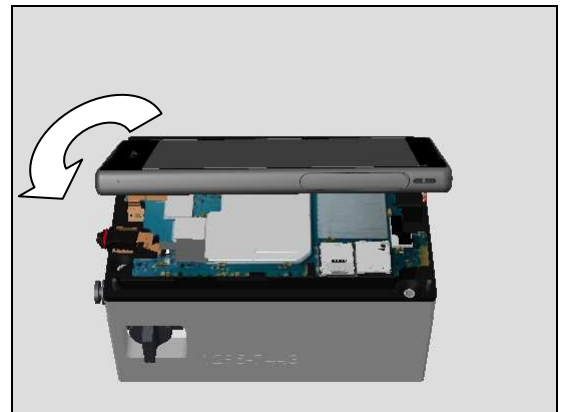


Reassembly

Inspect the Sheet ZIF Connector position as picture shown.



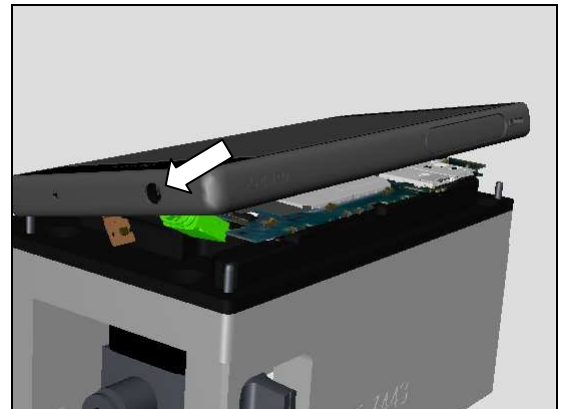
Move the Front Assy gently from the fixture cavity to the position above the Main PBA Assy as shown in the picture.



Turn the Front Assy at approximate 15° above the Main PBA.

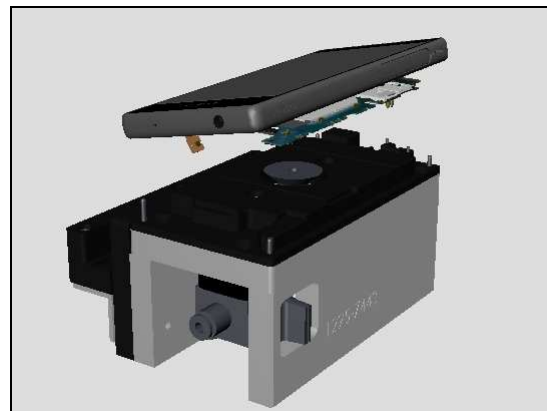


Insert the Audio Jack head into the Audio Jack hole.

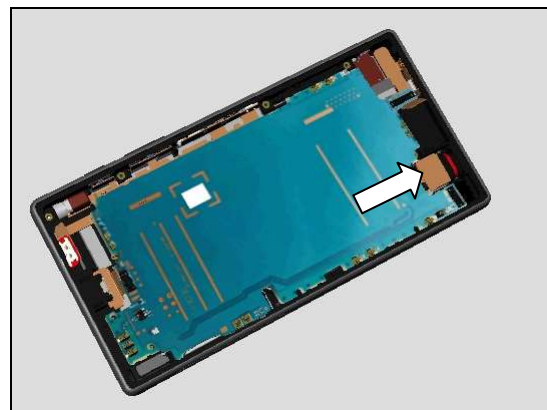


Reassembly

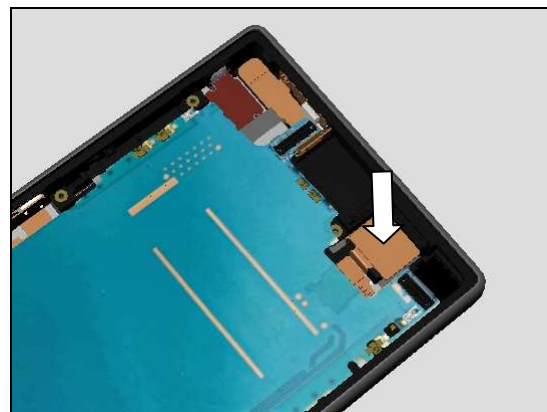
Remove the unit from the PBA Assembly Fixture.



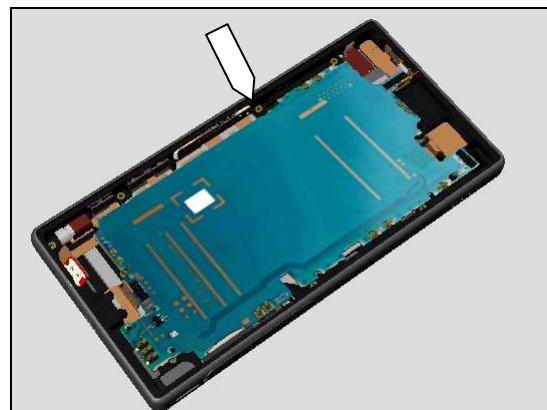
Push the Audio Jack head horizontally into the hole as arrow shown in the picture. Stop when the red ring is fully inserted.



Press the surface vertically with thumb for 5 seconds.

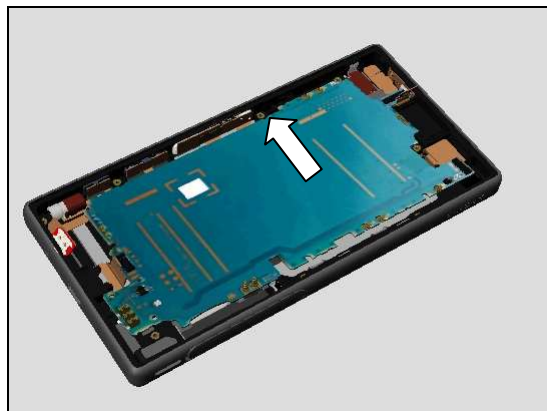


There is one snap hook on the Front Assy secures Main PBA as shown position.

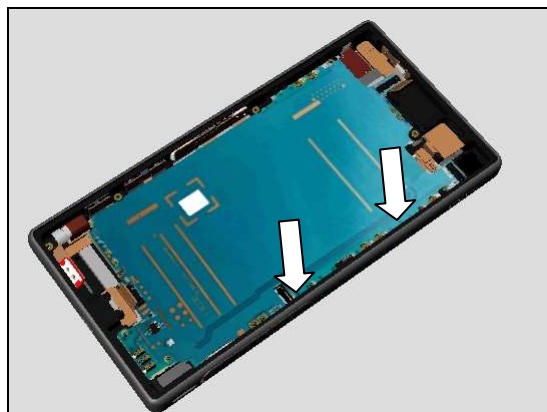


Reassembly

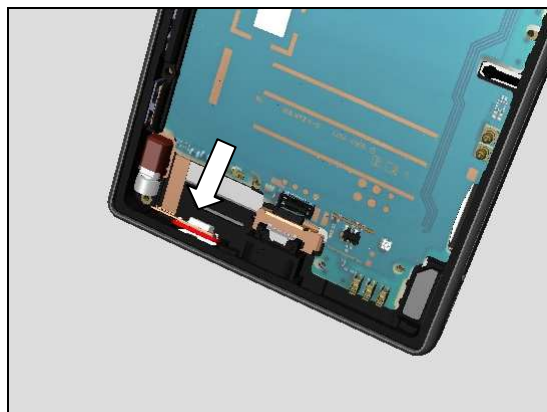
Insert the left side underneath the snap hook with an angle.



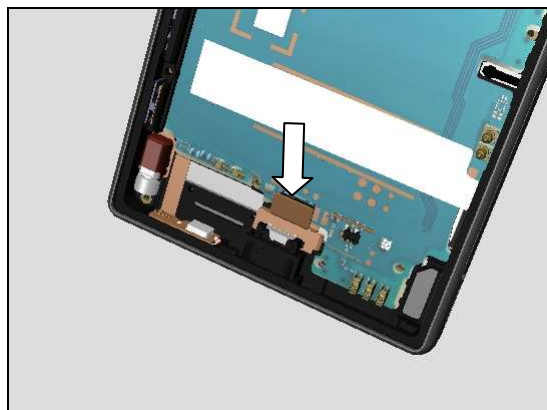
Press to snap the right side.



Press the 1st Mic of FPC Assembly Bottom into the cavity until the red ring is fully inserted.



Press to snap the BtB connector of USB FPC.



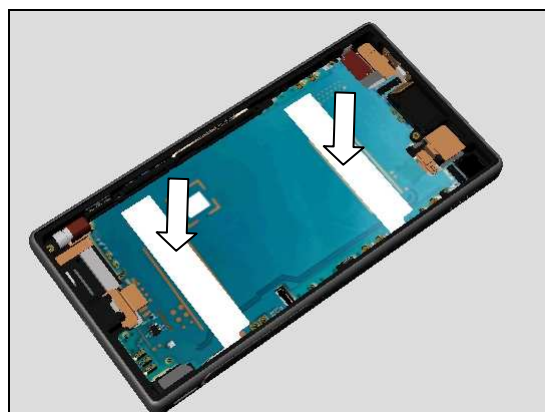
5.5 Carrier Holder Key

Put the Carrier Holder Key into the cavity with right direction and press to snap it.

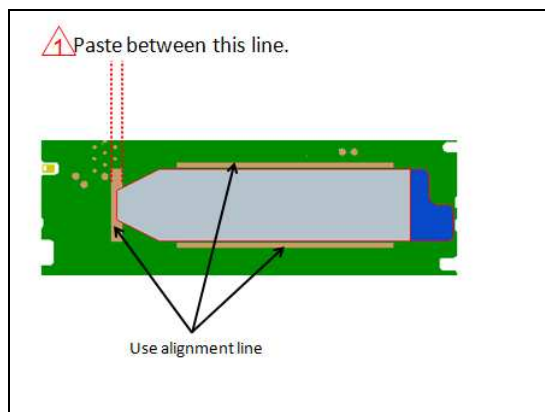


5.6 Battery

Attach two pieces new Foil Adhesive Double Side Battery aligning with guiding lines.



Inspect the Foil Adhesive Double Side Battery position



Place the Cover Rear Sub Assy Tool as guiding frame for Battery.

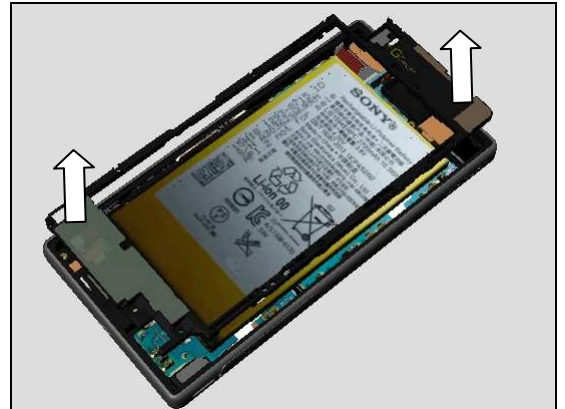


Reassembly

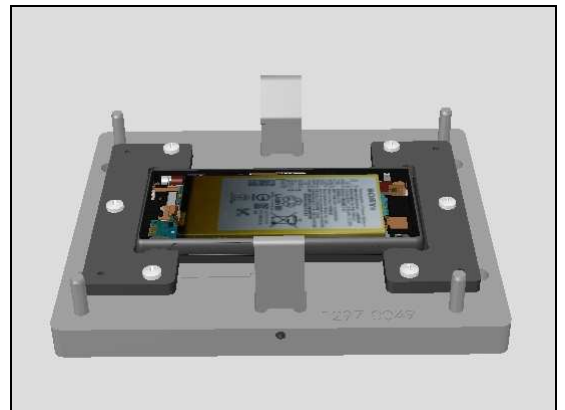
Put a new Battery into cavity in the Cover Rear Sub Assy.



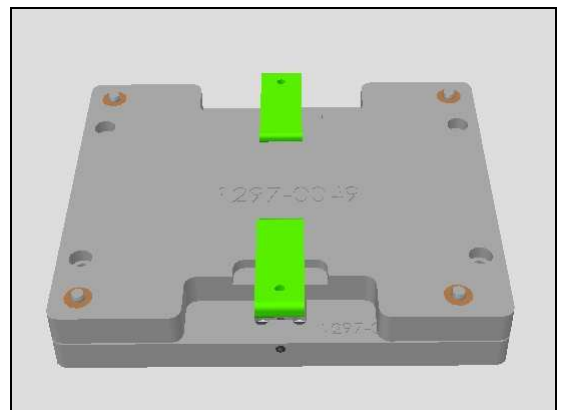
Remove the Cover Rear Sub Assy Tool.



Put the Unit in the Battery Press Fixture.



Close the fixture and press for 5 seconds.



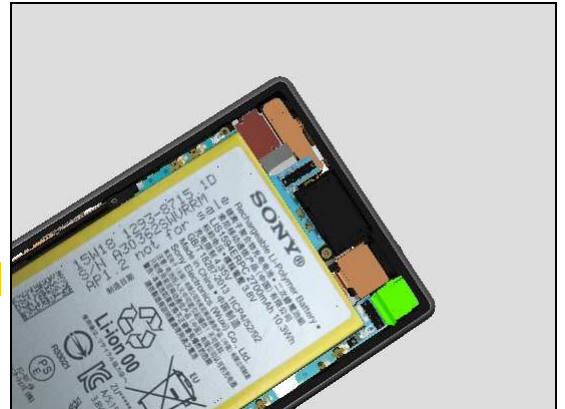
Release the Unit from the Fixture.



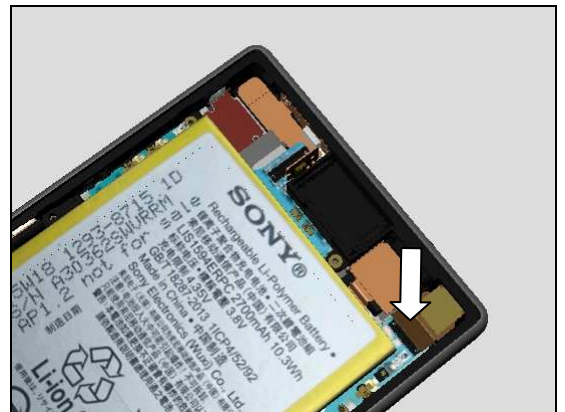
5.7 Chat Camera

Put the Chat Camera into its Cavity and press to secure the position.

Do not touch the lens!



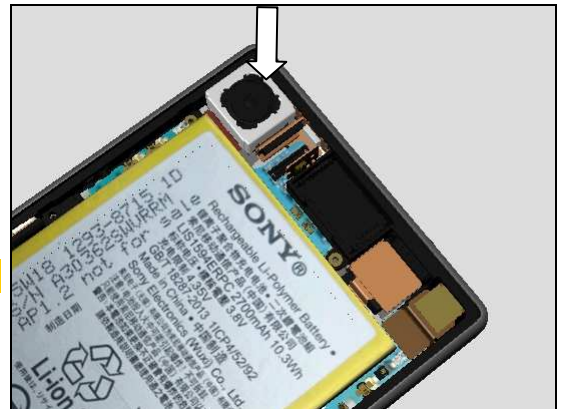
Press to connect the BtB connector.



5.8 Main Camera

Put the Main Camera into its Cavity and press to secure the position.

Do not touch the lens!



Press to connect the BtB connector.



5.9 Speaker holder Assy

Place the Speaker holder Assy into the cavity with good alignment.

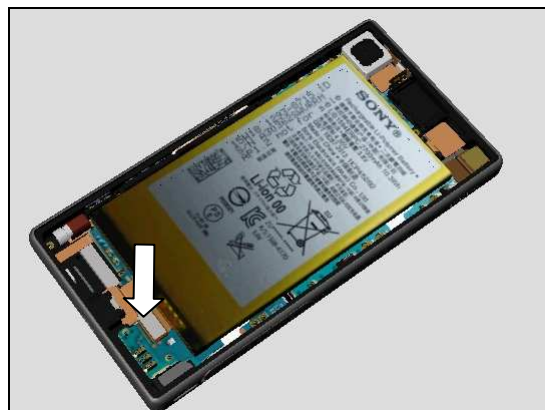


Press to secure its position.



5.10 Cover Rear Sub Assy

Press to connect the BtB connector of Battery.



Reassembly

Place the Cover Rear Sub Assy in position.

Make sure the FPC Assembly Flash pass through the hole of Cover Rear Sub Assy



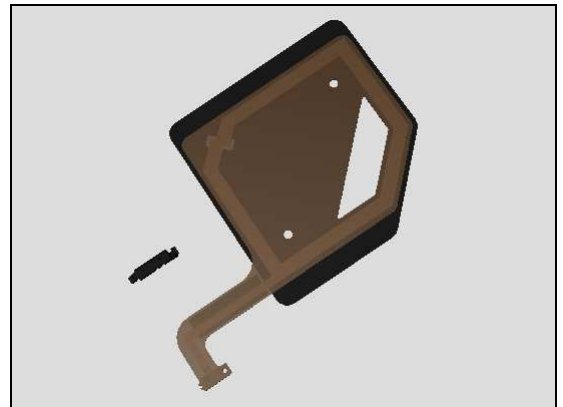
Replace a new Foil Adhesive Double Side 0.0 mmFlash FP following 4.22 Removal and Installation instruction.



Turn the Flash FPC to horizontal position and press to make it securely attached.

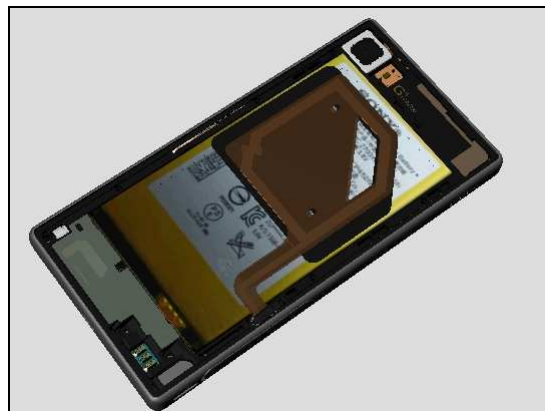


Prepare a new FPC Assembly NFC antenna and a new Carrier Holder NFC Antenna.



Reassembly

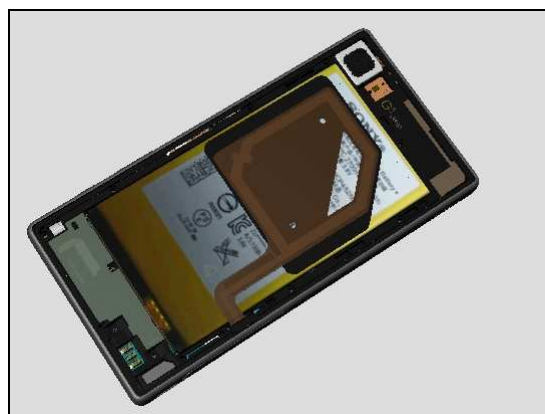
Follow 4.33 Installation to assemble the new FPC Assembly NFC antenna and Carrier Holder NFC Antenna.



Connect the connector of FPC Assembly NFC antenna as shown sequence shown in the picture.



Lay flat the FPC Assembly NFC antenna with alignment of Battery edge.

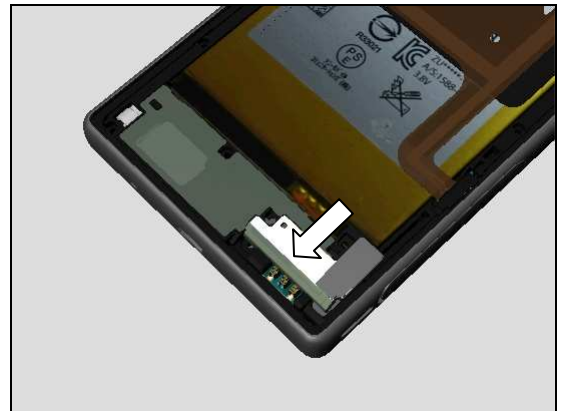


Press long gently on the FPC Assembly NFC antenna to make it securely attached.



5.11 Ant Main Flex Gina

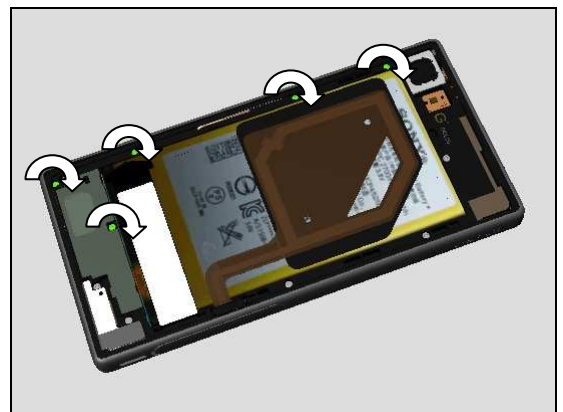
Insert the Ant Main Flex Gina into the cavity as shown.



Apply $6 \pm 1\%$ Ncm torque when tightening five new Screw M1.2*4.2 with Bits JCIS No.0.



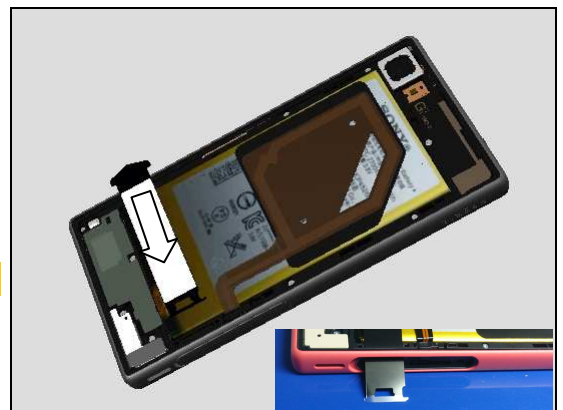
Apply $5 \pm 1\%$ Ncm torque when tightening five new Screw M1.2*4.2 with Bits JCIS No.0.



5.12 Label Tray

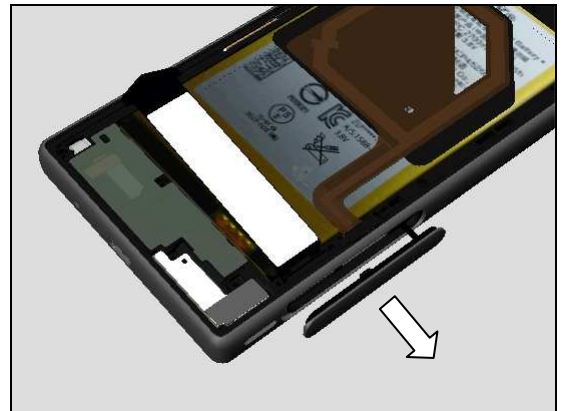
Prepare the Label Tray in place.

Notice the direction as picture shown!

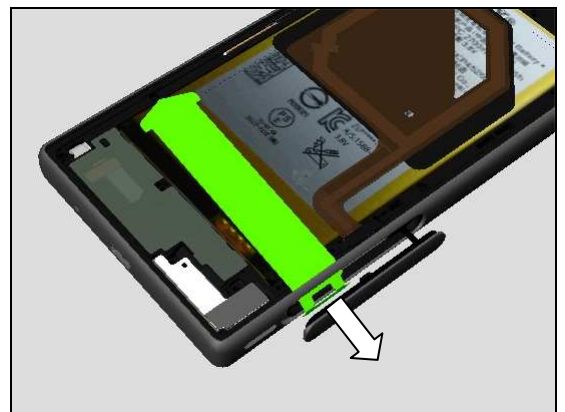


Reassembly

Open the Cap SIM/SD.



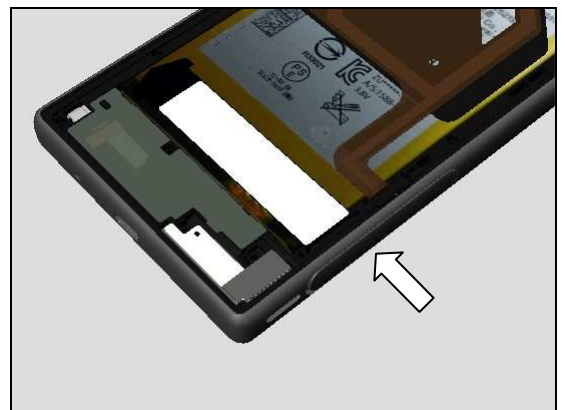
Insert the Label Tray through the hole.



Bend the tray as picture shown.



Close the Cap SIM/SD.



5.13 Panel Back

Follow the 4.xx removal and installation instruction to replace a new Foil Adhesive WR Panel Back.

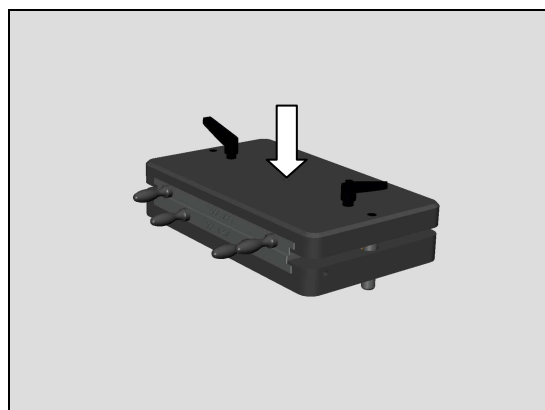
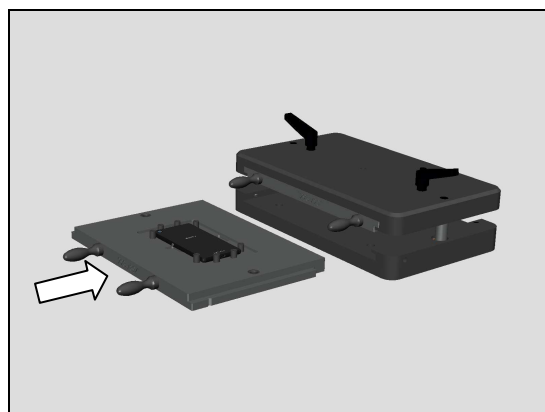
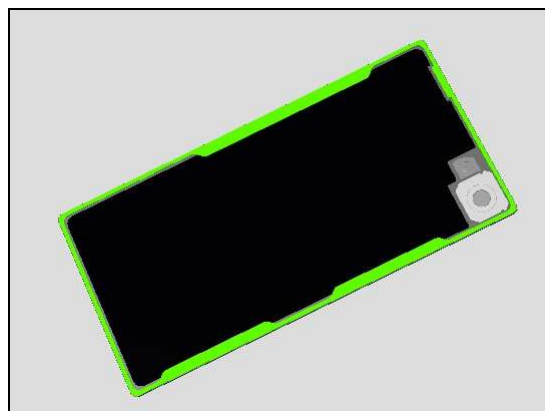
Place the Panel Back on the Front Assy with good alignment.

Upper inlay = Rear Panel Press Top Inlay

Lower inlay = Bottom Press Inlay

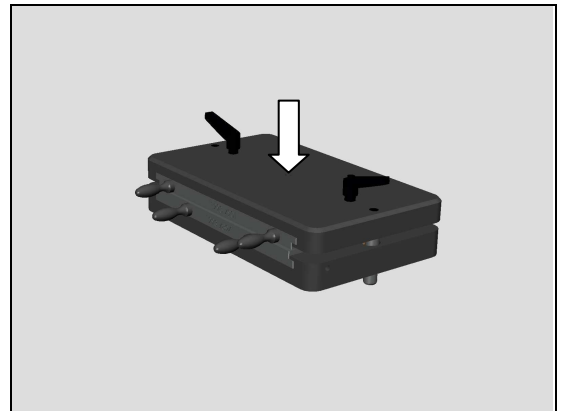
Place the phone in the Bottom Press Inlay and follow the instruction in 1003-9107 Tool Catalogue – mechanical and document Toothed Rack Press Instruction for use.

Press it with a pressure value of $394 \pm 50\text{N}$ for 10 ± 1 seconds.



Reassembly

Press it again with a pressure value of $394 \pm 50\text{N}$ for 5 ± 1 seconds.



5.14 SIM Tray

Open the Cap SIM/SD.



Insert the SIM Tray with fingers.



Close the Cap SIM/SD as sequence below:

1. Center
2. Bottom side
3. Top Side

Proximity, Gyroscope, Accelerometer, Noise Cancelling Calibration and Color ID Flashing Tool Calibration must be performed after reassembly!

For Calibration, refer to Sony Mobile Repair Application 1289-2983!



6 Revision History

Rev.	Date	Changes / Comments
1	2015-Sep-07	Release
2	2015-Sep-21	Add Cover Rear Sub Assy Tool / FPC Assembly NFC cannot be reused